



BASKETBALL

7 NCAA TOURNAMENT APPEARANCES | 1997 | 1998 | 1999 | 2000 | 2003 | 2004 | 2005

Daniel Berk

Assistant Director of Athletics Communications

1 National Championship Drive, McKale 106, Tucson, AZ

O: (520) 621-1814 | C: (314) 363-5842

dberk@arizona.edu | www.ArizonaWildcats.com

Twitter: @ArizonaWBBall | Facebook.com/ArizonaWomensBasketball

SCHEDULE/RESULTS

NOVEMBER

10	E. NEW MEXICO (EX)	W, 71-37
14	at Toledo	W, 62-59
18	HOWARD	W, 65-28
21	at San Diego	L, 59-54
23	KANSAS	W, 67-52
27	North Texas	W, 51-44

DECEMBER

2	NEW MEXICO ST.	W, 68-64
5	PACIFIC	W, 69-56
10	LOUISIANA TECH	W, 77-67
19	SMU %	L, 58-46
20	Florida Gulf Coast %	L, 57-55
21	Gardner-Webb %	W, 79-60
29	GEORGE MASON	W, 68-60 (OT)

JANUARY

2	11 STANFORD**	L, 59-34
4	21 CALIFORNIA**	W, 57-52
8	at Washington State*	L, 67-46
10	at Washington**	L, 63-47
15	UTAH*	L, 60-55
17	COLORADO**	W, 63-52
22	at 8 Arizona State**	L, 61-49
24	8 ARIZONA STATE**	L, 62-47
29	at 9 Oregon State**	L, 71-43
31	at Oregon**	L, 76-54

FEBRUARY

5	USC**	L, 67-57
7	14 UCLA*	L, 73-39
12	at 13 Stanford**	8:30 p.m.
14	at California**	1 p.m.
19	WASHINGTON*	7 p.m.
21	WASHINGTON STATE*	1 p.m.
26	at 14 UCLA**	9 p.m.
28	at USC*	3 p.m.

MARCH

3-6 Pac-12 Tournament TBA

(EX)- Exhibition contest

% - Puerto Rico Classic

* - Pac-12 Conference game

#- Game to be televised on Pac-12 Networks

All times are local Arizona time and subject to change

Home games, in **BOLD**

GAME AT A GLANCE

DATE: February 12, 2016

VENUE: Maples Pavilion

CAPACITY: 7,233

SERIES: Stanford leads 61-13

LAST MEETING: 1/2/16: Stanford 59, Arizona 34

RADIO: Arizona IMG Sports Network/
KTUC AM 1400 (Derrick Palmer)

TV: Pac-12 Networks

LIVE STATS: gostanford.com

TWITTER: @ArizonaWBBall

FACEBOOK: [Facebook.com/ArizonaWomensBasketball](https://www.facebook.com/ArizonaWomensBasketball)

INSTAGRAM: @arizonawbball



**ARIZONA
WILDCATS**

Record: 11-13 (2-9 Pac-12)

Ranking (AP/Coaches): -/-

Coach: Niya Butts

Alma Mater: Tennessee '00

Career Record/Yrs: 100-141/8th

School Record/Yrs: Same

'14-15 Record: 10-20 (3-15 Pac-12)

Last Game: UCLA 73, Arizona 39



**STANFORD
CARDINAL**

Record: 19-5 (9-3 Pac-12)

Ranking (AP/Coaches): 13/14

Coach: Tara VanDerveer

Alma Mater: Indiana, '75

Career Record: 972-222/36th

School Record/Yrs: 820-171/29th

'14-15 Record: 26-10 (13-5 Pac-12)

Last Game: Stanford 60, California 55

QUICK NOTES

- ▶ The Arizona Wildcats will travel to the Bay Area for their second-to-last road trip of the season. The Wildcats will open with No. 13 Stanford on Friday and close the trip with a Sunday matchup with Cal.
- ▶ The Cardinal topped the Wildcats in the previous matchup this season. The Wildcats held Stanford to just 22 percent shooting in the second half, however. The Wildcats also notched nine steals against the Cardinal in the matchup.
- ▶ The game against Stanford will mark the fifth time in the last seven games that the Wildcats will face a ranked opponent. All of the teams have been ranked No. 14 or higher. Stanford enters Friday night's matchup ranked No. 13 in the AP Top 25. Arizona also faced Arizona State (No. 10) twice, along with No. 8 Oregon State once and No. 14 UCLA once.
- ▶ Arizona enters Sunday's game against UCLA shooting .321 from 3-point range. Taryn Griffey (29) and Malena Washington (30) lead the Wildcats in 3-pointers made. The Wildcats shot .241 from deep last season and Griffey and Washington have already passed the team leader from a year ago. As a team, the Wildcats are 89-277 from deep this season through 24 games. Last year, the Wildcats were 67-278 total in 30 games. The Wildcats attempted just one 3-pointer against Colorado, instead scoring 34 points in the paint.
- ▶ JaLea Bennett and Keyahndra Cannon enter Friday's game as the only two Wildcats to have started every game this season. Bennett is averaging 5.5 points per game, while Cannon, the lone senior, has been a reliable force on the defensive end.

LAST GAME'S STARTING 5

No.	Name	Position	Ht.	Class-Exp.	Points	Rebounds	Assists	Steals	Minutes
33	JaLea Bennett (24)	G	6-0	So.-1L	5.5	2.4	1.1	0.8	21.3
14	Malena Washington (9)	G	5-6	Jr.-TR	10.8	1.9	2.8	0.8	24.4
15	Keyahndra Cannon (24)	G	5-9	Sr.-3L	4.2	2.6	1.2	0.7	22.5
0	Breanna Workman (18)	F	6-3	Jr.-2L	6.3	4.5	1.4	0.8	25.1
24	LaBrittney Jones (13)	F	6-1	Jr.-2L	12.0	5.5	1.1	1.3	27.8

() starts this season

2 MORE TO WATCH



LAUREN EVANS, GUARD, PHOENIX

The junior transfer from Virginia Tech has been a reliable force off the bench for the Wildcats this season. Evans has played in all 24 games and is averaging 20.3 minutes per game and is shooting 43 percent from the floor. She's averaging 3.4 points per game and 3.0 rebounds a contest to go with a team-high 21 steals. In the team's final non-conference game of the season against George Mason, Evans had a career best 10 points.



DESTINY GRAHAM, FORWARD, SAN FRANCISCO, CALIF.

The San Francisco product has played in all 24 games for the Wildcats this season and has five starts to her credit. She's averaging 14.8 minutes per game and 3.2 points a contest. She's also pulling down three rebounds per game. Graham had six points and four rebounds versus Utah and four points and two rebounds against Colorado. The freshman had a career-high 14 points earlier this year in her first career start against George Mason.

ROSTER INFORMATION

NUMERICAL

No.	Name	Pos.	Ht.	Cl.-Exp.	Hometown/High School (Last School)
0	Breanna Workman	F	6-1	Jr.-2L	Las Vegas, Nev. (Centennial HS)
3	Taryn Griffey	G	5-7	R-Fr.-HS	Seattle, Wash. (Dr. Phillips HS)
10	Lauren Evans	G	5-11	R-Jr.-TR	Phoenix, Ariz./Hamilton HS (Virginia Tech)
13	Eugenie Simonet-Keller	C	6-8	Fr. - HS	La Biot, France (IMG Academy)
14	Malena Washington	G	5-6	Jr.-1L	Beaumont, Texas/ Central HS (Tyler JC)
15	Keyahndra Cannon	G	5-9	Sr.-3L	San Diego, Calif. (Mission Bay HS)
20	Farrin Bell	G	6-0	R-Jr.-1L	Richardson, Texas/Richardson HS (SMU)
21	Destiny Graham	F	6-3	Fr. HS	San Francisco, Calif. (Eastside College Prep)
23	Michal Miller	G	5-7	Fr.- HS	Michigan City, Ind. (Michigan City HS)
24	LaBrittney Jones	F	6-1	Jr.-2L	Cedar Hill, Texas (Cedar Hill HS)
31	Dejza James	F	6-1	Jr.-2L	Elk Grove, Calif. (Pleasant Grove HS)
33	JaLea Bennett	G	6-0	So.-1L	Grand Prairie, Texas (Mansfield Timberview HS)
42	A'Shanti Coleman	F	6-2	Fr.-HS	San Francisco, Calif. (Sacred Heart Cathedral Prep)

COACHING STAFF

Head Coach: Niya Butts (Tennessee, '00), 8th Year

Assistant Coach: E.C. Hill (Northern Illinois, '95), 5th Year

Asst. Coach/ Recruiting Coordinator: Calamity McEntire (Tennessee, '03), 4th Year

Assistant Coach: Sean LeBeauf (Montevallo-Ala., '94), 3rd Year

SUPPORT STAFF

Director of Operations: Lisa Salgado

Assistant Director of Operations: Alli Gloyd

Video Coordinator: Daniel Boice

Athletic Trainer: Doug Contaoi

ALPHABETICAL ROSTER

No.	Name	Pos
20	Farrin Bell	G
33	JaLea Bennett	G
15	Keyahndra Cannon	G
42	A'Shanti Coleman	F
10	Lauren Evans	G
21	Destiny Graham	F
3	Taryn Griffey	G
31	Dejza James	F
24	LaBrittney Jones	F
23	Michal Miller	G
13	Eugenie Simonet-Keller	C
14	Malena Washington	G
0	Breanna Workman	F

PRONUNCIATIONS

Niya Butts	NIGH-ah
Sean LeBeauf	Leh-BUFF
Farrin Bell	FARE-in
JaLea Bennett	Juh-LEE-uh
Keyahndra Cannon	Key-ON-druh
Cherice Harris	Sher-EES
Dejza James	DAY-juh
Malena Washington	Muh-LEE-nuh
Breanna Workman	Bree-ANN-uh

ROSTER BREAKDOWN

By Height:

Eugenie Simonet-Keller	6-8
Destiny Graham	6-3
A'Shanti Coleman	6-2
LaBrittney Jones	6-1
Breanna Workman	6-1
Dejza James	6-1
Farrin Bell	6-0
JaLea Bennett	6-0
Lauren Evans	5-11
Keyahndra Cannon	5-9
Taryn Griffey	5-7
Michal Miller	5-7
Malena Washington	5-6

Returners (2014-15 stats):

LaBrittney Jones	9.0 ppg/5.7 rpg
Malena Washington	6.9 ppg/2.1 rpg
Keyahndra Cannon	5.5 ppg/ 2.3 rpg
JaLea Bennett	4.5 ppg/2.3 rpg
Breanna Workman	4.4 ppg/3.7 rpg
Dejza James	3.6 ppg/2.9 rpg
Farrin Bell	1.0 ppg/1.0 apg
Lauren Evans	DNP - TR
Taryn Griffey	DNP-injury

Newcomers:

Michal Miller	Fr./G/5-7
Eugenie Simonet-Keller	Fr./C/6-8
Destiny Graham	Fr./F/6-3
A'Shanti Coleman	Fr./F/6-2

By Position:

Guards	7
Forwards	5
Centers	1

By Class:

Freshmen	5
Sophomores	2
Juniors	6
Seniors	1

By State/Country:

California	4
Texas	4
Arizona	1
Indiana	1
Nevada	1
Washington	1
France	1

2015-16 ARIZONA WOMEN'S BASKETBALL RADIO/TV ROSTER



#0 BREANNA WORKMAN
F • 6-1 • Jr.-2L
Las Vegas, Nev.



#3 TARYN GRIFFEY
G • 5-7 • R-Fr.-HS
Seattle, Wash.



#10 LAUREN EVANS
G • 5-11 • R-Jr.-TR
Phoenix, Ariz.



#13 EUGENIE SIMONET-KELLER
C • 6-8 • Fr.-HS
La Biot, France



#14 MALENA WASHINGTON
G • 5-6 • Jr.-1L
Beaumont, Texas



#15 KEYAHNDRA CANNON
G • 5-9 • Sr.-3L
San Diego, Calif.



#20 FARRIN BELL
G • 6-0 • RSo.-TR
Richardson, Texas



#21 DESTINY GRAHAM
F • 6-3 • Fr.-HS
San Francisco, Calif.



#23 MICHAL MILLER
F • 5-7 • Fr.-HS
Michigan City, Ind.



#24 LABRITTNEY JONES
F • 6-1 • Jr.-2L
Cedar Hill, Texas



#31 DEJA JAMES
F • 6-1 • Jr.-2L
Elk Grove, Calif.



#33 JALEA BENNETT
G • 6-0 • So.-1L
Grand Praire, Texas



#42 A'SHANTI COLEMAN
F • 6-2 • Fr.-HS
San Francisco, Calif.



NIYA BUTTS
Head Coach
8th Season at Arizona



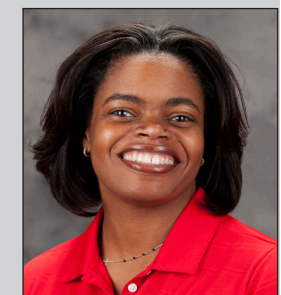
E.C. HILL
Assistant Coach
5th Season at Arizona



CALAMITY McENTIRE
Assistant Coach
4th Season at Arizona



SEAN LeBEAUF
Assistant Coach
3rd Season at Arizona



LISA SALGADO
Director of Operations
4th Season at Arizona

**MEDIA POLICIES AND SERVICES****ARIZONA ATHLETICS COMMUNICATIONS**

Office Phone (520) 621-4163
 Office Fax (520) 621-2681
 Press Row Phone (520) 621-5291
 Ticket Office (520)-621-CATS
 Web site www.ArizonaWildcats.com
 Mailing Address McKale Center, Rm 106
 1 National Championship Dr.,
 Tucson, AZ 85721

Daniel Berk, Assistant Director/WBB Contact
 Office Phone (520) 621-1814
 Mobile Phone (314) 363-5842
 E-mail dberk@arizona.edu

ATHLETICS COMMUNICATIONS OFFICE

- ▶ The University of Arizona Athletics Communications Office is located in Room 106 on the ground floor of the McKale Center
- ▶ The McKale Center is located at 1 National Championship Drive.

CREDENTIALS

- ▶ Requests for press, radio, television and photographer credentials should be emailed at least 48 hours in advance to Daniel Berk in the Athletics Media Relations Office at dberk@arizona.edu. Passes are available for working media only and are required for all games. Credentials may be picked up in the Athletic Communications Office on the day of the game or at the McKale Center Ticket Office beginning 90 minutes prior to tip-off. Media Credentials for away games will be administered through the home SID.

PRACTICES

- ▶ All local and visiting media are welcome to watch Arizona women's basketball practices, but must make prior arrangements through the Athletic Communications Office in order to attend. TV crews and photographers are welcome to shoot footage of practices, provided they stay outside the boundaries of the court. Please contact Daniel Berk about covering practices.
- ▶ All game day and road practices are closed.

INTERVIEWS

- ▶ All interviews with UA coaches, student-athletes and administrators MUST be coordinated through the Arizona Athletics Communications office.
- ▶ Arrangements to speak with a member of the women's basketball program should be made with Daniel Berk at least one day prior to the desired interview date. Players and coaches are generally available following practice.
- ▶ The locker rooms, training room and weight room inside McKale Center and Richard Jefferson Gymnasium are off-limits to reporters.
- ▶ On game days, no UA players will be available until the postgame media session.
- ▶ Postgame interviews after home games will be conducted in the interview room which is located in room 105 next to the Athletic Communications Office inside McKale Center. For post game interviews following road games contact Daniel Berk.

ACCESS TO WILDCATS INFORMATION

- ▶ **ArizonaWildcats.com** – The official website of University of Arizona athletics includes rosters, schedules, statistics, player profiles, press releases, game notes and more. The site is updated daily and also includes links to listen to UA athletics events live over the Internet.
- ▶ **E-Mail List** – Press releases, notes and statistics are e-mailed to a large contingent of media. To be added to the list please contact Daniel Berk. Notes packets will be available at least 24 hours prior to each game, and in many instances much earlier.

PAC-12.COM

- ▶ The league's official web site contains information on all 12 schools, including updated conference statistics, schedules and standings.

The 24 Club

Through 24 games, Arizona has eight players who have played in all 24 games this season. Two -- JaLea Bennett and Keyahndra Cannon -- have started all 24. Bennett is averaging 21.3 minutes per game and 2.4 rebounds a contest to go with 5.5 points per game. Cannon is 20 of 22 from the free throw line this season and averaging 22.5 minutes per game. She's scored exactly 100 points on the season. The others to have played in all 24 games this season: Malena Washington, Lauren Evans, Michal Miller, Destiny Graham, A'Shanti Coleman and Farrin Bell. Washington is the leading scorer of the group at 10.8 points per game. She's also the team leader in assists with 68 and tops in 3-point makes with 30. She's made all nine of her starts in conference play.

Exclusive Company

Junior guard Malena Washington enters the Bay Area series as one of only six players in the Pac-12 to be averaging at least 10.8 points per game and at least 2.8 assists per contest. The others are UCLA's Jordin Canada, Colorado's Kennedy Leonard, Washington's Kelsey Plum, Stanford's Lili Thompson and Cal's Mikayla Cowling. Washington is 23rd in the league in scoring and 13th in assists.

Freshmen Getting Minutes

Arizona enters the final six conference games of the season with four freshmen averaging at least eight minutes per game this season. Taryn Griffey, who has played in 16 games with 14 starts, is the leading scorer of the bunch at nine points per game. She's also shooting 43 percent from 3-point range. Michal Miller, averaging 8.8 minutes per game, is third on the team with 12 made 3-pointers. Post players Destiny Graham and A'Shanti Coleman have also both gotten valuable minutes with Graham shooting 48 percent from the floor in Pac-12 games this season. Coleman is one of five players on the roster shooting better than 40 percent from the floor. Coleman also has 14 blocks this season, which is second on the team.

Boards and Buckets By Bre

Junior forward Breanna Workman leads the Wildcats with a .479 shooting percentage from the field. She's 46 of 96 in 20 games this season. She's also leading the team with 90 rebounds on the season, posting two more than fellow junior LaBrittney Jones. Workman is shooting .654 from the free throw line, but is 11 of 14 (79 percent) over her last seven games. Workman started the first eight games of the season, before missing four games with a knee injury. She returned Jan. 8 against Washington State, but didn't start in either of her first two games. She was inserted into the starting lineup Jan. 15 against Utah and has remained in it the past eight games. During that stretch, she's 18 of 36 from the floor (50 percent).

Washington's World

Junior guard Malena Washington is enjoying her best stretch of the 2015-16 season. The junior guard from Beaumont, Texas scored a career-high

23 points against Oregon in the final game of January on 9 of 15 shooting from the floor. She hit both of her free throws and added two rebounds, two assists and two steals in the game. Washington has her season average at 10.8 points per game after averaging 6.9 points per game last year as a sophomore. Last time out, Washington poured in 14 points in 31 minutes against UCLA, going 6 of 14 from the floor. The Tyler Junior College transfer has already registered more total points, steals, assists and 3-pointers in than she did in 30 games last season. She's only through 24 games this season. Washington is shooting .372 from the floor this year after shooting .341 last year. From 3-point range, she's shooting .294 after shooting .200 last season. Washington has also scored in double figures in four of the past six games.

Doing the Little Things

The Wildcats have 10 players on their roster with at least 10 steals on the season and 10 players with at least 10 assists. For steals, Lauren Evans (21), Malena Washington (20), LaBrittney Jones (20), JaLea Bennett (18), Keyahndra Cannon (17), Breanna Workman (16), Farrin Bell (14), Destiny Graham (13), Taryn Griffey (12) and A'Shanti Coleman (11) are all in double digits. In assists, Washington leads the way with 68. Also in double digits: Bell (28), Cannon (28), Evans (26), Bennett (26), Workman (26), Griffey (22), Jones (18), Graham (17) and Dejza James (11).

Getting Defensive

The Wildcats have had a strong season on the defensive end through 24 games this season. Arizona ranks fifth in the Pac-12 in scoring defense, eighth in field goal percentage defense, fifth in 3-point field goal percentage defense and sixth in steals. The Cats are giving up 59.5 points per game, while opponents are shooting just .393 from the field and .302 from 3-point distance. Arizona is also collecting 179 steals this season (7.5 per game) and is sixth in the league in rebounding defense at 35.4. In conference games only, Arizona is sixth in scoring defense (63.6).

Depth on Depth on Depth

The Wildcats enter Friday's game with Stanford having six players average at least 20 minutes per game and eight players averaging at least 18 minutes per game.

Arizona Leaders by Minutes Per Game

1. LaBrittney Jones, 27.8
2. Breanna Workman, 25.1
3. Malena Washington, 24.4
4. Keyahndra Cannon, 22.5
5. JaLea Bennett, 21.3
6. Lauren Evans, 20.3
7. Taryn Griffey, 19.9
8. Dejza James, 18.1

Pounding the Paint

Arizona posted a 34-8 advantage over Colorado in points in the paint in their most recent conference win. The +16 advantage was the second widest of the season. Arizona posted a 48-20 points in the

TALE OF THE TAPE

Category	Arizona	Stanford
Scoring	1352	1586
PPG	56.3	66.1
Scoring Margin	-3.1	+13.0
Field Goals-Attempt	516-1328	6562-1368
Field Goal Pct.	.389	.411
3PT FGs-Attempts	89-277	156-447
3PT FG Pct.	.321	.349
3PT FG MPG	3.7	6.5
Free Throw-Attempts	231-362	306-444
Free Throw Pct.	.638	.689
Rebounds/RPG	870/36.2	1020/42.5
Rebound Margin	+0.9	+6.1
Assists/APG	293/12.2	330/13.8
Turnovers/TPG	417/17.4	349/14.5
TO Margin	-0.3	-1.2
Assist/TO ratio	0.7	0.9
Steals/SPG	179/7.5	155/6.5
Blocks/BPG	77/3.2	143/6.0

paint advantage over Louisiana Tech last month. The 34 points were the third most in the paint this season by the Wildcats and the most in a conference game. Arizona posted 48 points against Louisiana Tech and 36 against New Mexico State. Arizona has posted 30 or more points in the paint four times this season. Arizona posted a 12-0 advantage in points in the paint in the first quarter of the win over the Buffaloes and 18-0 in the first half. Arizona didn't allow a point in the paint defensively until the third quarter. Arizona outscored Arizona State 26-22 in the paint in Friday's game.

LB Loves the 4th Quarter

LaBrittney Jones is coming off a season-high 22 points against Colorado and also added nine rebounds. It capped a big weekend for the junior from Cedar Hill, Texas, who had 19 points and seven rebounds against Utah. In both games, Jones came alive in the fourth quarter and played some of her best basketball. Against Utah, Jones had 10 points in the final quarter, including her first two 3-pointers of the season. Jones also collected a big steal and helped the Wildcats nearly erase an 11-point deficit with three minutes to play. One game later against Colorado, Jones again scored 10 points in the final quarter and helped Arizona secure a 11-point win over the Buffaloes. Arizona entered the final quarter leading by just two, but outscored Colorado by nine in the fourth. On top of her 10 points in the fourth, Jones also had a block of Jamee Swan that helped turn the momentum of the game. It was Jones' 92nd career block, which moved her into fifth all-time at Arizona. On Friday against Arizona State, Jones hit a pair of 3-pointers. All four of her 3 pointers this season have come in the fourth quarter.

Last 10 vs. Stanford

1/2/16: Stanford 59, at Arizona 34
2/8/15: at Arizona 60, Stanford 57
1/16/15: at Stanford 77, Arizona 47
2/16/14: at Stanford 77, Arizona 48
1/17/14: Stanford 96, at Arizona 52
2/8/13: at Stanford 73, Arizona 43
2/4/12: Stanford 91, at Arizona 51

3/11/11: Stanford 100, Arizona 71
2/5/11: Stanford 91, at Arizona 61
1/6/11: at Stanford 87, Arizona 54

Hitting the glass

LaBrittney Jones pulled down 10 rebounds against Cal earlier this month for her seventh career double digit rebounding game and then did it again Friday against USC. Jones, who is averaging 5.6 rebounds per game this season, missed a double-double against the Golden Bears by one point. Jones had nine points and six rebounds against Washington State. She missed another double digit rebounding game against Colorado when she collected nine.

Jones' career double digit rebounding games

11/8/13: 10 at Iona
12/15/13: 15 vs. Texas Tech
1/3/14: 11 at Washington
11/17/14: 13 vs. Cal-State Bakersfield
12/3/14: 12 vs. Grambling State
1/5/15: 10 vs. Washington
1/4/16: 10 vs. California
2/5/16: 10 vs. USC

LB's Block Party

It hasn't taken long for LaBrittney Jones to show off her ability on the defensive end. The junior from Cedar Hill, Texas has 18 blocks in 15 games this season, giving her 94 for her career. Jones just passed Dana Patterson and Anne McFadden to move into fifth place all-time in school history. In her career, Jones is averaging more than a block per game. She has 94 blocks in just 74 career games. Jones has also scored in double figures nine times in her 15 games this season and has gotten to the free throw line a team-high 70 times in just 15 games.

Arizona Career Blocked Shots Leaders

1. Shawntinice Polk, 222
2. Ify Ibekwe, 166
3. Elizabeth Pickney, 147
4. Marte Alexander, 121
5. LaBrittney Jones, 94
6. Dana Patterson, 91
7. Anne McFadden, 87

Second Chance Cats

In their win over Cal, the Wildcats collected 19 offensive rebounds and 11 second chance points. Arizona held the Golden Bears to just seven offensive boards and three second chance points. LaBrittney Jones had four offensive rebounds and Dejza James had three. A'Shanti Coleman, Destiny Graham, JaLea Bennett, Malena Washington and Farrin Bell all contributed one offensive rebound in the win. The 19 offensive boards tied a season-high set two times prior. Taking it further, the Wildcats have set their season high three out of the last four games. Arizona's previous high in the first 10 games was 17 set just once.

It's A Bench Party

Malena Washington's production has been a big reason why Arizona's bench has been so dangerous this season. Arizona's second leading scorer, Washington, who is at 10.6 points per game, came

SITUATIONAL STATISTICS

Overall	11-13
vs. Pac-12 teams	2-10
vs. Non-Conference foes	9-3
At home	8-5
On the road	2-6
At neutral sites	1-2
In overtime	1-0
In double overtime	0-0
vs. Ranked Teams	1-5
vs. Teams Receiving Votes for Top 25	0-2
In games decided by 3 points or less	1-1
In games decided by 4-5 points	2-2
In games decided by 6-10 points	3-1
In games decided by 11-19 points	4-4
In games decided by 20-plus points	1-5
Scoring first	4-5
Leading at half	8-0
Tied at half	0-1
Trailing at half	3-12
Leading with 10:00 remaining	7-2
Trailing with 10:00 remaining	2-11
Tied with 10:00 remaining	2-0
Leading with 5:00 remaining	8-1
Trailing with 5:00 remaining	3-12
Tied with 5:00 remaining	0-0
Arizona shoots 40% or better	9-5
Arizona shoots less than 40%	1-8
Arizona shoots better than opponent	9-3
Opponent shoots better	2-10
Opponent shoots 40% or better	4-8
Arizona out-rebounds opponent	8-4
Opponent out-rebounds Arizona	3-9
Arizona shoots 70% or better from FT line	3-3
Arizona has more FT attempts	7-1
Opponent has more FT attempts	4-12
Teams have equal FT attempts	0-0
Arizona shoots 40% or better from 3-pt	6-1
Arizona has more turnovers than opponent	1-8
Arizona has less turnovers than opponent	8-4
Arizona scores 90-plus points	0-0
Arizona scores 80-89 points	0-0
Arizona scores 70-79 points	2-0
Arizona scores 60-69 points	7-0
Arizona scores 50-59 points	2-5
Arizona scores less than 50 points	0-8
Opponent scores 90-plus points	0-0
Opponent scores 80-89 points	0-0
Opponent scores 70-79 points	0-3
Opponent scores 60-69 points	4-6
Opponent scores 50-59 points	5-4
Opponent scores less than 50 points	2-0
Arizona bench scores more	10-5
Opponent bench scores more	1-6
Arizona scores more fast break points	6-4
Opponent scores more fast break points	1-6
Fast break points are even	4-3
Arizona scores more points in the paint	8-2
Opponent scores more points in the paint	3-10
Arizona scores more points off turnovers	7-4
Opponent scores more points off turnovers	1-9
Points off turnovers are even	3-0
Arizona has more second chance points	7-4
Opponent has more second chance points	4-9
Second chance points are equal	0-0
Arizona Streaks...	
Current streak	L6
Homecourt streak	L3
Road streak	L5
Neutral court streak	L1
Last 5 games	0-5
Last 10 games	1-9
Arizona By Month...	
November	4-1
December	5-2
January	2-8
February	0-2
March	0-0
Arizona By Day Of The Week...	
Sunday	1-5
Monday	3-0
Tuesday	1-0
Wednesday	2-0
Thursday	1-0
Friday	1-5
Saturday	2-3
Arizona By Time...	
Day	6-7
Night	5-6



ARIZONA IN THE PAC-12 (through Feb.3)

Team Category	Total	Place	Leader
Scoring Offense	56.3	12th.....	UCLA (76.4)
Scoring Defense	59.5	5th.....	Oregon State (50.0)
Scoring Margin	-3.1	11th	Oregon State (+17.7)
Free Throw Pct.	.638	12th.....	Washington (.771)
Field Goal Pct.	.389	12th.....	Oregon (.477)
Field Goal Pct. Defense	.393	8th.....	Oregon State (.309)
3-Point Pct.	.321	10th.....	Oregon (.425)
3-Point Pct. Defense	.302	5th.....	Oregon State (.245)
Rebounding Offense	36.2	12th.....	UCLA (44.5)
Rebounding Defense	35.4	6th.....	Oregon State (31.7)
Rebounding Margin	+0.9	10th	Oregon State (+12.6)
Blocked Shots	3.2	11th.....	Oregon State (6.7)
Assists Per Game	12.2	11th.....	Oregon (16.7)
Steals Per Game	7.5	6th.....	USC (10.5)
Turnover Margin	-0.3	7th.....	USC (+5.8)
Assist-to-Turnover Ratio	0.7	12th.....	Oregon (1.1)
Offensive Rebounds	12.4	8th.....	UCLA (16.8)
Defensive Rebounds	23.8	10th....	Oregon State (32.4)
Defensive Rebound Pct.	.672	8th.....	Oregon State(.744)
Offensive Rebound Pct.	.343	9th.....	UCLA (.404)
3-Ptrs Made Per Game	3.7	12th.....	Oregon (8.0)

off the bench the first 14 contests this season, before being inserted into the starting five earlier this month. She's now started three games, all in conference play. Lauren Evans, Michal Miller, Farrin Bell, Deja James and Destiny Graham have all come off the bench in 10 or more games to provide production. Through 19 games, the bench is outscoring opponents 485-361 for a +124 margin. The bench has scored 30 or more points six times.

Bench Scoring

vs. UCLA: 5-32

vs. USC 16-0

at Oregon: 9-9

at Oregon State: 26-26

vs. Arizona State: 5-26

at Arizona State: 6-20

vs. Colorado: 12-10

vs. Utah: 11-14

at Washington: 20-7

at Washington State: 16-43

vs. Cal 30-7

vs. Stanford: 20-44

vs. George Mason : 22-24

vs. Gardner-Webb: 35-9

vs. Florida Gulf Coast: 25-17

vs. SMU: 21-2

vs. Louisiana Tech: 44-18

vs. Pacific: 40-25

vs. NMSU: 32-13

at North Texas: 16-3

vs. Kansas: 31-11

at San Diego: 29-9

vs. Howard: 26-6

at Toledo: 27-26

Cashing in at the Charity Stripe

In their win over Cal, the Wildcats went 13-14 from the free throw line for their best performance of the season. Arizona went 7-8 from the line in the fourth quarter with LaBrittney Jones and Malena Washington combining to go 4-4 in the final 15 seconds to extend a 53-52 lead to the final 57-52 score. Jones went 5-5 in the game and Washington went 3-4. Taryn Griffey and Lauren Evans each went 2-2 and Deja James was 1-1. In the win over the Buffaloes, Arizona went to the free throw line 24 times, hitting 17 of them. The Wildcats only sent Colorado to the free throw line 12 times. Arizona is 7-0 this season when attempting more free throws than the opponent.

Recapping Non-Conference Play

Arizona went 9-3 in non-conference play this season, which is its best mark since going 11-1 in 2011-12. It marks the third time in coach Niya Butts' eight seasons that the Wildcats won at least nine games in pre-conference play. The Wildcats enter their Pac-12 opener with Stanford with junior guard Malena Washington leading the team in scoring at 11.3 points per game. LaBrittney Jones, who missed the first eight games with a foot injury, is averaging 11.0 points a contest in the four games she has played in. Redshirt freshman guard Taryn Griffey has soared in her first season and is averaging 10.9 points per game and is shooting 49 percent

NUMBERS TO KNOW

85

Arizona's 2015-2016 roster returns 85 combined starts from last season. Malena Washington led the way with 25 starts in 30 games.

9.9

The Wildcats averaged 9.9 assists per game last season. Candice Warthen was tops with 83 assists in 30 games. Malen Washington was second with 64.

44

LaBrittney Jones had nearly half of Arizona's blocks last season. As a team, the Wildcats had 90 blocks. Jones finished with 44.



NATIONAL RANKINGS

ASSOCIATED PRESS = Week 14

Rk	Team	Record*	Points	Prev.
1.	Connecticut (32)	23-0	800	1
2.	South Carolina	22-1	765	2
3.	Notre Dame	23-1	739	3
4.	Baylor	23-1	699	4
5.	Maryland	21-3	660	5
6.	Texas	21-1	653	6
7.	Ohio State	19-4	599	7
8.	Oregon State	18-3	542	9
9.	Arizona State	20-4	518	8
10.	Florida State	19-4	515	10
11.	Mississippi State	21-4	485	11
12.	Louisville	18-6	418	13
13.	Stanford	19-5	389	15
14.	UCLA	17-6	366	14
15.	Texas A&M	16-7	354	12
16.	Florida	19-4	305	22
17.	Michigan State	18-5	286	17
18.	Kentucky	16-6	231	18
19.	Miami (Fla.)	20-4	219	16
20.	Oklahoma State	18-4	202	25
21.	Oklahoma	16-6	132	20
22.	South Florida	16-6	115	19
23.	DePaul	19-7	84	NR
24.	West Virginia	18-6	80	NR
25.	Tennessee	14-9	49	23

Others receiving votes: Missouri 35, Syracuse 23, Colorado State 23, BYU 20, **Washington 12**, Duquesne 12, Georgia 9, UTEP 6, Albany 5, Minnesota 3, George Washington 3, Purdue 3, Green Bay 1, **Oregon 1**, Arkansas State 1.

USA TODAY/COACHES = Week 14

Rk	Team	Record*	Points	Prev.
1.	Connecticut (32)	23-0	800	1
2.	South Carolina	22-1	750	2
3.	Notre Dame	23-1	746	3
4.	Baylor	23-1	707	4
5.	Texas	21-1	660	6
6.	Ohio State	19-4	644	7
7.	Maryland	21-3	601	5
8.	Oregon State	20-3	589	8
9.	Florida State	19-4	534	9
10.	Arizona State	20-4	500	10
11.	Mississippi State	21-4	457	12
12.	Louisville	18-6	410	13
13.	Texas A&M	16-7	398	11
14.	Stanford	19-5	373	15
15.	Michigan State	18-5	340	14
16.	UCLA	17-6	296	16
17.	Miami (Fla.)	20-4	265	20
18.	Kentucky	16-6	262	18
19.	Florida	19-4	237	22
20.	South Florida	16-6	163	17
21.	Oklahoma	16-6	135	19
22.	Syracuse	18-6	121	23
23.	DePaul	19-7	113	24
24.	Duquesne	21-2	51	NR
24.	Oklahoma State	18-4	51	NR

Others receiving votes: BYU 44, Misouri 31, Tennessee 31, St. John's 16, West Virginia 14, Seton Hall 13, George Washington 10, Duke 8, Green Bay 8, Albany 5, **Florida Gulf Coast 4**, Western Kentucky 4, Auburn 4, UTEP 2, NC State 2, Colorado State 1.

BOLD: 2015-16 Arizona opponents

from 3-point distance. Arizona went 6-0 at McKale Center during non-conference play and outscored opponents by an average margin of 14.5 points per game. The most lopsided contest game on Nov. 18, when the Wildcats beat Howard 65-28, setting a new school record for fewest points allowed in a game. The closest contest was a 68-64 win over New Mexico State on Dec. 2.

Some "Key" Steals

Senior Keyahndra Cannon had five steals in the first nine games of the season, but has turned it on recently. The San Diego native has nine steals in a three-game stretch, picking up three steals in three straight games, before being shut out against Stanford. Cannon has four three-steal games to her credit this season, with the other one coming on Nov. 18 against Howard. Cannon has 62 steals in her career and is on pace to shatter her season best of 21 steals set last year as a junior.

Destined to Start

Freshman Destiny Graham made her first career start last game against George Mason and certainly left her mark. The freshman from San Francisco, California, who played her high school ball in East Palo Alto, had 14 points and four rebounds in 31 minutes. The points and minutes both marked career highs for the 6-3 freshman. Graham was 6-6 from the free throw line and 4-6 from the floor. She scored six of the team's 15 points in overtime and also added two assists in the victory. Graham has been coming on as the season progresses. She played 28 minutes in the season opener at Toledo with the Wildcats down Dejza James and LaBrittney Jones, but didn't hit the 20-minute mark again until two games ago against Gardner-Webb, when she played exactly 20 minutes.

Griffey Gets Hot

In the final game of the Puerto Rico Classic, Taryn Griffey exploded for a career-high 29 points. She tied a school record with seven 3-pointers in a game. Griffey finished 7-11 from long range and added four assists in 26 minutes. Griffey hit four of her seven 3-pointers in the final quarter and helped turn a seven-point game into a 19-point win for the Wildcats. Griffey, who has scored in double figures five times this season, put together her first career 20-point game in the win over Gardner-Webb. The freshman guard was 5 of 6 from 3-point range in 13 second-half minutes against the Bulldogs. Her 13 minutes in the second half were second to just Jones, who played 16.

Leader of the Bench

Junior guard Malena Washington continues to be a force off the bench for the Wildcats. Washington is second on the team in scoring at 10.8 points per game and twice this season set a career high in points. Against New Mexico State, Washington set a new career mark with 17 points in 27 minutes. One game later, Washington poured in 21 points against Pacific, resetting her career high. She also hit a career best five 3-pointers in the win over the Tigers. A big key to Washington's scoring success this season has been her touch from long distance. The junior from Beaumont, Texas is 18 of 50 from 3-point range through 12 games this season. Last year, Washington was just nine of 45 from deep the entire season and never had more than three in a game. Even though Washington is coming off the bench, she's third in minutes per game at 22.9.

Recapping November

The Wildcats are officially through the first calendar month of the season with a 4-1 record. Last year, the Cats went 2-3 in the first month of the season. This November, Arizona scored road wins over Toledo and North Texas and home wins over Howard and Kansas. A five-point setback in a competitive affair at San Diego stands as Arizona's lone loss this season. Team leaders through one month are: Points Per Game; Malena Washington (10.9); Rebounds Per Game; Breanna Workman (5.8); Steals; Lauren Evans (9); Blocks; A'Shanti Coleman (6); 3-Point Shooting; Taryn Griffey (11-21).

Packed the House

The Wildcats drew 6,652 fans to their Monday matinee matchup with Kansas, setting a new program record for single-game attendance. Monday was School Day, where Arizona welcomed in several thousand students from local elementary schools to enjoy the game with the Jayhawks. The students helped provide an electric atmosphere that helped the Wildcats win 67-52. Kansas coach Brandon Schneider said after the game that the fans certainly had an impact: "I felt like the environment really bothered us early. We knew it was going to be loud. We knew they would have 6,000 plus with the promotion going on today. We practiced with music and crowd noise the last couple of days." The total surpassed last year's School Day of 6,268, which stood as the program record.

Home Sweet Home

Eight of Arizona's 10 wins last season came at the friendly confines of McKale Center and the solid play at home has rolled over to this season. The Wildcats are 6-0 at home to start the season. Arizona beat Howard 65-28, topped Kansas 67-52 on School Day and then beat New Mexico State. Arizona has won seven straight at McKale Center dating back to last season. Last season, Arizona picked up home wins against UC-Santa



Official Basketball Box Score -- Game Totals -- Final Statistics
Arizona vs Toledo
11/14/15 Noon at Toledo, OH (Savage Arena)

Arizona 62 • 1-0

#	Player		Total		3-Ptr		Rebounds			PF	TP	A TO Blk Stl				Min			
			FG	FGA	FG	FGA	FT	FTA	Off			Def	Total	A	TO		Blk	Stl	
00	WORKMAN, Breanna	f	4-7	0-1	2-5		2	5	7	2	10	1	4	0	0	28			
42	COLEMAN, A'Shanti	f	1-2	0-0	0-0		0	0	0	2	2	1	0	1	0	12			
03	GRIFFEY, Taryn	g	6-10	6-9	0-0		0	4	4	1	18	4	4	0	1	23			
13	CANNON, Keyahndra	g	1-4	0-0	0-0		0	1	1	0	2	3	3	0	1	26			
33	BENNETT, JaLea	g	1-4	0-1	1-2		0	1	1	3	3	0	0	1	1	15			
14	EVANS, Lauren	g	4-7	0-0	0-0		6	4	10	3	8	1	1	1	3	26			
10	WASHINGTON, Malena	g	4-13	2-5	0-0		0	1	1	2	10	4	1	0	2	27			
20	BELL, Ferrin	g	1-1	0-0	2-4		0	0	0	1	4	0	1	1	0	10			
21	GRAHAM, Destiny	g	1-4	0-0	0-2		5	4	9	2	2	3	0	1	3	28			
23	MILLER, Michal	g	1-4	1-2	0-0		1	0	1	0	3	0	0	0	0	5			
Team							0	1	1										
Totals				24-56		9-18		5-13		14	21	35	16	62	17	16	5	11	200
FG % 1st Half: 11-26			42.3%	2nd half: 13-30			43.3%	Game: 24-56			42.9%	Deadball Rebounds							
3FG % 1st Half: 4-9			44.4%	2nd half: 5-9			55.6%	Game: 9-18			50.0%	4,1							
FT % 1st Half: 3-8			37.5%	2nd half: 2-5			40.0%	Game: 5-13			38.5%								

Toledo 59 • 0-1

#	Player		Total		3-Ptr		Rebounds			PF	TP	A TO Blk Stl			Min
			FG	FGA	FG-FGA	FT-FTA	Off	Def	Tot			A	TO	Blk	
12	MONAKANA, Janice	f	0-8	0-2	0-0	2	3	5	3	0	1	0	0	1	25
32	CAPOTOSTO, Ana	f	1-3	1-2	0-2	0	1	1	4	3	0	3	0	1	22
43	REECHER, Sophie	f	4-5	0-0	3-4	1	3	4	2	11	0	1	2	0	28
01	HARRIS, Brenae	g	4-7	0-0	4-5	0	3	3	2	12	4	3	0	0	35
11	BRAVO-HARRIOTT, Jay	g	2-13	1-6	2-2	2	4	6	3	7	1	2	0	1	33
06	BOYD, Mikaela	g	4-6	1-1	0-0	0	2	2	0	9	3	2	0	0	12
05	ST-FORT, Sarah	g	0-0	0-0	0-0	0	0	0	0	0	0	0	0	0	0+
22	McINTYRE, Kaayla	g	2-3	0-0	1-2	2	1	3	0	5	1	2	0	1	11
15	PRINTZ, Halee	g	0-2	0-0	0-0	0	0	0	0	0	0	1	0	1	5
22	RASMUSSEN, Michaela	g	0-0	0-0	0-0	0	0	0	1	0	0	0	0	0	7
33	KESSLER, Nancy	g	0-0	0-0	1-2	0	1	1	0	1	0	0	0	0	1
35	WOODY, Jada	g	4-4	3-3	0-0	1	2	3	1	11	2	1	0	0	21
Team						4	0	4							
Totals			21-51	6-14	11-17	12	20	32	16	59	12	15	2	5	200
FG % 1st Half: 7-22			31.8%	2nd half: 14-29	48.3%	Game: 21-51	41.2%	Deadball Rebounds							
3FG % 1st Half: 2-4			50.0%	2nd half: 4-10	40.0%	Game: 6-14	42.9%	2,1							
FT % 1st Half: 7-13			53.8%	2nd half: 4-4	100.0%	Game: 11-17	64.7%								

Officials: Michelle Del Duco, Barb Smith, Bryan Enterline
Technical fouls: Arizona-None. Toledo-None.
Attendance: 3713

Score by periods	1st	2nd	3rd	4th	Total
Arizona	13	16	17	16	62
Toledo	15	8	23	13	59

Arizona 54 • 2-1

#	Player	f	Total		3-Ptr		Rebounds			PF	TP	A TO Blk Stl			Min
			FG-FGA	FG-FGA	FT-FTA	Off	Def	Total	A			TO	Blk	Stl	
00	WORKMAN, Breanna	f	3-6	0-1	4-6	1	6	7	3	10	2	4	1	1	30
42	COLEMAN, A'Shanti	f	1-2	0-0	0-0	0	1	1	2	2	0	0	1	0	15
03	GRIFFEY, Taryn	g	2-8	1-2	0-0	1	2	3	1	5	2	0	1	0	23
15	CANNON, Keyahndra	g	4-6	0-0	0-0	0	3	3	2	8	1	1	0	0	35
33	BENNETT, JaLea	g	0-3	0-0	0-0	0	0	0	2	0	2	0	1	0	22
10	EVANS, Lauren	g	3-7	0-0	0-0	1	0	1	3	6	0	1	0	0	22
14	WASHINGTON, Malena	g	4-10	2-4	0-0	1	0	1	4	10	4	6	0	0	9
20	BELL, Ferrin	g	1-1	0-0	0-0	1	2	3	2	2	1	0	0	0	8
21	GRAHAM, Destiny	g	1-2	0-0	1-1	0	2	2	2	3	0	0	1	0	9
23	MILLER, Michal	g	0-1	0-1	0-0	0	0	0	0	0	0	0	0	1	6
31	JAMES, Dejza	g	4-10	0-0	0-2	2	8	10	4	8	0	3	0	1	21
Team						5	1	6							
Totals			23-56	3-8	5-9	12	25	37	25	54	12	16	5	3	200
FG % 1st Half: 9-28 32.1% 2nd half: 14-28 50.0% Game: 23-56 41.1% Deadball Rebounds															
3FG % 1st Half: 1-4 25.0% 2nd half: 2-4 50.0% Game: 3-8 37.5% Rebounds															
FT % 1st Half: 2-2 100.0 2nd half: 3-7 42.9% Game: 5-9 55.6% 2															

San Diego 59 • 3-0

#	Player		Total		3-Ptr		Rebounds			PF	TP	A TO Blk Stl				Min
			FG-FGA	FG-FGA	FT-FTA	FT-FTA	Off	Def	Tot							
44	WILLIAMS, Sydney	f	2-9	0-4	0-2	2	2	4	4	4	1	1	0	0	31	
11	HOOD, Malina	g	7-15	1-5	5-6	1	6	7	2	20	1	3	0	2	38	
22	HOOD, Maya	g	4-9	0-0	4-5	6	6	12	2	12	2	3	2	3	40	
25	HAMILTON, Katherine	g	2-5	0-1	6-6	0	5	5	3	10	5	2	2	1	22	
32	WOODWARD, Cori	g	1-5	1-2	1-2	0	4	4	0	4	0	0	0	0	36	
02	HEPBURN, Tayla	g	1-1	0-0	1-1	0	0	0	0	3	0	1	0	0	7	
05	WARD-EL, Aubrey	g	3-8	0-1	0-0	2	0	2	2	6	1	2	0	1	13	
24	BUHR, Caroline	g	0-1	0-0	0-0	0	0	0	2	0	1	1	0	0	13	
Team						1	0	1								
Totals				20-53	2-13	17-22	12	23	35	15	59	11	15	4	7	200
FG % 1st Half: 8-26			30.8%	2nd half: 12-27	44.4%	Game: 20-53			37.7%	Deadball Rebounds						
3FG % 1st Half: 0-7			0.0%	2nd half: 2-6	33.3%	Game: 2-13			15.4%	1						
FT % 1st Half: 9-10			90.0%	2nd half: 8-12	66.7%	Game: 17-22			77.3%							

Officials: Shelly Russi, Wanda Szeremeta, Cheryl Blue
Technical fouls: Arizona-None. San Diego-None.
Attendance: 714

Score by periods	1st	2nd	3rd	4th	Total
Arizona	9	12	18	15	54
San Diego	15	10	19	15	59

Last FG - ARIZ 4th-00:35, USD 4th-03:55.
Largest lead - ARIZ None, USD by 10 3rd-03:06.

Score tied - 1 time.
Lead changed - 0 times.

Official Basketball Box Score -- Game Totals -- Final Statistics
HOWW vs Arizona
11/18/15 7:00 p.m. at McKale Center

HOWW 28 • 0-3

#	Player		Total		3-Ptr		Rebounds			PF	TP	A	TO	Blk	Stl	Min
			FG-FGA	FG-FGA	FT-FTA	Off	Def	Tot								
31	THOMAS, Kiana	f	0-1	0-0	3-4	1	2	3	0	3	0	1	1	0	31	
35	JOHNSON, Sydney	f	1-3	0-0	3-4	1	2	3	3	5	1	5	0	0	37	
22	GONZALES, Victoria	c	4-13	0-1	6-11	2	2	4	5	14	0	6	0	0	32	
11	MORRISON, Allese	g	0-3	0-0	0-0	0	6	6	1	0	0	6	0	1	27	
13	SHUMATE, Da'Shae	g	0-4	0-0	0-0	0	0	0	2	0	2	2	0	0	17	
03	TIMMONS, Hannah	g	0-1	0-1	1-2	1	0	1	0	1	0	0	0	1	10	
04	TARVER, Shaylon	g	1-6	1-3	2-2	0	1	1	2	5	0	2	0	0	19	
10	DOPSON, Tajzhane	g	0-2	0-1	0-0	0	1	1	4	0	0	1	2	0	12	
23	BROWN, Essence	g	0-6	0-1	0-0	3	0	3	1	0	0	6	0	3	15	
Team						3	5	8								
Totals			6-39	1-7	15-23	11	19	30	18	28	3	30	3	5	200	
FG % 1st Half: 3-19			15.8%	2nd half: 3-20	15.0%	Game: 6-39	15.4%	Deadball Rebounds								
3FG % 1st Half: 0-1			0.0%	2nd half: 1-6	16.7%	Game: 1-7	14.3%	4,1								
FT % 1st Half: 8-11			72.7%	2nd half: 7-12	58.3%	Game: 15-23	65.2%									

Arizona 65 • 2-0

#	Player		Total		3-Ptr		Rebounds			PF	TP	A TO Blk Stl				Min
			FG-FGA	FG-FGA	FT-FTA	Off	Def	Tot	A			TO	Blk	Stl		
00	WORKMAN, Breanna	f	0-1	0-0	0-0	1	4	5	2	0	3	4	0	2	22	
42	COLEMAN, A'Shanti	f	3-6	0-0	2-2	1	4	5	3	8	0	1	0	3	28	
03	GRIFFEY, Taryn	g	3-5	1-3	0-2	1	1	2	0	7	4	0	1	1	20	
15	CANNON, Keyahndra	g	2-7	1-1	1-1	1	2	3	2	6	0	4	0	3	22	
33	BENNETT, JaLea	g	7-12	2-2	2-4	3	1	4	3	18	1	1	0	1	21	
10	EVANS, Lauren		0-2	0-0	0-0	1	2	3	4	0	0	1	1	1	19	
14	WASHINGTON, Malena		2-8	1-3	2-2	0	3	3	2	7	4	2	0	2	26	
20	BELL, Farrin		1-3	0-0	1-2	2	3	5	2	3	4	1	0	0	12	
21	GRAHAM, Destiny		0-1	0-0	0-0	1	0	1	4	0	1	0	0	0	16	
23	MILLER, Michal		5-7	4-6	2-4	0	2	2	2	16	0	3	0	2	14	
	Team					2	3	5				2				
Totals			23-52	9-15	10-17	13	25	38	24	65	17	19	2	15	200	
FG % 1st Half: 14-28 50.0% 2nd half: 9-24 37.5% Game: 23-52 44.2% Deadball																
3FG % 1st Half: 6-10 60.0% 2nd half: 3-5 60.0% Game: 9-15 60.0% Rebounds																
FT % 1st Half: 1-5 20.0% 2nd half: 9-12 75.0% Game: 10-17 58.8% 3,1																



Official Basketball Box Score -- Game Totals -- Final Statistics

Arizona vs North Texas
11/27/15 2:00 PM at Denton, TX (The Super Pit)**Arizona 51 • 4-1**

#	Player	Total		3-Ptr		Rebounds			PF	TP	A	TO	Blk	Stl	Min
		FG-FGA	FG-FGA	FT-FTA	FT-FTA	Off	Def	Tot							
00	WORKMAN, Breanna	f	4-10	0-1	7-10	2	2	4	3	15	1	3	0	0	35
42	COLEMAN, A'Shanti	f	0-1	0-0	0-0	0	2	2	0	0	0	0	0	1	18
03	GRIFFEY, Taryn	g	1-4	0-2	1-2	0	1	1	1	3	0	3	1	0	18
15	CANNON, Keyahndra	g	0-0	0-0	0-0	0	4	4	0	0	3	0	0	1	17
33	BENNETT, JaLea	g	6-9	3-3	2-3	0	2	2	4	17	0	2	0	2	28
10	EVANS, Lauren	g	2-3	0-0	1-1	1	5	6	1	5	1	0	0	4	20
14	WASHINGTON, Malena	g	4-7	0-1	1-2	0	1	1	3	9	0	5	0	2	19
20	BELL, Farrin	g	0-1	0-0	0-0	1	2	3	2	0	2	2	0	1	18
21	GRAHAM, Destiny	g	0-2	0-0	0-2	0	0	0	1	0	0	2	0	2	9
23	MILLER, Michal	g	1-1	0-0	0-0	0	0	0	0	2	0	1	0	0	1
31	JAMES, Dejza	g	0-2	0-0	0-0	0	1	1	3	0	1	3	0	1	17
Team						1	1	2			3				
Totals			18-40	3-7	12-20	5	21	26	18	51	8	24	1	14	200

FG % 1st Half: 9-21 42.9% 2nd half: 9-19 47.4% Game: 18-40 45.0%
3FG % 1st Half: 3-4 75.0% 2nd half: 0-3 0.0% Game: 3-7 42.9%
FT % 1st Half: 3-7 42.9% 2nd half: 9-13 69.2% Game: 12-20 60.0%

North Texas 44 • 1-3

#	Player	Total		3-Ptr		Rebounds			PF	TP	A	TO	Blk	Stl	Min
		FG-FGA	FG-FGA	FT-FTA	FT-FTA	Off	Def	Tot							
23	TAC, Acheil	f	3-6	0-0	2-2	3	9	12	4	8	0	2	1	1	40
24	FRIERSON, Bria	c	0-2	0-0	0-0	1	3	4	5	0	1	4	0	2	21
03	CRINER, Kelsey	g	4-10	0-3	2-6	1	6	7	2	10	3	9	0	1	37
14	ADAMS, Candice	g	3-12	3-11	3-4	1	0	1	4	12	2	1	0	1	23
20	ELLISON, Terra	g	5-8	1-3	0-2	2	1	3	1	11	1	1	0	0	33
02	JONES, Tiedra	g	0-2	0-1	0-0	1	1	2	1	0	1	0	0	0	10
10	WILLIAMS, Kasiney	g	1-1	1-1	0-2	0	0	0	2	3	1	3	0	1	21
15	JOLIVETTE, Brooke	g	0-2	0-1	0-0	0	1	1	1	0	0	1	0	0	3
30	MABODU, Tosin	g	0-1	0-0	0-0	1	0	1	2	0	0	2	0	2	12
Team						2	1	3							
Totals			16-44	5-20	7-16	12	22	34	22	44	9	26	1	8	200

FG % 1st Half: 11-24 45.8% 2nd half: 5-20 25.0% Game: 16-44 36.4%
3FG % 1st Half: 3-8 37.5% 2nd half: 2-12 16.7% Game: 5-20 25.0%
FT % 1st Half: 3-6 50.0% 2nd half: 4-10 40.0% Game: 7-16 43.8%

Officials: R:Michael Price, U1:Tiffany Bird, U2:Michelle Kramer
Technical fouls: Arizona-None. North Texas-None.
Attendance: 961

Score by periods	1st	2nd	3rd	4th	Total
Arizona	11	13	8	19	51
North Texas	18	10	4	12	44

Last FG - ARIZ 4th-00:56, NT 4th-01:17.

Score tied - 3 times.

New Mexico State vs Arizona
12/2/15 7 p.m. at McKale Center**New Mexico State 64 • 6-1**

#	Player	Total		3-Ptr		Rebounds			PF	TP	A	TO	Blk	Stl	Min
		FG-FGA	FG-FGA	FT-FTA	FT-FTA	Off	Def	Tot							
24	Freeman, Brianna	f	1-5	0-0	1-2	1	4	5	4	3	0	3	0	0	19
04	Weber, Sasha	g	5-9	3-7	3-3	0	2	2	2	16	0	4	0	5	34
05	Salas, Brooke	g	5-16	0-3	0-0	0	8	8	2	10	0	3	2	2	24
11	Davis, Shanice	g	1-7	0-3	0-0	1	3	4	2	2	7	5	0	1	34
21	Williams, Tamera	g	6-9	2-3	6-6	0	1	1	3	20	0	2	0	2	37
12	Williams, Zaire	g	0-1	0-1	0-0	0	1	1	1	0	2	3	0	0	13
22	Ellis, Tyler	g	1-3	0-0	0-0	0	1	1	1	2	1	1	0	0	19
23	Scott, Abby	g	4-5	3-4	0-0	0	1	1	5	11	0	0	0	2	19
50	Taylor, Tyesha	g	0-0	0-0	0-0	0	2	2	2	0	0	1	0	0	1
Team						3	1	4							
Totals			23-55	8-21	10-11	5	24	29	22	64	10	22	2	12	200

FG % 1st Half: 12-32 37.5% 2nd half: 11-23 47.8% Game: 23-55 41.8%
3FG % 1st Half: 4-13 30.8% 2nd half: 4-8 50.0% Game: 8-21 38.1%
FT % 1st Half: 1-2 50.0% 2nd half: 9-9 100.0% Game: 10-11 90.9%

Arizona 68 • 5-1

#	Player	Total		3-Ptr		Rebounds			PF	TP	A	TO	Blk	Stl	Min
		FG-FGA	FG-FGA	FT-FTA	FT-FTA	Off	Def	Tot							
00	WORKMAN, Breanna	f	5-8	0-0	1-3	2	3	5	4	11	0	4	0	4	28
42	COLEMAN, A'Shanti	f	1-2	0-0	0-2	0	2	2	3	2	0	1	0	0	10
03	GRIFFEY, Taryn	g	5-7	3-5	1-2	1	1	2	2	14	2	1	0	1	22
15	CANNON, Keyahndra	g	1-3	0-0	0-0	0	0	0	1	2	0	1	0	0	12
33	BENNETT, JaLea	g	2-5	0-2	3-4	0	1	1	2	7	1	2	1	3	20
10	EVANS, Lauren	g	2-3	0-0	2-2	1	0	1	1	6	1	1	0	2	25
11	HARRIS, Cherice	g	0-0	0-0	0-0	0	0	0	0	0	0	0	0	0	2
14	WASHINGTON, Malena	g	6-14	1-6	4-5	1	2	3	2	17	3	4	0	1	27
20	BELL, Farrin	g	0-2	0-0	0-0	0	3	3	0	0	2	3	0	0	20
21	GRAHAM, Destiny	g	0-1	0-0	2-4	1	3	4	2	2	2	0	0	0	10
23	MILLER, Michal	g	0-1	0-0	0-0	0	0	0	0	0	0	1	0	0	3
31	JAMES, Dejza	g	3-8	0-0	1-3	2	11	13	1	7	0	4	2	1	21
Team						3	2	5							
Totals			25-54	4-13	14-25	11	28	39	18	68	11	22	3	12	200

FG % 1st Half: 10-26 38.5% 2nd half: 15-28 53.6% Game: 25-54 46.3%
3FG % 1st Half: 3-8 37.5% 2nd half: 1-5 20.0% Game: 4-13 30.8%
FT % 1st Half: 5-10 50.0% 2nd half: 9-15 60.0% Game: 14-25 56.0%

Officials: Charles Gonzales, Darren Krzesnik, Teresa Turner
Technical fouls: New Mexico State-None. Arizona-None.
Attendance: 741

Score by periods	1st	2nd	3rd	4th	Total
New Mexico State	23	6	20	15	64
Arizona	13	15	17	23	68

Official Basketball Box Score -- Game Totals -- Final Statistics
Pacific vs Arizona
12/05/15 1 p.m. at McKale Center**Pacific 56 • 4-4**

#	Player	Total		3-Ptr		Rebounds			PF	TP	A	TO	Blk	Stl	Min
		FG-FGA	FG-FGA	FT-FTA	FT-FTA	Off	Def	Tot							
03	CLAYTON, Mauriana	f	2-3	0-0	0-0	3	9	12	2	4	1	2	0	0	28
12	BUTLER, Erin	f	1-8	1-7	0-0	1	3	4	1	3	1	0	1	1	28
15	LUUULU-SUMMERS, G.	g	2-9	1-7	2-2	0	2	2	3	7	4	3	0	0	35
23	EACKLES, Hallie	g	2-8	1-3	2-4	0	2	2	2	7	2	4	0	0	29
30	QUEENLAND, Najah	g	3-8	1-1	3-4	2	1	3	4	10	1	5	0	2	23
05	SIMONS, Emily	g	0-0	0-0	0-0	2	0	2	0	0	0	0	0	0	10
11	LOPEZ SAGRERA, Eli	g	0-1	0-0	0-0	1	0	1	0	0	0	0	0	0	2
13	LIDY, Chelsea	g	0-1	0-0	0-0	0	0	0	0	0	0	0	0	0	1
20	COLEMAN, Unique	g	2-5	0-0	3-4	2	0	2	0	7	0	2	1	2	17
21	LI, Ameela	g	0-1	0-0	0-0	0	0	0	0	0	0	2	0	0	4
22	FINNIE, Desire	g	7-11	0-0	4-5	0	3	3	3	18	2	1	1	1	23
Team						3	2	5							
Totals			19-55	4-18	14-19	14	22	36	17	56	11	19	3	6	200

FG % 1st Half: 10-32 31.3% 2nd half: 9-23 39.1% Game: 19-55 34.5%
3FG % 1st Half: 2-10 20.0% 2nd half: 2-8 25.0% Game: 4-18 22.2%
FT % 1st Half: 4-4 100.0% 2nd half: 10-15 66.7% Game: 14-19 73.7%

Arizona 69 • 6-1

#	Player		Total		3-Ptr		Rebounds			PF	TP	A	TO	Blk	Stl	Min
			FG	FGA	FG	FGA	FT	FTA	Off							
00	WORKMAN, Breanna	f	4-8	0-0	0-0	0	5	5	3	8	3	4	0	3	26	
42	COLEMAN, A'Shanti	f	4-9	0-0	1-2	4	3	7	1	9	2	0	4	0	25	
03	GRIFFEY, Taryn	g	1-5	0-2	0-0	0	2	2	1	2	2	1	0	1	20	
15	CANNON, Keyahndra	g	1-3	0-0	4-4	0	2	2	0	6	1	1	0	0	21	
33	BENNETT, JaLea	g	2-5	0-0	0-0	0	1	1	3	4	1	0	0	1	21	
10	EVANS, Lauren		2-4	0-0	0-2	2	4	6	2	4	3	0	0	1	23	
11	HARRIS, Cherice		0-0	0-0	0-0	0	0	0	0	0	1	0	0	0	1	
14	WASHINGTON, Malena		6-10	5-8	4-4	0	1	1	1	21	3	3	0	0	26	
20	BELL, Farrin		2-4	0-0	2-4	0	3	3	1	6	1	2	0	3	14	
21	GRAHAM, Destiny		2-3	0-0	1-2	1	3	4	4	5	1	1	2	0	13	
23	MILLER, Michal		1-3	1-3	1-2	1	0	1	4	4	1	2	0	0	10	
	Team					1	1	2								
Totals			25-54	6-13	13-20	9	25	34	20	69	19	14	6	9	200	

Official Basketball Box Score -- Game Totals -- Final Statistics
Arizona vs Florida Gulf Coast Eagles
 DEC. 20 12:00 PM at COLISEO RUBEN ZAYAS MONTANEZ

Arizona 55 • 7-2

		Total	3-Ptr		Rebounds									
#	Player	FG-FGA	FG-FGA	FT-FTA	Off	Def	Tot	PF	TP	A	TO	Blk	Stl	
00	WORKMAN, Breanna	* 1-3	0-0	4-6	1	5	6	2	6	1	5	0	0	27
03	GRIFFEY, Taryn	* 0-1	0-1	0-0	0	1	1	2	0	1	1	0	0	12
15	CANNON, Keyahndra	* 5-10	0-1	0-0	0	1	1	4	10	1	2	0	3	26
33	BENNETT, Jalea	* 2-4	0-0	0-0	2	2	4	0	4	1	1	1	0	21
42	COLEMAN, A'Shanti	* 5-5	0-0	0-0	0	2	2	2	10	1	4	0	0	18
10	EVANS, Lauren	0-1	0-0	0-0	1	4	5	3	0	3	1	0	0	22
14	WASHINGTON, Malena	3-8	0-3	5-5	0	2	2	1	11	4	1	0	1	27
20	BELL, Farrin	0-0	0-0	0-0	0	1	1	0	0	0	2	0	0	8
21	GRAHAM, Destiny	2-3	0-0	0-0	1	2	3	2	4	1	2	1	1	10
23	MILLER, Michal	1-4	1-2	0-0	1	1	2	0	3	1	0	0	0	6
24	JONES, LaBrittney	3-7	0-1	1-2	3	2	5	1	7	0	0	3	0	15
31	JAMES, Deija	0-1	0-0	0-0	0	2	2	1	0	0	2	0	1	8
Team					4	5	9							
Totals		22-47	1-8	10-12	13	20	42	19	55	14	31	5	6	200

Florida Gulf Coast Eagles 57 • 7-3

		Total			Rebounds									
#	Player	FGA	3-Ptr	FT-FTA	Off	Def	Tot	PF	TP	A	To	Blk	Stl	Min
00	DUNSON, DyTiesha	* 2-3	0-0	0-0	1	1	2	3	4	6	0	0	2	34
02	ATWATER, Kaneisha	* 5-16	0-1	4-5	4	0	4	3	14	3	2	0	5	35
20	LAUGHTER, Haley	* 3-8	1-6	1-2	0	4	4	1	8	0	1	1	2	27
21	GLUESING, Jaime	* 0-3	0-1	2-2	0	3	3	0	2	2	1	1	0	22
24	GRADINJAN, Taylor	* 4-12	3-9	1-2	2	2	4	3	12	0	2	0	0	29
03	MEADOR, Katie	0-1	0-1	0-0	0	0	0	0	0	0	0	0	0	2
12	HAAS, Stephanie	5-7	0-1	1-3	0	1	1	1	11	0	1	1	2	25
14	KNIGHT, Whitney	2-6	2-3	0-0	0	2	2	2	6	1	1	1	0	18
25	MCCASKILL, Sydnei	0-2	0-2	0-0	0	0	0	0	0	1	1	0	1	8
Team					2	1	3							
Totals		21-58	6-24	9-14	9	14	23	13	57	13	9	4	12	200
FG % 1st Half: 13-28		46.4%	2nd half: 8-30	26.7%	Game: 21-58		36.2%	Deadball Rebounds 2						
3FG % 1st Half: 3-12		25.0%	2nd half: 3-12	25.0%	Game: 6-24		25.0%							
FT % 1st Half: 4-7		57.1%	2nd half: 5-7	71.4%	Game: 9-14		64.3%							

Officials: Brian Gardland/ Greg Norton/ Axel Coll
Technical fouls: Arizona-None. Florida Gulf Coast Eagles-None.
Attendance:

Score by periods	1st	2nd	3rd	4th	Total
Arizona	16	14	16	9	55
Florida Gulf Coast Eagles	19	14	8	16	57

Last FG - ARIZ 4th-00:51, FGCU 4th-02:07.
Largest lead - ARIZ by 6 4th-07:27, FGCU by 6 2nd-05:58.

Score tied - 7 times.
Lead changed - 5 times

Official Basketball Box Score -- Game Totals -- Final Statistics
George Mason vs Arizona
12/29/15 2 p.m. at McKale Center

George Mason 60 • 5-8

#	Player		Total			3-Ptr			Rebounds									
			FG	FGA	FT	FTA	Off	Def	Tot	PF	TP	A	To	Bk	St	Min		
24	PADGETT, Tiffany	f	3-10	0-2	1-2	2	6	8	2	7	2	3	0	4	31			
32	DODSON, Tayler	f	0-3	0-0	0-0	5	0	5	2	0	0	0	0	1	26			
13	O'DONNELL, Bridget	c	1-2	0-0	0-0	1	0	1	1	2	0	1	0	1	11			
12	WRIGHT, Kara	g	4-11	0-3	0-0	0	4	4	4	8	3	4	0	1	38			
31	BROWN, Taylor	g	7-20	2-5	3-4	0	1	1	2	19	4	4	0	1	41			
04	WILLIAMS, Desare		0-0	0-0	0-0	0	0	0	0	0	0	0	0	0	1			
05	MOMAMED, Reana		0-1	0-1	0-0	1	1	2	0	0	1	1	0	0	5			
10	TRIGGS, Jewel		0-0	0-0	1-4	0	0	0	0	1	0	1	0	1	15			
11	HUTZELL, Katrina		0-0	0-0	0-0	0	0	0	0	0	0	0	0	0	1			
20	BELL, Chinyere		3-6	0-0	3-4	3	6	9	2	9	1	2	1	0	31			
33	MOKUBE, Kristi		6-12	0-0	2-3	1	7	8	4	14	0	3	2	0	25			
Totals			24-65	2-11	10-17	17	30	47	17	60	11	20	4	8	225			
FG % 1st Half: 11-29 37.9% 2nd half: 10-29 34.5% OT: 3-7 42.9% Game: 24-65 36.9% Deadball																		
3FG % 1st Half: 2-8 25.0% 2nd half: 0-2 0.0% OT: 0-1 0.0% Game: 2-11 18.2% Rebound																		
FT % 1st Half: 6-7 85.7% 2nd half: 3-9 33.3% OT: 1-1 100.0 Game: 10-17 58.8% 4																		

Arizona 68 • 9-3

		Total			3-Ptr		Rebounds									
#	Player		FG	FGA	FT	FTA	Off	Def	Total	PF	TP	A	T	Bk	Stl	Min
21	GRAHAM, Destiny	f	4-6	0-0	6-6		2	2	4	3	14	2	1	0	0	31
24	JONES, LaBrittney	f	4-8	0-0	8-11		2	3	5	2	16	1	1	3	2	27
03	GRIFEY, Taryn	g	3-9	2-6			2	3	5	1	9	1	4	0	3	24
15	CANNON, Keyahndra	g	0-3	0-1	0-0		1	3	4	1	0	3	1	0	3	29
33	BENNETT, JaLea	g	3-9	0-2	1-2		0	0	0	2	7	3	1	0	1	18
10	EVANS, Lauren		5-7	0-1	0-0		3	3	6	1	10	2	1	3	1	27
14	WASHINGTON, Malena		4-10	3-6	1-2		1	3	4	3	12	1	2	0	0	24
20	BELL, Farrin		0-1	0-0	0-0		0	1	1	1	0	0	0	0	1	8
23	MILLER, Michal		0-5	0-2	0-0		0	1	1	2	0	1	0	1	1	6
31	JAMES, Deja		0-4	0-0	0-0		3	4	7	0	0	0	3	1	1	13
42	COLEMAN, A'Shanti		0-6	0-0	0-0		3	0	3	1	0	3	2	1	1	18
TEAM							2	3	5				1			
Totals			23-68	5-18	17-23		19	66	45	17	68	17	17	9	14	225
FG % 1st Half: 12-29		41.4%	2nd half: 7-33		21.2%	OT: 4-6	26		45%	Game: 23-68		33.8%	Deadball			
3FG % 1st Half: 2-6		33.3%	2nd half: 2-11		18.2%	OT: 1-1	100.0		Game: 5-18		27.8%	Rebound				
FT % 1st Half: 8-11		72.7%	2nd half: 4-4		75.0%	OT: 6-8	75.0%		Game: 17-23		73.9%	2.				

Officials: Melissa Barlow, Karen Lasuik, Benito Luna
Technical fouls: George Mason-None. Arizona-None
Attendance: 990

Score by periods	1st	2nd	3rd	4th	OT	Total
George Mason	16	14	7	16	7	60
Arizona	19	15	13	6	15	68

Last FG - MASON OT-01:42, ARIZ OT-00:40.
Largest lead - MASON None, ARIZ by 10 3rd-00:01.



Official Basketball Box Score -- Game Totals -- Final Statistics

Stanford vs Arizona
1/2/16 3 p.m. at McKale Center**Stanford 59 • 11-2, (1-0)**

#	Player	Total		3-Ptr		Rebounds		PF	TP	A	TO	Blk	Stl	Min
		FG-FGA	FG-FGA	FT-FTA	Off Def Tot	PF	TP							
24	McCall, Erica	f	3-4	0-0	1 3 4	0	6	0	1	2	1	2	1	19
32	Johnson, Kailee	f	0-1	0-0	2-4	2 5 7	2	2	1	0	1	2	1	19
01	Thompson, Lili	g	1-6	0-3	2-2	0 3 3	3	4	4	6	0	3	26	19
10	Roberson, Briana	g	1-6	0-5	1-2	1 0 1	1	3	2	2	0	0	19	19
44	Samuelson, Karlle	g	0-1	0-1	0-0	3 3 6	3	0	1	0	0	0	18	18
00	Green, Alex		0-1	0-1	0-0	0 1 1	1	0	0	1	0	0	5	5
02	Coffee, Shannon		0-2	0-0	0-0	0 0 0	0	0	0	1	0	0	3	3
05	Johnson, Kaylee		0-1	0-0	3-6	1 5 6	3	3	1	0	2	1	19	19
11	Smith, Alanna		6-8	4-5	0-0	1 3 4	3	16	0	3	2	0	17	17
12	McPhee, Brittany		6-10	3-6	6-8	0 1 1	0	21	1	2	1	1	26	26
13	Snizek, Marta		2-3	0-0	0-0	0 4 4	2	4	3	3	0	0	18	18
22	Romano, Alexa		0-0	0-0	0-0	1 0 1	0	0	0	0	0	0	3	3
25	Lakhiani, Kiran		0-0	0-0	0-0	0 1 1	0	0	0	1	0	0	3	3
34	Picknell, Tess		0-0	0-0	0-0	1 0 1	1	0	0	2	1	0	5	5
	Team				2 3 5					1				
	Totals		19-43	7-21	14-22	13 32 45	19	59	13	23	9	8	200	200

FG % 1st Half: 15-25 60.0% 2nd half: 4-18 22.2% Game: 19-43 44.2% Deadball Rebounds 3
3FG % 1st Half: 3-7 57.1% 2nd half: 3-14 21.4% Game: 7-21 33.3%
FT % 1st Half: 5-8 62.5% 2nd half: 9-14 64.3% Game: 14-22 63.6%

Arizona 34 • 9-4, (0-1)

#	Player	Total		3-Ptr		Rebounds		PF	TP	A	TO	Blk	Stl	Min
		FG-FGA	FG-FGA	FT-FTA	Off Def Tot	PF	TP							
21	GRAHAM, Destiny	f	0-3	0-0	0-0	1 1 2	3	0	2	1	0	2	20	20
24	JONES, LaBrittney	f	3-13	0-2	5-8	2 3 5	1	11	1	4	1	2	30	30
03	GRIFFEY, Taryn	g	0-3	0-1	0-0	1 1 2	2	0	0	0	0	0	13	13
15	CANNON, Keyahndra	g	1-6	0-2	1-1	1 2 3	1	3	1	3	0	0	12	12
33	BENNETT, JaLea	g	0-2	0-0	0-2	1 2 3	2	0	0	1	0	1	27	27
10	EVANS, Lauren		1-2	0-0	3-4	1 0 1	1	5	3	1	0	1	25	25
14	WASHINGTON, Malena		2-11	1-5	0-0	0 1 1	0	5	0	2	0	1	21	21
20	BELL, Farrin		0-1	0-0	0-0	0 1 1	1	0	0	0	0	0	11	11
23	MILLER, Michal		1-4	0-0	0-0	1 0 1	1	2	0	0	0	1	6	6
31	JAMES, Dejza		2-6	0-0	2-4	3 2 5	3	6	0	0	0	1	18	18
42	COLEMAN, A'Shanti		1-2	0-0	0-0	1 2 3	1	2	0	0	0	0	12	12
	Team				1 1 2					1				
	Totals		11-53	1-10	11-19	13 16 29	16	34	7	13	1	9	200	200

FG % 1st Half: 5-27 18.5% 2nd half: 6-26 23.1% Game: 11-53 20.8% Deadball Rebounds 5
3FG % 1st Half: 0-4 0.0% 2nd half: 1-6 16.7% Game: 1-10 10.0%
FT % 1st Half: 5-7 71.4% 2nd half: 6-12 50.0% Game: 11-19 57.9%

Officials: Charles Gonzalez, Clarke Stevens, Tiffany Bird
Technical fouls: Stanford-None. Arizona-None.
Attendance: 1491

Score by periods	1st	2nd	3rd	4th	Total
Stanford	20	19	11	9	59
Arizona	8	7	7	12	34

Last FG - STAN 4th-03:35, ARIZ 4th-00:39.
Largest lead - STAN by 32 4th-06:17, ARIZ None.

Score tied - 0 times.
Lead changed - 0 times.

Official Basketball Box Score -- Game Totals -- Final Statistics

California vs Arizona
1/4/16 8 p.m. at McKale Center**California 52 • 9-4**

#	Player	Total		3-Ptr		Rebounds		PF	TP	A	TO	Blk	Stl	Min
		FG-FGA	FG-FGA	FT-FTA	Off Def Tot	PF	TP							
03	Cowling, Mikayla	f	2-5	0-2	1-3	1 4 5	3	5	6	4	1	0	37	37
24	Range, Courtney	f	7-15	4-10	0-0	1 4 5	4	18	1	2	3	1	33	33
31	Anigwe, Kristine	f	8-11	0-0	3-6	3 7 10	3	19	2	2	4	1	38	38
01	Thomas, Asha	g	1-9	1-6	0-0	1 3 4	0	3	4	2	0	2	35	35
33	Green, Gabby	g	0-7	0-6	0-0	0 1 1	2	0	3	1	0	3	29	29
12	Davidson, Penina		2-2	1-1	0-0	0 4 4	2	5	0	2	1	0	16	16
20	Mosley, MaAne		0-3	0-1	0-0	0 1 1	1	0	0	0	0	0	8	8
44	Waters, KC		1-1	0-0	0-0	0 0 0	0	2	0	0	0	0	4	4
	Team				1 1 2									
	Totals		21-53	6-26	4-9	7 25 32	15	52	16	13	9	7	200	200

FG % 1st Half: 11-22 50.0% 2nd half: 10-31 32.3% Game: 21-53 39.6% Deadball Rebounds 2
3FG % 1st Half: 3-10 30.0% 2nd half: 3-16 18.8% Game: 6-26 23.1%
FT % 1st Half: 2-5 40.0% 2nd half: 2-4 50.0% Game: 4-9 44.4%

Arizona 57 • 10-4

#	Player	Total		3-Ptr		Rebounds		PF	TP	A	TO	Blk	Stl	Min
		FG-FGA	FG-FGA	FT-FTA	Off Def Tot	PF	TP							
21	GRAHAM, Destiny	f	1-3	0-0	0-0	1 1 2	2	2	0	0	0	0	12	12
24	JONES, LaBrittney	f	2-10	0-0	5-5	4 6 10	2	9	3	2	1	2	33	33
03	GRIFFEY, Taryn	g	4-8	1-4	2-2	0 0 0	0	11	0	2	0	1	20	20
15	CANNON, Keyahndra	g	0-1	0-0	0-0	0 0 0	1	0	0	1	0	0	12	12
33	BENNETT, JaLea	g	2-8	1-1	0-0	1 4 5	1	5	2	3	1	1	26	26
10	EVANS, Lauren		1-6	0-0	2-2	0 2 2	2	4	1	0	0	2	18	18
14	WASHINGTON, Malena		3-15	1-8	3-4	1 5 6	0	10	3	2	0	1	26	26
20	BELL, Farrin		2-3	0-0	0-0	1 0 1	1	4	2	0	0	0	15	15
23	MILLER, Michal		1-1	1-1	0-0	0 0 0	0	3	0	1	0	0	2	2
31	JAMES, Dejza		3-5	0-0	1-1	3 5 8	2	7	0	1	0	1	23	23
42	COLEMAN, A'Shanti		1-4	0-0	0-0	1 2 3	1	2	0	0	0	1	13	13
	Team				7 3 10					1				
	Totals		20-64	4-14	13-14	19 28 47	12	57	11	13	2	9	200	200

FG % 1st Half: 7-33 21.2% 2nd half: 13-31 41.9% Game: 20-64 31.3% Deadball Rebounds 1
3FG % 1st Half: 2-9 22.2% 2nd half: 2-5 40.0% Game: 4-14 28.6%
FT % 1st Half: 6-6 100.0 2nd half: 7-8 87.5% Game: 13-14 92.9%

Officials: Anita Ortega, Darren Krzesnik, Rochelle Bennett
Technical fouls: California-None. Arizona-None.
Attendance: 728

Score by periods	1st	2nd	3rd	4th	Total
California	11	16	12	13	52
Arizona	12	10	16	19	57

Points In Off 2nd Fast
CAL Paint T/O Chance Break Bench
ARIZ 28 9 11 4 30

Last FG - CAL 4th-00:18, ARIZ 4th-02:50.
Largest lead - CAL by 8 3rd-09:57, ARIZ by 4 4th-00:03.

Score tied - 9 times.
Lead changed - 9 times.

Official Basketball Box Score -- Game Totals -- Final Statistics**Arizona vs Washington State**
1/8/16 7 p.m. at Pullman, Wash. (Beasley Coliseum)**Arizona 46 • 10-5, 1-2 Pac-12**

#	Player	Total		3-Ptr		Rebounds		PF	TP	A	TO	Blk	Stl	Min
		FG-FGA	FG-FGA	FT-FTA	Off Def Tot	PF	TP							
21	Graham, Destiny	f	4-6	0-0	3-3	2 1 3	1	11	0	2	0	0	20	20
24	Jones, LaBrittney	f	3-7	0-0	3-4	2 4 6	2	9	2	2	1	0	31	31
14	Washington, Malena	g	1-7	0-2	0-0	0 1 1	2	2	3	3	0	0	21	21
15	Cannon, Keyahndra	g	1-2	0-0	0-0	1 2 3	1	2	1	3	0	0	24	24
33	Bennett, Jalea	g	3-9	0-3	0-0	2 1 3	1	6	2	3	0	1	21	21
00	Workman, Breanna		1-1	0-0	0-0	1 1 2	0	2	1	1	0	0	14	14
03	Griffey, Taryn		2-6	1-2	0-0	1 2 3	1	5	0	3	0	0	15	15
10	Evans, Lauren		0-2	0-0	1-2	0 2 2	1	1	1	2	0	0	16	16
20	Bell, Farrin		1-4	0-0	0-1	0 1 1	0	2	1	3	0	1	14	14
23	Miller, Michal		0-1	0-0	2-4	0 0 0	1	2	1	0	0	1	9	9
31	James, Dejza		2-3	0-1	0-0	1 2 3	2	4	0	0	0	0	10	10
42	Coleman, A'Shanti		0-0	0-0	0-0	0 0 0	1	0	0	2	0	1	5	5
	Team				3 4 7									
	Totals		18-48	1-8	9-14	13 21 34	13	46	12	24	1	4	200	200

FG % 1st Half: 10-25 48.0% 2nd half: 6-23 26.1% Game: 18-48 37.5% Deadball Rebounds 3
3FG % 1st Half: 0-3 0.0% 2nd half: 1-5 20.0% Game: 1-8 12.5%
FT % 1st Half: 2-6 33.3% 2nd half: 7-8 87.5% Game: 9-14 64.3%

Washington State 67 • 11-4, 2-2 Pac-12

#	Player		Total		3-Ptr		Rebounds			PF	TP	A	TO	Blk	Stl	Min
			FG-FGA	FT-FTA	FG-FGA	FT-FTA	Off	Def	Tot							
04	Brown, Louise	f	1-5	0-1	0-0	0	1	1	2	2	0	1	2	17		
45	Hristova, Borislava	f	7-16	0-4	0-0	2	2	4	2	14	2	3	0	2	25	
24	Blanu, Bianca	c	1-2	0-0	0-0	3	0	3	2	2	0	3	0	1	8	
01	Halley, Calla	g	1-3	0-0	3-4	1	1	2	4	5	1	1	0	1	10	
11	Awa, Dawnielle	g	0-3	0-2	1-2	0	0	0	0	1	1	1	0	2	17	
02	McKenzie, Kyrstie		0-0	0-0	0-0	0	0	0	0	0	0	0	0	1	4	
10	Williamson, Alexas		0-0	0-0	0-0	0	0	0	0	0	0	0	0	0	7	
12	Edmondson, Taylor		1-6	0-3	1-2	2	2	4	0	3	1	0	0	2	22	
15	Kmetovska, Ivana		1-2	0-0	5-8	2	0	2	2	7	2	0	0	1	11	
20	Kostourkova, Maria		2-3	0-0	0-0	1	1	2	4	4	0	0	1	1	10	
21	McClure, Nike		1-2	0-0	0-0	2	3	5	3	2	0	1	1	0	11	
22	Pavlopoulou, Pinelop		2-5	0-2	0-0	1	3	4	1	4	3	0	0	2	19	
23	Swedlund, Alexys		3-8	2-6	0-0	0	0	0	2	8	1	2	0	0	16	
34	Cooks, Mariah		6-10	2-4	1-2	4	5	9	0	15	1	2	0	2	23	
	Team					2	0	2				1				
Totals			26-65	4-22	11-18	21	17	38	21	67	14	14	3	17	200	

Official Basketball Box Score -- Game Totals -- Final Statistics

Utah vs Arizona

01/15/16 7 p.m. at McKale Center

Utah 60 • 12-4

#	Player		Total		3-Ptr	Rebounds			PF	TP	A TO Blk Stl				Min	
			FG-FGA	FG-FGA		FT-FTA	Off	Def			Tot	A	TO	Blk		Stl
03	Nawahine, Malia	f	2-10	1-5	0-0	2	3	5	3	5	3	3	0	1	31	
12	Potter, Emily	f	5-13	0-0	4-6	3	9	12	4	14	1	4	1	0	17	
32	Bocclair, Tanaeya	f	2-5	0-1	2-2	3	3	6	0	6	1	4	1	0	28	
14	Crozon, Paige	g	2-10	0-3	6-8	3	7	10	4	10	1	2	1	2	32	
22	Rodriguez, Danielle	g	4-8	1-1	2-3	1	4	5	1	11	5	2	1	2	37	
01	Bowie, Gabrielle		0-0	0-0	0-0	0	0	0	0	0	0	0	0	0	2	
11	Bean, Erika		0-0	0-0	0-0	0	0	0	0	0	0	1	0	0	3	
13	Owens, Devri		0-3	0-3	0-0	0	1	1	1	0	0	1	0	0	8	
20	Kuklok, Katie		3-3	2-2	3-3	0	3	3	0	11	0	2	0	1	19	
33	Fatuseta, Joeseta		1-3	0-0	1-2	2	5	7	2	3	1	3	0	1	23	
Team						1	1	2								
Totals				19-55	4-15	18-24	15	36	51	15	60	12	22	4	7	200
FG % 1st Half: 12-26			46.2%	2nd half: 7-29		24.1%	Game: 19-55		34.5%	Deadball Rebounds						
3FG % 1st Half: 3-10			30.0%	2nd half: 1-5		20.0%	Game: 4-15		26.7%							
FT % 1st Half: 10-12			83.3%	2nd half: 8-12		66.7%	Game: 18-24		75.0%							

Arizona 55 • 10-7

#	Player	Total		3-Ptr	Rebounds			PF	TP	A TO Blk Stl				Min	
		FG-FGA	FG-FGA	FT-FTA	Off	Def	Tot			A	TO	Blk	Stl		
00	WORKMAN, Breanna	f	0-4	0-0	2-4	0	0	0	1	2	2	2	0	1	27
24	JONES, LaBrittney	f	8-19	2-3	1-3	1	6	7	4	19	1	0	2	3	34
14	WASHINGTON, Malena	g	6-15	2-5	1-1	2	0	2	1	15	5	3	1	2	30
15	CANNON, Keyahndra	g	3-7	0-0	0-0	0	3	3	2	6	2	1	0	1	24
33	BENNETT, JaLea	g	1-6	0-1	0-0	0	2	2	2	2	1	1	1	0	24
03	GRIFFEY, Taryn	g	0-5	0-3	0-0	1	2	3	2	0	0	0	0	0	7
10	EVANS, Lauren	g	1-1	0-0	0-0	1	5	6	0	2	0	2	0	0	9
20	BELL, Farrin	g	1-3	0-0	0-0	2	1	3	0	2	2	1	0	0	20
21	GRAHAM, Destiny	g	3-4	0-0	0-0	2	2	4	3	6	1	2	0	0	11
23	MILLER, Michal	g	0-4	0-3	1-2	0	1	1	1	1	1	0	0	0	11
42	COLEMAN, A'Shanti	g	0-0	0-0	0-0	0	0	0	0	0	0	0	0	0	3
Team						1	1	2							
Totals			23-68	4-15	5-10	10	23	33	16	55	15	12	4	8	200
FG % 1st Half: 13-34		38.2%	2nd half: 10-34		29.4%	Game: 23-68		33.8%	Deadball Rebounds						
3FG % 1st Half: 1-5		20.0%	2nd half: 3-10		30.0%	Game: 4-15		26.7%	4						
FT % 1st Half: 4-7		57.1%	2nd half: 1-3		33.3%	Game: 5-10		50.0%							

Officials: Michael Price, Ifeyinwa Seales, Lorena Ahumada

Technical fouls: Utah-None. Arizona-None.

Attendance: 1022

Score by periods											
1st	2nd	3rd	4th	Total		In	Off	2nd	Fast	Deadball	
Utah	23	14	12	11	60	Points	Paint	T/O	Chance	Break	Bench
Arizona	12	19	12	12	55	UTAH	26	13	10	14	14
						ARIZ	18	17	12	4	11

Last FG - UTAH 4th-03:01, ARIZ 4th-01:10.

Largest lead - UTAH by 14 1st-01:13, ARIZ None.

UTAH led for 39:50. ARIZ led for 00:00. Game was tied for 00:10.

Score tied - 0 times.

Lead changed - 0 times.

Official Basketball Box Score -- Game Totals -- Final Statistics

Arizona vs Arizona State

1/22/16 7:02 pm MT at Wells Fargo Arena (Tempe,Ariz.)

Arizona 49 • 11-8,2-5 P12

#	Player	Total				3-Ptr			Rebounds			PF	TP	A TO Blk Stl				Min
		FG-FGA	FG-FGA	FG-FGA	FT-FTA	Off	Def	Tot	A	TO	Blk			Stl				
00	WORKMAN, Breanna	f	5-7	0-0	3-4	2	5	7	5	13	2	3	0	1	25			
24	JONES, LaBrittney	f	3-8	2-2	0-1	2	2	4	4	8	1	3	0	0	30			
14	WASHINGTON, Malena	g	5-12	1-5	3-4	0	1	1	2	14	7	3	0	0	30			
15	CANNON, Keyahndra	g	3-4	0-0	0-0	0	4	4	1	6	0	4	0	0	24			
33	BENNETT, JaLea	g	1-3	0-0	0-0	2	4	6	2	2	0	4	0	1	29			
10	EVANS, Lauren	g	1-1	0-0	0-0	0	2	2	0	2	0	5	0	0	16			
20	BELL, Farrin	g	0-1	0-0	0-0	1	0	1	1	0	0	4	0	0	10			
21	GRAHAM, Destiny	g	1-1	0-0	0-0	0	2	2	1	2	0	0	0	0	16			
23	MILLER, Michal	g	1-2	0-0	0-0	1	0	1	0	2	0	0	0	1	11			
42	COLEMAN, A'Shanti	g	0-1	0-0	0-0	0	1	1	3	0	0	1	0	0	9			
Team						1	5	6										
Totals			20-40	3-7	6-9	9	26	35	19	49	10	27	0	3	200			
FG % 1st Half: 11-20		55.0%	2nd half: 9-20		45.0%	Game: 20-40		50.0%	Deadball Rebounds									
3FG % 1st Half: 1-3		33.3%	2nd half: 2-4		50.0%	Game: 3-7		42.9%										
FT % 1st Half: 3-5		60.0%	2nd half: 3-4		75.0%	Game: 6-9		66.7%										
											1							

Arizona State 61 • 16-3,7-0 P12

#	Player		Total			3-Ptr	Rebounds			PF	TP	A TO Blk Stl				Min
			FG-FGA	FG-FGA	FT-FTA		Off	Def	Tot			A	TO	Blk	Stl	
21	Brunner, Sophie	f	6-10	0-0	3-5	2	3	5	2	15	0	3	0	7	31	
24	Moos, Kelsey	f	2-4	0-2	2-2	2	2	4	0	6	1	1	0	1	26	
22	Dornstauder, Quinn	c	2-6	0-0	0-0	0	1	1	0	4	0	0	1	1	19	
00	Hempen, Katie	g	0-6	0-5	0-0	0	0	0	4	0	4	1	0	0	21	
23	Davis, Elisha	g	5-7	3-5	3-4	0	3	3	3	16	5	2	0	5	31	
01	Hawkins, Arneicia	g	2-6	2-4	0-0	0	1	1	3	6	2	2	0	1	15	
03	Haines, Sabrina	g	2-5	0-1	2-2	1	2	3	1	6	4	0	0	1	28	
11	Amukamara, Peace	g	1-3	1-2	0-0	0	0	0	1	3	2	1	0	1	13	
42	Ibis, Kianna	g	1-3	0-0	1-2	2	0	2	1	3	0	1	0	0	11	
43	Normen, Eliza	g	1-1	0-0	0-0	0	1	1	0	2	0	1	0	0	5	
Team						0	0	0								
Totals			22-51	6-19	11-15	7	13	20	15	61	18	13	1	17	200	
FG % 1st Half: 11-26			42.3%	2nd half: 11-25		44.0%	Game: 22-51		43.1%	Deadball Rebounds						
3FG % 1st Half: 3-10			30.0%	2nd half: 3-9		33.3%	Game: 6-19		31.6%							
FT % 1st Half: 1-1			100.0%	2nd half: 10-14		71.4%	Game: 11-15		73.3%							

Officials: Roy Gulbeyan, Cameron Inouye, Tiffany Bird

Technical fouls: Arizona-None. Arizona State-None.

Attendance: 3455

Score by periods											
1st	2nd	3rd	4th	Total		In	Off	2nd	Fast	Deadball	
Arizona	18	8	14	9	49	Points	Paint	T/O	Chance	Break	Bench
Arizona State	17	9	21	14	61	ARIZ	26	28	7	4	20
						ASU	22	9	9	2	6

Last FG - ARIZ 4th-00:11, ASU 4th-01:00.

Largest lead - ARIZ by 4 1st-00:37, ASU by 18 4th-01:00.

ARIZ led for 04:32. ASU led for 26:19. Game was tied for 09:09.

Score tied - 6 times.

Lead changed - 4 times.

Official Basketball Box Score -- Game Totals -- Final Statistics

Colorado vs Arizona

01/17/16 2 p.m. at McKale Center

Colorado 52 • 5-12

#	Player		Total		3-Ptr	Rebounds					PF	TP	A	TO	Blk	Stl	Min
			FG-FA	FG-FGA		FT-FTA	Off	Def	Tot								
22	Smith, Haley	f	4-8	2-2	0-0	4	1	5	4	10	1	2	0	0	0	26	
24	Huggins, Lauren	f	5-7	5-7	0-0	0	2	2	3	15	0	0	0	0	0	34	
15	Correal, Zoe	c	0-2	0-0	0-0	0	2	2	2	0	0	2	1	0	11		
02	Robinson, Alexis	g	2-10	1-2	0-0	2	1	3	3	5	1	1	0	1	24		
14	Leonard, Kennedy	g	3-11	0-3	6-8	0	1	1	3	12	6	5	1	2	37		
01	Ellis, Mackenzie		1-2	0-0	0-0	1	1	2	0	2	1	0	0	0	11		
13	Thomas, Brecca		0-2	0-0	0-0	0	0	0	1	0	1	0	0	0	13		
31	Beard-Fails, Zoe		2-4	0-0	2-2	2	4	6	2	6	0	0	2	0	14		
50	Swan, Jamee		0-11	0-0	2-2	1	7	8	3	2	2	2	1	1	30		
Team						3	1	4					1				
Totals			17-57	8-14	10-12	13	20	33	21	52	12	13	5	4	200		
FG % 1st Half: 6-28			21.4%	2nd half: 11-29	37.9%	Game: 17-57			29.8%	Deadball Rebounds							
3FG % 1st Half: 4-7			57.1%	2nd half: 4-7	57.1%	Game: 10-14			57.1%	1							
FT % 1st Half: 6-8			75.0%	2nd half: 4-4	100.0	Game: 10-12			83.3%								



Official Basketball Box Score -- Game Totals -- Final Statistics

Arizona vs Oregon State
1/29/16 6 p.m. at Gill Coliseum (Corvallis, Ore.)**Arizona 43 • 11-10, 2-7 Pac-12**

#	Player	Total		3-Ptr		Rebounds			PF	TP	A	TO	Blk	Stl	Min
		FG-FGA	FG-FGA	FT-FTA	FT-FTA	Off	Def	Tot							
00	WORKMAN, Breanna	f	1-7	0-0	1-2	1	2	3	3	3	1	2	0	0	20
24	JONES, LaBrittney	f	3-8	1-3	3-5	0	1	1	2	10	1	3	1	1	28
14	WASHINGTON, Malena	g	4-12	0-1	0-0	1	3	4	0	8	2	1	0	0	25
15	CANNON, Keyahndra	g	0-1	0-0	0-0	0	2	2	1	0	0	0	0	0	12
33	BENNETT, JaLea	g	0-7	0-0	4-4	1	1	2	2	4	1	0	0	0	23
10	EVANS, Lauren		1-1	0-0	0-0	3	0	3	1	2	0	2	0	0	25
20	BELL, Farrin		1-3	0-0	0-0	0	6	6	0	2	2	1	1	1	15
21	GRAHAM, Destiny		3-5	0-0	1-2	0	2	2	1	7	0	1	0	0	15
23	MILLER, Michal		1-5	0-1	1-2	0	2	2	1	3	1	1	0	0	22
42	COLEMAN, A'Shanti		2-5	0-0	0-0	0	1	1	1	4	0	0	0	0	15
Team						3	3	6							
Totals			16-54	1-5	10-15	9	23	32	12	43	8	11	2	6	200
FG % 1st Half: 8-27 29.6% 2nd half: 8-27 29.6% Game: 16-54 29.6%															
3FG % 1st Half: 0-0 0.0% 2nd half: 1-5 20.0% Game: 1-5 20.0%															
FT % 1st Half: 3-4 75.0% 2nd half: 7-11 63.6% Game: 10-15 66.7%															
Deadball Rebounds 1															

Oregon State 71 • 17-3, 8-1 Pac-12

#	Player	Total		3-Ptr		Rebounds			PF	TP	A	TO	Blk	Stl	Min
		FG-FGA	FG-FGA	FT-FTA	FT-FTA	Off	Def	Tot							
32	Hunter, Deven	f	4-6	2-2	2-2	3	6	9	2	12	5	2	0	0	25
44	Hamblin, Ruth	c	5-10	0-0	2-3	4	0	4	3	12	0	1	1	0	17
10	McWilliams, Katie	g	2-6	2-4	0-0	0	4	4	1	6	2	0	0	0	29
11	Hanson, Gabriella	g	4-10	0-2	0-0	1	2	3	0	8	1	2	1	2	27
24	Wiese, Sydney	g	5-12	3-6	2-2	0	11	11	2	15	7	2	0	1	32
04	Brown, Breanna		0-1	0-0	1-2	0	1	1	0	1	0	0	1	0	6
05	Siegner, Samantha		2-3	0-1	0-0	0	2	2	1	4	0	1	0	0	13
12	Orum, Kolbie		0-1	0-0	1-2	0	2	2	1	1	0	1	0	0	12
21	Gulich, Marie		1-2	0-0	0-0	2	3	5	2	2	0	0	1	1	17
22	Hill, Jen/Von'Ta		1-1	0-0	0-0	0	0	0	0	2	0	1	0	0	5
25	Kalmer, Taylor		3-6	2-3	0-0	0	0	0	0	8	2	1	0	0	17
Team						1	2	3							
Totals			27-58	9-18	8-11	11	33	44	12	71	17	11	4	7	200
FG % 1st Half: 19-33 57.6% 2nd half: 8-25 32.0% Game: 27-58 46.6%															
3FG % 1st Half: 7-12 58.3% 2nd half: 2-6 33.3% Game: 9-18 50.0%															
FT % 1st Half: 2-2 100.0% 2nd half: 6-9 66.7% Game: 8-11 72.7%															
Deadball Rebounds 0															

Officials: Rick Showers, Anita Ortega, Alejandro Moreno

Technical fouls: Arizona-None. Oregon State-None.

Attendance: 3402

Score by periods	1st	2nd	3rd	4th	Total
Arizona	12	7	11	13	43
Oregon State	23	24	9	15	71

	In Paint	Off T/O	2nd Chance	Fast Break	Bench
Points ARIZ	14	8	2	2	18
Points OSU	30	10	10	0	18

Last FG - ARIZ 4th-00:52, OSU 4th-00:52.

Largest lead - ARIZ None, OSU by 32 3rd-05:49.

Score tied - 2 times.
Lead changed - 0 times.**Official Basketball Box Score -- Game Totals -- Final Statistics**
Arizona vs Oregon**1/31/16 12:02 PM at Eugene, Ore. (Matthew Knight Arena)****Arizona 54 • 11-11, 2-7 P12**

#	Player	Total		3-Ptr		Rebounds			PF	TP	A	TO	Blk	Stl	Min
		FG-FGA	FG-FGA	FT-FTA	FT-FTA	Off	Def	Tot							
00	WORKMAN, Breanna	f	3-3	0-0	0-0	0	4	4	1	6	0	5	0	0	29
24	JONES, LaBrittney	f	5-13	2-3	2-2	2	1	3	4	14	0	1	0	0	20
14	WASHINGTON, Malena	g	9-15	3-8	2-2	0	2	2	2	23	2	4	0	2	31
15	CANNON, Keyahndra	g	0-1	0-0	0-0	0	1	1	0	0	3	0	1	0	14
33	BENNETT, JaLea	g	1-5	0-2	0-0	1	2	3	1	2	1	1	1	0	24
10	EVANS, Lauren	g	1-3	0-0	0-0	0	1	1	1	2	1	3	0	0	26
20	BELL, Farrin		0-2	0-0	0-0	2	0	2	0	2	0	1	3	0	20
21	GRAHAM, Destiny		0-1	0-0	0-0	0	2	2	0	0	0	0	0	1	13
23	MILLER, Michal		2-7	1-3	0-0	0	1	1	3	5	2	0	0	0	18
42	COLEMAN, A'Shanti		1-1	0-0	0-0	0	0	0	0	2	0	0	0	0	5
Team						3	0	3							
Totals			22-51	6-16	4-4	8	14	22	18	54	10	17	2	3	200
FG % 1st Half: 11-23 47.8% 2nd half: 11-28 39.3% Game: 22-51 43.1%															
3FG % 1st Half: 2-4 50.0% 2nd half: 4-12 33.3% Game: 6-16 37.5%															
FT % 1st Half: 2-2 100.0% 2nd half: 2-2 100.0% Game: 4-4 100.0%															
Deadball Rebounds 2															

Oregon 76 • 15-6, 4-6 P12

#	Player	Total		3-Ptr		Rebounds			PF	TP	A	TO	Blk	Stl	Min
		FG-FGA	FG-FGA	FT-FTA	FT-FTA	Off	Def	Tot							
14	Alleyne, Jillian	f	8-10	0-0	2-2	4	6	10	2	18	3	2	2	1	35
44	Cooper, Kat	f	6-10	6-9	0-0	0	2	2	2	18	2	0	0	0	29
04	Cazorla, Maite	g	8-11	1-2	6-6	1	2	3	1	23	7	5	0	4	35
05	Loera, Jordan	g	0-4	0-4	0-0	1	1	2	1	0	2	1	0	1	32
10	Bando, Lexi	g	2-7	2-4	2-3	0	2	2	4	8	0	1	0	0	29
13	Moore, Mar'Shay		2-4	0-2	0-0	1	0	1	1	4	0	0	0	1	16
22	Yearwood, Lauren		1-3	0-0	0-0	1	1	2	2	2	0	1	0	0	12
32	Gildon, Oti		1-1	0-0	1-2	0	1	1	1	3	0	1	0	0	10
51	Gruys, Katie		0-0	0-0	0-0	0	0	0	0	0	0	0	0	0	2
Team						0	2	2							
Totals			28-50	9-21	11-13	8	17	25	14	76	14	11	2	7	200
FG % 1st Half: 11-25 44.0% 2nd half: 17-25 68.0% Game: 28-50 56.0%															
3FG % 1st Half: 5-11 45.5% 2nd half: 4-10 40.0% Game: 9-21 42.9%															
FT % 1st Half: 10-11 90.9% 2nd half: 1-2 50.0% Game: 11-13 84.6%															
Deadball Rebounds 2,2															

Officials: Penny Davis, Shelley Nakasone, Alecia Murray

Technical fouls: Arizona-None. Oregon-None.

Attendance: 2301

Score by periods	1st	2nd	3rd	4th	Total
Arizona	17	9	12	16	54
Oregon	18	19	19	20	76

	In Paint	Off T/O	2nd Chance	Fast Break	Bench
Points ARIZ	20	6	2	9	
Points ORE	36	24	9	0	9

Last FG - ARIZ 4th-00:09, ORE 4th-00:45.

Largest lead - ARIZ by 6 1st-01:15, ORE by 28 4th-03:11.

ARIZ led for 09:47. ORE led for 29:17. Game was tied for 00:56.

Score tied - 2 times.
Lead changed - 5 times.**Official Basketball Box Score -- Game Totals -- Final Statistics**
USC vs Arizona**02/05/16 8 p.m. at McKale Center****USC 67 • 17-6**

#	Player		Total		3-Ptr		Rebounds			PF	TP	A	TO	Blk	Stl	Min
			FG-FGA	FG-FGA	FT-FTA	Off	Def	Tot								
35	Simon, Kristen	f	4-14	0-0	0-0	2	6	8	4	8	0	4	1	1	31	
41	Fagbenlie, Temi	f	5-7	0-0	6-8	1	8	9	4	16	2	2	2	5	30	
10	Jaco, Courtney	g	8-14	4-8	4-4	1	0	1	3	24	3	2	0	3	40	
14	Edwards, Sadie	g	6-13	0-3	2-5	1	2	3	4	14	2	2	0	1	35	
25	Lloyd, Alexis	g	2-5	0-1	1-2	1	3	4	4	5	2	0	0	1	38	
02	Taito, Khaedin		0-2	0-1	0-2	0	1	1	3	0	0	1	0	1	12	
30	Abejono, Candela		0-2	0-0	0-0	0	1	1	1	0	0	1	0	0	14	
Team						2	2	4								
Totals				4-13	13-21	8	23	31	23	67	9	12	3	12	200	
FG % 1st Half: 13-27			48.1%	2nd half: 12-30	40.0%	Game: 25-57			43.9%	Deadball Rebounds: 4,1						
3FG % 1st Half: 3-9			33.3%	2nd half: 1-4	25.0%	Game: 4-13			30.8%							
FT % 1st Half: 2-4			50.0%	2nd half: 11-17	64.7%	Game: 13-21			61.9%							



LEADS, DEFICITS, RUNS

Opponent	Largest Lead	Largest Deficit	Final Margin	Lead Changes
at Toledo	8	6	+3	6
Howard	40	0	+37	1
at San Diego	0	10	-5	0
Kansas	20	6	+15	9
at North Texas	8	11	+7	1
New Mexico State	4	16	+4	5
Pacific	13	1	+13	10
Louisiana Tech	13	2	+10	1
SMU	5	12	-12	11
Florida Gulf Coast	6	6	-2	5
Gardner-Webb	21	6	+19	3
George Mason	10	0	+8	0
Stanford	0	32	-25	0
California	5	8	+5	9
at Washington State	2	21	-21	3
at Washington	6	20	-16	1
Utah	0	14	-5	0
Colorado	11	6	+11	8
at Arizona State	4	18	-11	4
Arizona State	0	23	-15	0
at Oregon State	0	32	-28	0
at Oregon	6	28	-22	5
USC	5	15	-10	1
UCLA	0	34	-34	0
at California				
at Stanford				
Washington				
Washington State				
at UCLA				
at USC				

() denotes number of ties

Barbara, Grambling State, Southern, UAB, UT-Martin, Oregon, Stanford and Utah. All total, Arizona is 11-7 in its last 18 games at McKale Center.

Fabulous Freshmen

Freshmen Taryn Griffey and Destiny Graham had memorable collegiate debuts in Arizona's 62-59 win over Toledo last week. Griffey had 18 points and was 6 of 10 from the floor. She was 6 of 9 from 3-point distance and led all scorers with her 18 points. It was the most points scored by an Arizona freshmen in a debut since Davellyn Whyte poured in 27 in a 75-70 win over Iona in 2009. Griffey, a redshirt freshman, also had four assists and four rebounds and was nominated for the Pac-12 Freshman of the Week. Graham, a true freshman had two points, nine rebounds, three steals and three assists in the win over the Rockets. The nine rebounds were the most in a freshman debut since current Wildcat LaBrittney Jones pulled down 10 boards in Arizona's 2013-14 season opener against Iona.

The stellar play by the freshmen continued against Howard with even more players getting in on the action. Michal Miller, a true freshman from Michigan City, Ind., hit four of six 3-pointers and finished with 16 points in 14 minutes. Additionally, freshman post player A'Shanti Coleman made her second straight start and had eight points, five rebounds and three steals in 28 minutes. Arizona's four freshmen on the roster, Griffey, Graham, Coleman and Miller should all make an impact in their debut seasons.

Against San Diego, Griffey had five points and three rebounds. Coleman played 15 minutes and Graham saw nine minutes of action. Griffey again scored in double figures against Kansas, pouring in 17. Coleman had a career best four blocks against the Jayhawks and also converted a steal into a fast break layup.

A Valuable Addition

After transferring from Virginia Tech and sitting out last season, Lauren Evans has made her presence felt so far through three games for Arizona. Evans is averaging 22.3 minutes per game and is second on the team with 14 rebounds. She leads the team with eight offensive boards and is tied for the team lead in steals with four. Evans can play both guard and forward and has for the Wildcats this season. Evans' brother, Ryan, played four seasons at Wisconsin from 2008 to 2013.

New Faces Ready for Bright Lights

Coach Niya Butts added four new pieces to this year's roster with her 2015 recruiting class. The group consists of guard Michal Miller, forwards Destiny Graham and A'Shanti Coleman and center Eugenie Simonet-Keller.

Butts on Miller: "She's a very, very hardworking player. You know what you're going

to get from her everyday, and I can certainly respect that. She can score the basketball. She does a good job with that. She has to slow down a bit and make sure she understands the entire game. But she's one of the most coachable kids we have on our team. That with her hard work, she will be an asset for us."

Butts on Graham: "She's been out for two weeks (concussion), but I like what she can do on the floor. She provides us with more size. She has a nice jumper from 15-16 feet out. She's going to add more length on the inside. I'm just looking forward to getting her back on the floor and continuing her development. I'm looking for great things from her as well."

Butts on Coleman: "Ashanti is coming along nicely. She's progressing. She's picking things up slowly, but surely. We need her to get stronger, but I like what she brings to our team. She's extremely long and athletic. I think grasping the speed of the game will really help her and us tremendously. I'm looking forward to seeing her on the floor."

Lights, Camera, Action

Twelve of Arizona's 18 conference games will be televised by Pac-12 Networks this season. Among the scheduled television games: home contests with Stanford, California and Arizona State and road tilts with Oregon State, UCLA and Washington.

About That Schedule

Arizona's nonconference schedule features road games at Toledo, San Diego and North Texas. The Wildcats will make all three trips this month, mixed in with home games against Howard and Kansas. In December, the Wildcats won't play any true road games. Instead, Arizona will travel to San Juan, Puerto Rico for three games in the Puerto Rico Classic. Arizona will play SMU, Florida Gulf Coast and Gardner-Webb. In conference play, Arizona will play Stanford and Arizona

ARIZONA'S WIN-LOSS MARGIN

	1	2	3	4	5	6	7	8	9	10	11	12	13	14	15	16	17	18	19	20-25	26-30	31+
Wins (11)			1	1	1		1	1		1	1		1		1				1			1
Losses (13)		1			2					1		2			1	1				3	1	1



GENERAL INFORMATION

Location:	Tucson, Ariz.
Founded:	1855
Enrollment:	40,200
Nickname:	Wildcats
Colors:	Cardinal and Navy
Affiliation:	NCAA Division I
Conference:	Pac-12 Conference
Arena (Capacity):	McKale Center (14,655)
President:	Dr. Ann Weaver Heart
Athletics Director:	Greg Byrne
NCAA Faculty Representative:	Jory Hancock
Director of Athletics Phone:	(520) 621-4622
Ticket Office Phone:	(520) 621-2287
Web Site:	ArizonaWildcats.com

HISTORY

First Basketball Game:	Feb. 2, 1972 vs. New Mexico (W, 73-36)
All-Time Record:	536 -642 (.455)
All-Time Attendance Record:	6,268 vs. UCSB on 11/25/14
Postseason Appearances:	2011, WNIT 1st Round
NCAA Appearances:	7 ('97, '98, '99, '00, '03, '04, '05)
WNIT Appearances:	4 ('96, 01, '11)
Last Postseason Appearance:	2011, WNIT 1st Round
Last Postseason Opponent:	Utah State (3/17/11)
Last Postseason Result	L, 103-96
All-Time Postseason Record:	10-9
All-Time NCAA Tournament Record	6-7
All-Time WNIT Record:	4-2
Last NCAA Tournament Appearance:	2005, 2nd round
Last NCAA Tournament Opponent:	LSU (3/22/2005)
Last NCAA Tournament Result:	L, 76-43

ARIZONA INACTIVES

State each twice. The Cardinal and Sun Devils are both ranked in the AP Pre-season Top 25. Arizona State is ranked 15th and Stanford is one spot behind at No. 16. Oregon State, ranked 10th in the preseason poll, is on the schedule just once this season. The Wildcats will travel to play the Beavers on Jan. 29.

LBJ or Batman?

While in San Francisco for Pac-12 Media Day, junior forward LaBrittney Jones was asked about her nick name in high school, which was "Batman." Since she's arrived at Arizona, however, Jones has simply gone by "LBJ." By whichever name you prefer, Jones will be a major factor for the Wildcats this season. The Cedar Hill, Texas native poured in a career best 30 points against Oregon last season. Jones scored in double figures in 11 of her last 25 games. The junior has been hobbled by a foot injury and has yet to play this season.

"Gloyd" to Still Have You Around

Alli Gloyd, who started all 30 games last season and averaged 5.1 points per game and 5.3 rebounds a contest, has joined the coaching staff with her playing eligibility exhausted. Gloyd will serve as the Assistant Director of Operations, replacing Nick Incrocci.

Cats Learning Etiquette

For the third straight season, Arizona took part in an etiquette dinner at a local Tucson banquet space. At the dinner, players, coaches, and staff were instructed proper etiquette and social standard when dining at fine restaurants.



2015-16 PAC-12 STANDINGS

	Conference		Overall	
	W	L	W	L
#8/8 Oregon State	11	1	20	3
#9/10 Arizona State	11	1	20	4
#13/14 Stanford	9	3	19	5
#14/16 UCLA	9	3	17	6
RV/Washington	7	5	16	7
Utah	6	6	14	9
RV/Oregon	6	6	17	6
USC	5	7	17	7
Washington State	3	9	12	11
Arizona	2	10	11	13
California	2	10	11	12
Colorado	1	11	6	17

2015-16 PAC-12 PRESEASON COACHES' POLL

1. Oregon State (11) 121
2. Stanford 104
3. Arizona State (1) 102
- T4. UCLA 88
- T4. California 88
6. Washington 68
7. USC 60
8. Oregon 52
9. Colorado 39
10. Washington State 30
11. Utah 23

12. Arizona 17

2015-16 PAC-12 PRESEASON MEDIA POLL

1. Oregon State (23) 287
2. Arizona State (1) 247
3. Stanford 245
4. California 205
5. UCLA 203
6. Washington 167
7. USC 140
8. Oregon 118
9. Colorado 88
10. Washington State 75
11. Utah 61

12. Arizona 36

2015-16 PRESEASON ALL-PAC-12 TEAM

Jillian Alleyne, Oregon, F, Sr.
 Sophie Brunner, Arizona State, Jr.
 Nirra Fields, UCLA, Sr.
 Ruth Hamblin, Oregon State, Sr.
 Kelsey Plum, Washington, Jr.
 Sydney Wiese, Oregon State, Jr.

2015-16 PAC-12 WEEKLY AWARDS

PLAYER OF THE WEEK

Date **Player** **Team** **Year**

Nov. 16..... Courtney Range..... Cal Jr.
 Nov. 23..... Jordin Canada..... UCLA So.
 Nov. 30..... Lili Thompson Stanford Jr.
 Dec. 7 Jillian Alleyne Oregon Sr.
 Dec. 14..... Emily Potter Utah..... So.
 Dec. 21..... Lili Thompson Stanford Jr.
 Dec. 28..... Arnetia Hawkins..... Arizona St..... Sr.
 Jan. 4 Nirra Fields..... UCLA Sr.
 Jan. 11..... Temi Fagbenle USC Sr.
 Jan. 18..... Kelsey Plum Washington Jr.
 Jan. 25..... Jillian Alleyne Oregon Sr.
 Feb. 1 Lili Thompson Stanford Jr.
 Feb. 8..... Jamie Weisner..... Oregon St..... Sr.

FRESHMAN OF THE WEEK

Date **Player** **Team** **Year**

Nov. 16..... Kristine Anigwe..... Cal Fr.
 Nov. 23..... Borislava Hristova..... Wazzu..... Fr.
 Nov. 30..... Kristine Anigwe..... Cal Fr.
 Dec. 7 Kristine Anigwe..... Cal Fr.
 Dec. 14..... Kristine Anigwe..... Cal Fr.
 Dec. 21..... Maite Cazorla Oregon Fr.
 Dec. 28..... Kristine Anigwe..... Cal Fr.
 Jan. 4 Kristine Anigwe..... Cal Fr.
 Jan. 11..... Kristine Anigwe..... Cal Fr.
 Jan. 18..... Borislava Hristova..... Wazzu..... Fr.
 Jan. 25..... Borislava Hristova..... Wazzu..... Fr.
 Feb. 1 Maite Cazorla Oregon Fr.
 Feb. 8..... Maite Cazorla Oregon Fr.



2015-16 MISCELLANEOUS STATS

Opponent	Points in the Paint	Margin	Turnovers	Points Off Turnovers	Margin	Offensive Rebounds	Second Chance Points	Margin	Bench Points	Margin	Final Score	Margin
N14 at Toledo	18-26	-8	16-15	15-15	even	14-12	5-13	-8	27-26	+1	62-59	+3
N18 vs. Howard	20-8	+12	19-30	28-9	+19	13-11	17-6	+11	26-6	+20	65-28	+37
N21 at San Diego	8-10	-2	16-15	14-10	-4	12-12	2-15	-13	29-9	+20	54-59	-5
N23 Kansas	30-24	+6	14-17	17-12	+5	15-13	12-9	+3	31-11	+20	67-52	+15
N30 at North Texas	18-12	+6	24-26	24-17	+7	5-12	0-9	-9	16-3	+13	51-44	+7
D2 vs. New Mexico St.	36-24	+12	22-22	23-15	+8	11-5	16-2	+14	32-13	+19	68-64	+4
D5 vs. Pacific	29-24	+5	14-19	18-9	+9	9-14	4-13	-9	40-25	+15	69-56	+13
D10 vs. La. Tech	48-20	+28	16-18	15-19	-4	17-10	22-12	+10	44-18	+26	77-67	+10
D19 vs. SMU	16-22	-6	18-13	15-21	-6	14-18	14-15	-1	21-2	+19	46-58	-12
D20 vs. Florida Gulf Coast	28-30	-2	21-9	5-20	-15	13-9	4-11	-7	25-17	+8	55-57	-2
D21 vs. Gardner-Webb	26-20	+6	17-20	22-11	+11	19-8	19-5	+14	35-9	+26	79-60	+19
D29 vs. George Mason	18-28	-10	17-20	16-16	even	19-17	13-16	-3	22-24	-2	68-60	+8
J2 vs. Stanford	12-18	-6	13-23	11-8	+3	13-13	7-5	+2	20-44	-24	34-59	-25
J4 vs. Cal	28-30	-2	13-13	9-9	even	19-7	11-3	+8	30-7	+23	57-52	+5
J8 at Washington State	28-30	-2	24-14	8-18	-10	13-21	10-25	-15	16-43	-27	46-67	-21
J10 at Washington	20-30	-10	14-17	2-11	-9	13-8	3-9	-6	20-7	+13	47-63	-16
J15 vs. Utah	18-26	-8	12-22	17-13	+4	10-15	12-10	+2	11-14	-3	55-60	-5
J17 vs. Colorado	34-8	+16	12-13	15-11	+4	10-13	12-9	+3	12-10	+2	63-52	+11
J22 at Arizona State	26-22	+4	27-13	9-28	-19	9-7	9-7	+2	6-20	-14	49-61	-12
J24 Arizona State	30-22	+8	14-16	20-11	+9	5-13	1-15	-14	5-26	-21	47-62	-15
J29 at Oregon State	14-30	-16	11-11	8-10	-2	9-11	2-10	-8	18-18	even	43-71	-28
J31 at Oregon	20-36	-16	17-11	10-24	-14	8-8	6-9	-3	9-9	even	54-76	-22
F5 USC	30-30	even	21-12	12-23	-11	16-8	9-6	+3	16-0	+16	57-67	-10
F7 UCLA	22-28	-6	25-20	17-24	-7	12-14	5-19	-14	5-32	-27	39-73	-34
OVERALL	458-458	even	380-357	350-364	-14	262-261	215-253	-38	506-393	+113	1352-1427	-4175

Stats listed in order of Arizona-Opponents

WILDCATS BY STARTING LINEUP in 2015-16

Guard	Guard	Guard	Forward	Center	Times	Record
Taryn Griffey	Keyahndra Cannon	JaLea Bennett	A'Shanti Coleman	Breanna Workman	9	6-3
Malena Washington	Keyahndra Cannon	JaLea Bennett	Breanna Workman	LaBrittney Jones	8	1-7
Taryn Griffey	Keyahndra Cannon	JaLea Bennett	Destiny Graham	LaBrittney Jones	4	2-2
Farrin Bell	Keyahndra Cannon	JaLea Bennett	A'Shanti Coleman	Breanna Workman	1	1-0
Taryn Griffey	Keyahndra Cannon	JaLea Bennett	A'Shanti Coleman	Dejza James	1	1-0
Malena Washington	Keyahndra Cannon	JaLea Bennett	Destiny Graham	LaBrittney Jones	1	0-1

STATISTICAL GAMES (15-16)

DOUBLE-DIGIT SCORING

Player	Games
Keyahndra Cannon	2
A'Shanti Coleman	1
Lauren Evans	1
Farrin Bell	1
Michal Miller	1
Malena Washington	14
LaBrittney Jones	10
Taryn Griffey	6
Breanna Workman	6
JaLea Bennett	4
Destiny Graham	2
Dejza James	2

DOUBLE-DIGIT REBOUNDING

Player	Games
Dejza James	2
LaBrittney Jones	2
Lauren Evans	1

DOUBLE-DOUBLES

Player	No. (Career)
LaBrittney Jones	1 (2)

20-POINT GAMES

Player	Games (Career)
Malena Washington	2(2)
Taryn Griffey	1 (1)



Niya BUTTS

HEAD COACH

Eighth YEAR | TENNESSEE, '00

Entering her eighth season at the helm of the Wildcat program, women's basketball head coach Niya Butts is more energized and driven than ever to continue to build on the strong tradition of Arizona women's basketball and to take the program to new heights. With another strong recruiting class and an experienced and motivated group of veterans, the 2015-16 season is poised to be a successful stop on the road to greatness. One of the most sought after young coaches in the country, Arizona named Butts its new women's basketball head coach on April 3, 2008, ushering in a new era of Wildcat women's basketball. She is the eighth head coach in the program's history and the first African American female head coach at the University of Arizona.

In five seasons, Butts has achieved a number of milestones early on in her head coaching career. During the 2011-12 season, Arizona's 11-1 start was the best in program history since the 1999-2000 season. Butts earned her 70th-career win with UA's 100-68 victory versus Oregon on January 13, 2013.

Senior guard Davellyn Whyte finished her career at Arizona in 2013 as one of the best players in Wildcat women's basketball history. She was the 16th pick in the WNBA draft to the San Antonio Silver Stars, earned her fourth-straight All-Pac-12 accolade and was named an Associated Press Honorable Mention All-American in 2012.

Arizona's win was the first over Utah since 1985 and broke a six-game losing streak. The Wildcats followed it up with a 61-52 win at home for the first two-game winning streak against the Utes in history. On January 13, UA defeated Oregon, 100-68, scoring 100 points as a team for just the third time since 2009.

During the 2010-11 slate, the Wildcats made their first postseason appearance since the 2004-05 season and their first appearance in the Women's NIT since the 2000-01 season. Arizona won eight of its last 11 contests. Also in 2010-11, the Wildcats got a win against the Arizona State Sun Devils for the first time since Jan. 26, 2005. The Wildcats' 10-8 conference record in 2010-11 is their best since the 2004-05 campaign and their 21 wins overall is the most since the 2003-04 season. The 2010-11 season marks the highest finish in the Pac-10 for Arizona (fourth), since tying for the Pac-10 regular-season crown in 2004.

Senior forward Ify Ibekwe and then-sophomore Whyte both earned 2011 All-Pac-10 accolades. Ibekwe was named the 2011 Pac-10 Defensive Player of the Year and earned a spot on the Pac-10 All-Defensive Team. Barnes was named honorable mention All-Pac-10 Freshman Team. In the awards given out by the Pac-10 media, Ibekwe was named All-Pac-10 and a member of the All-Pac-10 Defensive Team. Senior forward Soana Lucet was also named to the 2011 Pac-10 All-Tournament Team by members of the media. Ibekwe capped the season off with her honorable mention Associated Press All-America honor.

Overall, the Wildcats improved from 12 wins in 2008-09, to 14 wins in 2009-10, to 21 wins in 2010-11. In Pac-10 play, Arizona improved from four wins in 2008-09, to six wins in 2009-10, to 10 wins in 2010-11.

During the 2009-10 campaign, the Wildcats posted their highest win total in five seasons while also achieving the most Pac-10 wins for the program in that same span. In their historic win over Oregon on Jan. 16, Arizona scored a school-record 119 points while then-freshman Whyte scored a single-game record 39 points. The Cats won the Iona College Tip-Off Tournament to start the season and wrapped up by advancing to the Pac-10 Tournament Quarterfinals for the second-straight season.

Whyte and then-junior Ibekwe were named first-team All-Pac-10 while Whyte was chosen as the Pac-10 Freshman of the Year and Ibekwe was named to the all-defensive team. Whyte was the top vote-getter on the five-player Pac-10 All-Freshman Team. Ibekwe repeated both her All-Pac-10 and All-Defensive Team awards after earning the same honors during her sophomore season. In 2008-09, Butts led the Wildcats to a Bank of Hawaii Classic Tournament Championship in the first weekend of her career, including wins over Hawai'i and Loyola Marymount, and then mentored the Wildcats to the second round of the Pac-10 Tournament, propelled by a win over Washington State. The conference portion of the slate included wins over Oregon and USC and a sweep of Washington.

Then a sophomore, Ibekwe was named to the Associated Press All-America honorable mention team. Ibekwe, a first-team All-Pac-10 selection and first-team All-Pac-10 Defensive Team

honoree, led Arizona in scoring, rebounding, steals, blocked shots, free throws, field goals and double-doubles during the 2008-09 slate. She finished the season with 336 rebounds, coming up three shy of the program's single-season record set in the 2003-04 season. Her 16 double-doubles were also second all-time for a single-season behind the 21 posted in the 2002-03 campaign. Ibekwe led the Pac-10 and finished sixth in the NCAA in rebounds per game at 11.6. She was also third in the Pac-10 in scoring at 15.7 points per game, while also finishing second in blocked shots (1.8) and 4th in steals (2.1).

Butts came to Tucson from the University of Kentucky where she spent five seasons as an assistant coach. In her final season in Lexington, she served as Kentucky's associate head coach, and was the program's recruiting coordinator for three seasons. While at UK, Butts secured two top-10 recruiting classes, solidifying her status as one of the best young coaching talents in the nation. Butts is no stranger to rebuilding programs. During her tenure at Kentucky, Butts helped coach the Wildcats to an 88-72 record (.550) over five seasons, with a trip to the NCAA Tournament in 2005-06 and three WNIT appearances. In her final season, Butts helped lead Kentucky to a 17-16 overall record, an 8-6 mark in the SEC for a fourth-place finish, and a WNIT quarterfinal appearance.

Before her stint at Kentucky, Butts spent the 2002-03 season as an assistant coach at Michigan State. Butts helped coach MSU to a 17-12 overall record that season and an appearance in the NCAA Tournament, the Spartans' first since 1997. Prior to Michigan State, Butts spent two seasons as an assistant coach at Tennessee Tech in Cookeville, Tenn., leading the Golden Eaglettes to two Ohio Valley Conference regular-season championships in both 2001 and 2002.

Butts played collegiately at the University of Tennessee for Pat Summitt, where she was a four-year letter winner and a member of two NCAA Championship teams (1997, 1998). The Lady Vols won three SEC titles (1998, 1999, 2000) during her tenure, and she was voted the SEC's Defensive Player of the Year in 1997. She also won the Lady Vols' Unsung Hero Award that season. Butts was a three-time Academic All-SEC selection (1998, 1999, 2000) and earned Tennessee's Academic Achiever of the Week four times. She played in 111 career games at UT and graduated in 2000 with a bachelor's degree in social work and a minor in psychology. She received a master's degree in education from Tennessee Tech in 2002.

Butts, 35, is a native of Americus, Ga. She is a proud member of Delta Sigma Theta Sorority, Incorporated.

THE NIYA BUTTS FILE

Hometown: Americus, Ga.
Named UA Head Coach: April 3, 2008

EDUCATION

- Tennessee, B.A. in social work and a minor in psychology
- Tennessee Tech, M.A. in education, 2002

COACHING EXPERIENCE

- 2008-Present Arizona, Head Coach
- 2007-2008 Kentucky, Associate Head Coach
- 2003-2007 Kentucky, Assistant Coach
- 2002-2003 Michigan State, Assistant Coach
- 2000-2002 Tennessee Tech, Assistant Coach

HEAD COACH POSTSEASON EXPERIENCE

- 2010-11 NCAA Tournament First Round

WNBA PLAYERS COACHED

- 2010-13 Davellyn Whyte (16th overall pick)

BUTTS YEAR-BY-YEAR (Head Coach)

Year	Record	Notable
<i>Arizona</i>		
2008-09	12-19 (4-14 Pac-10)	
2009-10	14-17 (6-12 Pac-10)	
2010-11	21-12 (10-8 Pac-10)	WNIT 1st Round
2011-12	15-17 (3-15 Pac-12)	
2012-13	12-18 (4-14 Pac-12)	
2013-14	5-25 (1-18 Pac-12)	
2014-15	10-20 (3-15 Pac-12)	
TOTAL	89-128 (31-95)	

PLAYING CAREER

- 1997-00 Tennessee**
- 1997 SEC Defensive Player of the Year
- 3-time Academic All-SEC selection ('98, '99, '00)
- 2-time NCAA National Champion ('97, '98)



Breanna WORKMAN

Forward • 6-1 • Junior • 2L • Las Vegas, Nev. (Centennial HS)

#0

TOP PERFORMANCES

POINTS

Season: 15, at North Texas (11/27/15)
Career: 17, vs. Stanford (02/08/15)r

REBOUNDS

Season: 8, vs. USC (02/05/16)
Career: 11, vs. Texas Tech (12/15/13)

ASSISTS

Season: 4, vs. Louisiana Tech (12/10/15)
Career: 4, 2x, last vs. Louisiana Tech (12/10/15)

STEALS

Season: 4, vs. New Mexico State (12/02/15)
Career: 4, vs. New Mexico State (12/02/15)

BLOCKS

Season: 1, at San Diego (11/21/15)
Career: 1, 5x, last at San Diego (11/21/15)

FIELD GOALS MADE

Season: 5, 2x, last vs. Arizona State (1/22/16)
Career: 8, vs. Stanford (02/08/15)

3-PT FIELD GOALS MADE

Season:
Career:

FREE THROWS MADE

Season: 7, at North Texas (11/27/15)
Career: 7, 2x, last at North Texas (11/27/15)

MINUTES PLAYED

Season: 35, at North Texas (11/27/15)
Career: 35, 2x, last at North Texas (11/27/15)

Workman's 2015-16 Game-by-Game Statistics

				Total		3-Pointers		Free throws		Rebounds													
Opponent	Date	gs	min	fg-fga	pct	3fg-fga	pct	ft-fia	pct	off	def	tot	avg	pf	a	t/o	blk	stl	pts	avg			
at Toledo	11/14/15	*	28	4-7	.571	0-1	.000	2-5	.400	2	5	7	7.0	2	1	4	0	0	10	10.0			
HOWW	11/18/15	*	22	0-1	.000	0-0	.000	0-0	.000	1	4	5	6.0	2	3	4	0	2	0	5.0			
at San Diego	11/21/15	*	30	3-6	.500	0-1	.000	4-6	.667	1	6	7	6.3	3	2	4	1	1	10	6.7			
UNIVERSITY OF KANSAS	11/23/15	*	25	1-2	.500	0-0	.000	0-0	.000	1	5	6	6.3	3	1	3	0	1	2	5.5			
at North Texas	11/27/15	*	35	4-10	.400	0-1	.000	7-10	.700	2	2	4	5.8	3	1	3	0	0	15	7.4			
NEW MEXICO STATE	12/2/15	*	28	5-8	.625	0-0	.000	1-3	.333	2	3	5	5.7	4	0	4	0	4	11	8.0			
PACIFIC	12/05/15	*	26	4-8	.500	0-0	.000	0-0	.000	0	5	5	5.6	3	3	4	0	3	8	8.0			
LOUISIANA TECH	12/10/15	*	25	3-7	.429	0-0	.000	1-2	.500	3	0	3	5.3	3	4	3	0	1	7	7.9			
vs SMU	DEC. 19	*	14	1-1	1.000	0-0	.000	2-2	1.000	0	2	2	4.9	4	0	2	0	0	4	7.4			
vs Florida Gulf Coast Eagle	DEC. 20	*	27	1-3	.333	0-0	.000	4-6	.667	1	5	6	5.0	2	1	5	0	0	6	7.3			
at Washington State	1/8/16		14	1-1	1.000	0-0	.000	0-0	.000	1	1	2	4.7	0	1	1	0	0	2	6.8			
at Washington	01/10/16		16	1-4	.250	0-0	.000	0-0	.000	2	1	3	4.6	3	1	1	0	1	2	6.4			
UTAH	01/15/16	*	27	0-4	.000	0-0	.000	2-4	.500	0	0	0	4.2	1	2	2	0	1	2	6.1			
COLORADO	01/17/16	*	29	4-5	.800	0-0	.000	2-2	1.000	1	6	7	4.4	2	1	0	0	1	10	6.4			
at Arizona State	1/22/16	*	25	5-7	.714	0-0	.000	3-4	.750	2	5	7	4.6	5	2	3	0	1	13	6.8			
ARIZONA STATE	1/24/16	*	24	3-5	.600	0-0	.000	0-0	.000	0	2	2	4.4	0	0	1	0	0	6	6.8			
at Oregon State	1/29/16	*	20	1-7	.143	0-0	.000	1-2	.500	1	2	3	4.4	3	1	2	0	0	3	6.5			
at Oregon	1/31/16	*	29	3-3	1.000	0-0	.000	0-0	.000	0	4	4	4.3	1	0	5	0	0	6	6.5			
USC	02/05/16	*	31	2-6	.333	0-0	.000	5-6	.833	1	7	8	4.5	1	2	1	0	0	9	6.6			
UCLA	02/07/16	*	26	0-1	.000	0-0	.000	0-0	.000	2	2	4	4.5	2	0	2	0	0	0	6.3			
Totals			18	501	46-96	.479	0-3	.000	34-52	.654	23	67	90	4.5	47	26	54	1	16	126	6.3		

Games played: 20
Minutes/game: 25.1
Points/game: 6.3
FG Pct: 47.9
3FG Pct: 0.0
FT Pct: 65.4

Rebounds/game: 4.5
Assists/game: 1.3
Turnovers/game: 2.7
Assist/turnover ratio: 0.5
Steals/game: 0.8
Blocks/game: 0.1

Workman's Career Statistics

			Total		3-Point		F-Throws		Rebounds											Scoring	
Season	gp-gs	min/avg	fg-fga	pct	fg-fga	pct	ft-fa	pct	off	def	tot	avg	pf	fo	ast	to	blk	stl	pts	avg	
2013-14	30-28	698/23.3	75-169	.444	0-0	.000	50-77	.649	43	78	121	4.0	77	0	25	46	1	22	200	6.7	
2014-15	28-13	534/19.1	44-103	.427	0-0	.000	35-51	.686	35	68	103	3.7	64	0	12	35	4	15	123	4.4	
2015-16	20-18	501/25.1	46-96	.479	0-3	.000	34-52	.654	23	67	90	4.5	47	1	26	54	1	16	126	6.3	
TOTAL	78-59	1733/22.2	165-368	.448	0-3	.000	119-180	.661	101	213	314	4.0	188	1	63	135	6	53	449	5.8	



Taryn GRIFFEY

Guard • 5-7 • Redshirt Freshman • HS • Seattle, Wash. (Dr. Phillips HS)

#3

TOP PERFORMANCES

POINTS

Season: 29, vs. Gardner-Webb (12/21/15)
Career: 29, vs. Gardner-Webb (12/21/15)

REBOUNDS

Season: 8, at Washington (01/10/16)
Career: 8, at Washington (01/10/16)

ASSISTS

Season: 4, 2x last vs. Howard (11/18/15)
Career: 4, 2x last vs. Howard (11/18/15)

STEALS

Season: 3, vs. George Mason (12/29/15)
Career: 3, vs. George Mason (12/29/15)

BLOCKS

Season: 1, 4x, last vs. SMU (12/19/15)
Career: 1, 4x, last vs. SMU (12/29/15)

FIELD GOALS MADE

Season: 11, vs. Gardner-Webb (12/21/15)
Career: 11, vs. Gardner-Webb (12/21/15)

3-PT FIELD GOALS MADE

Season: 7, vs. Gardner-Webb (12/21/15)
Career: 7, vs. Gardner-Webb (12/21/15)

FREE THROWS MADE

Season: 2, 3x, last vs. Cal (01/04/16)
Career: 2, 3x, last vs. Cal (01/04/16)

MINUTES PLAYED

Season: 28, vs. SMU (12/19/15)
Career: 28, vs. SMU (12/19/15)

Griffey's 2015-16 Game-by-Game Statistics

				Total		3-Pointers		Free throws		Rebounds											
Opponent	Date	gs	min	fg-fga	pct	3fg-fga	pct	ft-fa	pct	off	def	tot	avg	pf	a	t/o	blk	stl	pts	avg	
at Toledo	11/14/15	*	23	6-10	.600	6-9	.667	0-0	.000	0	4	4	4.0	1	4	4	0	1	18	18.0	
HOWW	11/18/15	*	20	3-5	.600	1-3	.333	0-2	.000	1	1	2	3.0	0	4	0	1	1	7	12.5	
at San Diego	11/21/15	*	23	2-8	.250	1-2	.500	0-0	.000	1	2	3	3.0	1	2	0	1	0	5	10.0	
UNIVERSITY OF KANSAS	11/23/15	*	23	6-9	.667	3-5	.600	2-4	.500	0	2	2	2.8	3	2	2	0	1	17	11.8	
at North Texas	11/27/15	*	18	1-4	.250	0-2	.000	1-2	.500	0	1	1	2.4	1	0	3	1	0	3	10.0	
NEW MEXICO STATE	12/2/15	*	22	5-7	.714	3-5	.600	1-2	.500	1	1	2	2.3	2	2	1	0	1	14	10.7	
PACIFIC	12/05/15	*	20	1-5	.200	0-2	.000	0-0	.000	0	2	2	2.3	1	2	1	0	1	2	9.4	
vs SMU	DEC. 19	*	28	6-11	.545	2-5	.400	2-3	.667	2	4	6	2.8	2	1	4	1	2	16	10.3	
vs Florida Gulf Coast Eagle	DEC. 20	*	12	0-1	.000	0-1	.000	0-0	.000	0	1	1	2.6	2	1	1	0	0	0	9.1	
vs GARDNE~1	DEC. 21	*	26	11-20	.550	7-11	.636	0-0	.000	1	3	4	2.7	2	1	1	0	0	29	11.1	
GEORGE MASON	12/29/15	*	24	3-9	.333	2-6	.333	1-2	.500	2	3	5	2.9	1	1	4	0	3	9	10.9	
STANFORD	1/2/16	*	13	0-3	.000	0-1	.000	0-0	.000	1	1	2	2.8	2	0	0	0	0	0	10.0	
CALIFORNIA	1/4/16	*	20	4-8	.500	1-4	.250	2-2	1.000	0	0	0	2.6	0	0	2	0	1	11	10.1	
at Washington State	1/8/16		15	2-6	.333	1-2	.500	0-0	.000	1	2	3	2.6	1	0	3	0	0	5	9.7	
at Washington	01/10/16	*	25	3-13	.231	2-6	.333	0-1	.000	1	7	8	3.0	1	2	3	0	1	8	9.6	
UTAH	01/15/16		7	0-5	.000	0-3	.000	0-0	.000	1	2	3	3.0	2	0	0	0	0	0	9.0	
Totals			14	319	53-124	.427	29-67	.433	9-18	.500	12	36	48	3.0	22	22	29	4	12	144	9.0

Games played: 16
Minutes/game: 19.9
Points/game: 9.0
FG Pct: 42.7
3FG Pct: 43.3
FT Pct: 50.0

Rebounds/game: 3.0
Assists/game: 1.4
Turnovers/game: 1.8
Assist/turnover ratio: 0.8
Steals/game: 0.8
Blocks/game: 0.3

Griffey's Career Statistics

Season	gp-gs	min/avg	Total		3-Point		F-Throws		Rebounds				pf	fo	ast	to	blk	stl	Scoring	
			fg-fga	pct	fg-fga	pct	ft-fa	pct	off	def	tot	avg							pts	avg
2015-16	16-14	319/19.9	53-124	.427	29-67	.433	9-18	.500	12	36	48	3.0	22	0	22	29	4	12	144	9.0
TOTAL	16-14	319/19.9	53-124	.427	29-67	.433	9-18	.500	12	36	48	3.0	22	0	22	29	4	12	144	9.0



Lauren EVANS

Guard • 5-11 • Junior • TR • Phoenix, Ariz. (Hamilton HS/ Virginia Tech)

#10

TOP PERFORMANCES

POINTS

Season: 10, vs. George Mason (12/29/15)
Career: 10, vs. George Mason (12/29/15)

REBOUNDS

Season: 10, at Toledo (11/14/15)
Career: 10, at Toledo (11/14/15)

ASSISTS

Season: 4, vs. USC (02/05/16)
Career: 4, vs. USC (02/05/16)

STEALS

Season: 4, at North Texas (11/27/15)
Career: 4, at North Texas (11/27/15)

BLOCKS

Season: 3, vs. George Mason (12/29/15)
Career: 3, vs. George Mason (12/29/15)

FIELD GOALS MADE

Season: 5, vs. George Mason (12/29/15)
Career: 5, vs. George Mason (12/29/15)

3-PT FIELD GOALS MADE

Season:
Career:

FREE THROWS MADE

Season: 3, vs. Stanford (01/02/16)
Career: 3, vs. Stanford (01/02/16)

MINUTES PLAYED

Season: 27, vs. George Mason (12/29/15)
Career: 27, vs. George Mason (12/29/15)

Evans' 2015-16 Game-by-Game Statistics

Opponent	Date	gs	min	Total		3-Pointers		Free throws		Rebounds				pf	a	t/o	blk	stl	pts	avg
				fg-fga	pct	3fg-fga	pct	ft-fa	pct	off	def	tot	avg							
at Toledo	11/14/15	26	4-7	.571	0-0	.000	0-0	.000	6-4	10	10.0	3	1	1	1	3	8	8.0		
HOWW	11/18/15	19	0-2	.000	0-0	.000	0-0	.000	1-2	3	6.5	4	0	1	1	1	0	4.0		
at San Diego	11/21/15	22	3-7	.429	0-0	.000	0-0	.000	1-0	1	4.7	3	0	1	0	0	6	4.7		
UNIVERSITY OF KANSAS	11/23/15	11	0-2	.000	0-0	.000	1-2	.500	0-1	1	3.8	4	0	0	0	1	1	3.8		
at North Texas	11/27/15	20	2-3	.667	0-0	.000	1-1	1.000	1-5	6	4.2	1	1	0	0	4	5	4.0		
NEW MEXICO STATE	12/2/15	25	2-3	.667	0-0	.000	2-2	1.000	1-0	1	3.7	1	1	1	0	2	6	4.3		
PACIFIC	12/05/15	23	2-4	.500	0-0	.000	0-2	.000	2-4	6	4.0	2	3	0	0	1	4	4.3		
LOUISIANA TECH	12/10/15	21	3-4	.750	0-0	.000	0-0	.000	1-2	3	3.9	2	2	1	0	2	6	4.5		
vs SMU	DEC. 19	20	0-2	.000	0-0	.000	2-2	1.000	1-4	5	4.0	1	1	0	1	0	2	4.2		
vs Florida Gulf Coast Eagle	DEC. 20	22	0-1	.000	0-0	.000	0-0	.000	1-4	5	4.1	3	3	1	0	0	0	3.8		
vs GARDNE-1	DEC. 21	17	1-3	.333	0-0	.000	1-2	.500	0-1	1	3.8	2	1	0	0	2	3	3.7		
GEORGE MASON	12/29/15	27	5-7	.714	0-1	.000	0-0	.000	3-3	6	4.0	1	2	1	3	1	10	4.3		
STANFORD	1/2/16	25	1-2	.500	0-0	.000	3-4	.750	1-0	1	3.8	1	3	1	0	1	5	4.3		
CALIFORNIA	1/4/16	18	1-6	.167	0-0	.000	2-2	1.000	0-2	2	3.6	2	1	0	0	2	4	4.3		
at Washington State	1/8/16	16	0-2	.000	0-0	.000	1-2	.500	0-2	2	3.5	1	1	2	0	0	1	4.1		
at Washington	01/10/16	11	0-1	.000	0-0	.000	0-0	.000	0-1	1	3.4	3	1	0	0	0	0	3.8		
UTAH	01/15/16	9	1-1	1.000	0-0	.000	0-0	.000	1-5	6	3.5	0	0	2	0	0	2	3.7		
COLORADO	01/17/16	20	3-5	.600	0-0	.000	0-0	.000	1-0	1	3.4	3	0	1	0	0	6	3.8		
at Arizona State	1/22/16	16	1-1	1.000	0-0	.000	0-0	.000	0-2	2	3.3	0	0	5	0	0	2	3.7		
ARIZONA STATE	1/24/16	23	0-3	.000	0-0	.000	0-0	.000	0-1	1	3.2	4	0	3	1	0	0	3.6		
at Oregon State	1/29/16	25	1-1	1.000	0-0	.000	0-0	.000	3-0	3	3.2	1	0	2	0	0	2	3.5		
at Oregon	1/31/16	26	1-3	.333	0-0	.000	0-0	.000	0-1	1	3.1	1	1	3	0	0	2	3.4		
USC	02/05/16	22	2-6	.333	0-0	.000	0-0	.000	1-2	3	3.1	0	4	1	1	0	4	3.4		
UCLA	02/07/16	22	1-4	.250	0-0	.000	0-0	.000	1-1	2	3.0	1	0	2	0	1	2	3.4		
Totals		0	486	34-80	.425	0-1	.000	13-19	.684	26	47	73	3.0	44	26	29	8	21	81	3.4

Games played: 24
Minutes/game: 20.3
Points/game: 3.4
FG Pct: 42.5
3FG Pct: 0.0
FT Pct: 68.4

Rebounds/game: 3.0
Assists/game: 1.1
Turnovers/game: 1.2
Assist/turnover ratio: 0.9
Steals/game: 0.9
Blocks/game: 0.3

Evans' Career Statistics

			Total		3-Point		F-Throws		Rebounds											Scoring	
Season	gp-gs	min/avg	fg-fga	pct	fg-fga	pct	ft-fa	pct	off	def	tot	avg	pf	fo	ast	to	blk	stl	pts	avg	
2015-16	24-0	486/20.3	34-80	.425	0-1	.000	13-19	.684	26	47	73	3.0	44	0	26	29	8	21	81	3.4	
TOTAL	24-0	486/20.3	34-80	.425	0-1	.000	13-19	.684	26	47	73	3.0	44	0	26	29	8	21	81	3.4	



Malena WASHINGTON

Guard • 5-6 • Junior • 1L • Beaumont, Texas (Central HS/ Tyler JC)

#14

TOP PERFORMANCES

POINTS

Season: 23, vs. Oregon (01/31/16)
Career: 23, vs. Oregon (01/31/16)

REBOUNDS

Season: 6, vs. Cal (01/04/16)
Career: 7, at Wake Forest (12/07/14)

ASSISTS

Season: 7, vs. Arizona State (01/22/16)
Career: 7, vs. Arizona State (01/22/16)

STEALS

Season: 2, 5x, last vs. Oregon (01/31/16)
Career: 2, 9x, last vs. Oregon (01/31/16)

BLOCKS

Season: 1, vs. Utah (01/15/16)
Career: 1, 2x, last vs. Utah (01/15/16)

FIELD GOALS MADE

Season: 9, vs. Oregon (01/31/16)
Career: 9, vs. Oregon (01/31/16)

3-PT FIELD GOALS MADE

Season: 5, vs. Pacific (12/05/15)
Career: 5, vs. Pacific (12/05/15)

FREE THROWS MADE

Season: 5, vs. Florida Gulf Coast (12/20/15)
Career: 6, at Utah (01/30/15)

MINUTES PLAYED

Season: 32, vs. Arizona State (01/24/16)
Career: 37, vs. Oregon (01/25/15)

Washington's 2014-15 Game-by-Game Statistics

				Total		3-Pointers		Free throws		Rebounds											
Opponent	Date	qs	min	fg-fga	pct	3fg-fga	pct	ft-fia	pct	off	def	tot	avg	pf	a	t/o	blk	stl	pts	avg	
at Toledo	11/14/15		27	4-13	.308	2-5	.400	0-0	.000	0	1	1	1.0	2	4	1	0	2	10	10.0	
HOWW	11/18/15		26	2-8	.250	1-3	.333	2-2	1.000	0	3	3	2.0	2	4	2	0	2	7	8.5	
at San Diego	11/21/15		9	4-10	.400	2-4	.500	0-0	.000	1	0	1	1.7	4	4	6	0	0	10	9.0	
UNIVERSITY OF KANSAS	11/23/15		22	6-12	.500	1-2	.500	3-3	1.000	0	2	2	1.8	2	0	3	0	1	16	10.8	
at North Texas	11/27/15		19	4-7	.571	0-1	.000	1-2	.500	0	1	1	1.6	3	0	5	0	2	9	10.4	
NEW MEXICO STATE	12/2/15		27	6-14	.429	1-6	.167	4-5	.800	1	2	3	1.8	2	3	4	0	1	17	11.5	
PACIFIC	12/05/15		26	6-10	.600	5-8	.625	4-4	1.000	0	1	1	1.7	1	3	3	0	0	21	12.9	
LOUISIANA TECH	12/10/15		23	4-13	.308	1-6	.167	2-2	1.000	1	1	2	1.8	3	4	2	0	1	11	12.6	
vs SMU	DEC. 19		23	1-7	.143	1-2	.500	0-2	.000	0	0	0	1.6	2	3	0	0	1	3	11.6	
vs Florida Gulf Coast Eagle	DEC. 20		27	3-8	.375	0-3	.000	5-5	1.000	0	2	2	1.6	1	4	1	0	1	11	11.5	
vs GARDNE-1	DEC. 21		22	4-7	.571	1-4	.250	0-0	.000	1	1	2	1.6	2	5	4	0	1	9	11.3	
GEORGE MASON	12/29/15		24	4-10	.400	3-6	.500	1-2	.500	1	3	4	1.8	3	1	2	0	0	12	11.3	
STANFORD	1/2/16		21	2-11	.182	1-5	.200	0-0	.000	0	1	1	1.8	0	0	2	0	1	5	10.8	
CALIFORNIA	1/4/16		26	3-15	.200	1-8	.125	3-4	.750	1	5	6	2.1	0	3	2	0	1	10	10.8	
at Washington State	1/8/16	*	21	1-7	.143	0-2	.000	0-0	.000	0	1	1	2.0	2	3	3	0	0	2	10.2	
at Washington	01/10/16		27	3-10	.300	2-7	.286	0-0	.000	0	3	3	2.1	2	3	1	0	1	8	10.1	
UTAH	01/15/16	*	30	6-15	.400	2-5	.400	1-1	1.000	2	0	2	2.1	1	5	3	1	2	15	10.4	
COLORADO	01/17/16	*	15	1-6	.167	0-0	.000	2-6	.333	0	0	0	1.9	3	4	2	0	0	4	10.0	
at Arizona State	1/22/16	*	30	5-12	.417	1-5	.200	3-4	.750	0	1	1	1.9	2	7	3	0	0	14	10.2	
ARIZONA STATE	1/24/16	*	32	7-15	.467	1-3	.333	2-3	.667	0	1	1	1.9	2	4	2	0	1	17	10.6	
at Oregon State	1/29/16	*	25	4-12	.333	0-1	.000	0-0	.000	1	3	4	2.0	0	2	1	0	0	8	10.4	
at Oregon	1/31/16	*	31	9-15	.600	3-8	.375	2-2	1.000	0	2	2	2.0	2	2	4	0	2	23	11.0	
USC	02/05/16	*	22	1-7	.143	0-2	.000	0-0	.000	0	0	0	1.9	5	0	6	0	0	2	10.6	
UCLA	02/07/16	*	31	6-14	.429	1-6	.167	1-2	.500	0	2	2	1.9	4	0	5	0	0	14	10.8	
Totals		9	586	96-258	.372	30-102	.294	36-49	.735	9	36	45	1.9	50	68	67	1	20	258	10.8	

Games played: 24
Minutes/game: 24.4
Points/game: 10.8
FG Pct: 37.2
3FG Pct: 29.4
FT Pct: 73.5

Rebounds/game: 1.9
Assists/game: 2.8
Turnovers/game: 2.8
Assist/turnover ratio: 1.0
Steals/game: 0.8
Blocks/game: 0.0

Washington's Career Statistics

			Total		3-Point		F-Throws		Rebounds											Scoring	
Season	gp-gs	min/avg	fg-fga	pct	fg-fga	pct	ft-fga	pct	off	def	tot	avg	pf	fo	ast	to	blk	stl	pts	avg	
2014-15	30-25	724/24.1	75-220	.341	9-45	.200	47-60	.783	17	45	62	2.1	55	1	64	82	1	16	206	6.9	
2015-16	24-9	586/24.4	96-258	.372	30-102	.294	36-49	.735	9	36	45	1.9	50	1	68	67	1	20	258	10.8	
TOTAL	54-34	1310/24.3	171-478	.358	39-147	.265	83-109	.761	26	81	107	2.0	105	2	132	149	2	36	464	8.6	



Keyahndra CANNON

Guard • 5-9 • Senior • 3L • San Diego, Calif. (Mission Bay HS)

#15

TOP PERFORMANCES

POINTS

Season: 11, vs. Colorado (01/17/16)
Career: 14, 2x, last at Utah (01/30/15)

REBOUNDS

Season: 6, vs. Colorado (01/17/16)
Career: 6, 2x, last vs. Colorado (01/17/16)

ASSISTS

Season: 3, 5x, last vs. Oregon (01/31/16)
Career: 6, at Oregon (03/02/14)

STEALS

Season: 3, 4x, last vs. George Mason (12/29/15)
Career: 6, 4x, last vs. George Mason (12/29/15)

BLOCKS

Season: 1, 2x, last vs. SMU (12/19/15)
Career: 1, 15x, last vs. SMU (12/19/15)

FIELD GOALS MADE

Season: 5, vs. Florida Gulf Coast (12/20/15)
Career: 5, 8x, last vs. FGCU (12/20/15)

3-PT FIELD GOALS MADE

Season: 1, 2x, last at Washington (01/10/16)
Career: 4 vs. Arkansas-Pine Bluff (12/29/13)

FREE THROWS MADE

Season: 7, vs. Colorado (01/17/16)
Career: 7, vs. Colorado (01/17/16)

MINUTES PLAYED

Season: 35, at San Diego (11/21/15)
Career: 40, at Stanford (02/16/14)

Cannon's 2015-16 Game-by-Game Statistics

Opponent	Date	gs	min	Total		3-Pointers		Free throws		Rebounds				pf	a	t/o	blk	stl	pts	avg	
				fg-fga	pct	3fg-fga	pct	ft-fa	pct	off	def	tot	avg								
at Toledo	11/14/15	*	26	1-4	.250	0-0	.000	0-0	.000	0	1	1	1.0	0	3	3	0	1	2	2.0	
HOWW	11/18/15	*	22	2-7	.286	1-1	1.000	1-1	1.000	1	2	3	2.0	2	0	4	0	3	6	4.0	
at San Diego	11/21/15	*	35	4-6	.667	0-0	.000	0-0	.000	0	3	3	2.3	2	1	1	0	0	8	5.3	
UNIVERSITY OF KANSAS	11/23/15	*	18	2-4	.500	0-1	.000	0-0	.000	0	2	2	2.3	1	0	2	0	0	4	5.0	
at North Texas	11/27/15	*	17	0-0	.000	0-0	.000	0-0	.000	0	4	4	2.6	0	3	0	0	1	0	4.0	
NEW MEXICO STATE	12/2/15	*	12	1-3	.333	0-0	.000	0-0	.000	0	0	0	2.2	1	0	1	0	0	2	3.7	
PACIFIC	12/05/15	*	21	1-3	.333	0-0	.000	4-4	1.000	0	2	2	2.1	0	1	1	0	0	6	4.0	
LOUISIANA TECH	12/10/15	*	18	1-4	.250	0-0	.000	0-0	.000	1	2	3	2.3	1	3	1	1	0	2	3.8	
vs SMU	DEC. 19	*	23	1-4	.250	0-1	.000	0-0	.000	2	3	5	2.6	3	0	1	1	0	2	3.6	
vs Florida Gulf Coast Eagle	DEC. 20	*	26	5-10	.500	0-1	.000	0-0	.000	0	1	1	2.4	4	1	2	0	3	10	4.2	
vs GARDNE-1	DEC. 21	*	29	3-8	.375	0-1	.000	2-2	1.000	0	2	2	2.4	3	0	2	0	3	8	4.5	
GEORGE MASON	12/29/15	*	29	0-3	.000	0-1	.000	0-0	.000	1	3	4	2.5	1	3	1	0	3	0	4.2	
STANFORD	1/2/16	*	27	1-6	.167	0-2	.000	1-1	1.000	1	2	3	2.5	1	1	3	0	0	3	4.1	
CALIFORNIA	1/4/16	*	12	0-1	.000	0-0	.000	0-0	.000	0	0	0	2.4	1	0	1	0	0	0	3.8	
at Washington State	1/8/16	*	24	1-2	.500	0-0	.000	0-0	.000	1	2	3	2.4	1	1	3	0	0	2	3.7	
at Washington	01/10/16	*	17	2-6	.333	1-3	.333	0-0	.000	2	1	3	2.4	2	0	2	0	0	5	3.8	
UTAH	01/15/16	*	24	3-7	.429	0-0	.000	0-0	.000	0	3	3	2.5	2	2	1	0	1	6	3.9	
COLORADO	01/17/16	*	31	2-4	.500	0-1	.000	7-8	.875	1	5	6	2.7	0	2	2	0	1	11	4.3	
at Arizona State	1/22/16	*	24	3-4	.750	0-0	.000	0-0	.000	0	4	4	2.7	1	0	4	0	0	6	4.4	
ARIZONA STATE	1/24/16	*	24	1-2	.500	0-0	.000	3-4	.750	1	0	1	2.7	3	1	1	0	0	5	4.4	
at Oregon State	1/29/16	*	12	0-1	.000	0-0	.000	0-0	.000	0	2	2	2.6	1	0	0	0	0	0	4.2	
at Oregon	1/31/16	*	14	0-1	.000	0-0	.000	0-0	.000	0	1	1	2.5	0	3	0	1	0	0	4.0	
USC	02/05/16	*	28	3-8	.375	0-0	.000	0-0	.000	4	0	4	2.6	0	2	2	0	1	6	4.1	
UCLA	02/07/16	*	28	2-11	.182	0-5	.000	2-2	1.000	2	0	2	2.6	3	1	3	0	0	6	4.2	
Totals			24	541	39-109	.358	2-17	.118	20-22	.909	17	45	62	2.6	33	28	41	3	17	100	4.2

Games played: 24
Minutes/game: 22.5
Points/game: 4.2
FG Pct: 35.8
3FG Pct: 11.8
FT Pct: 90.9

Rebounds/game: 2.6
Assists/game: 1.2
Turnovers/game: 1.7
Assist/turnover ratio: 0.7
Steals/game: 0.7
Blocks/game: 0.1

Cannon's Career Statistics

Season	gp-gs	min/avg	Total		3-Point		F-Throws		Rebounds				pf	fo	ast	to	blk	stl	Scoring	
			fg-fga	pct	fg-fga	pct	ft-fa	pct	off	def	tot	avg							pts	avg
2012-13	30-0	468/15.6	42-126	.333	8-28	.286	25-31	.806	24	41	65	2.2	58	2	15	39	8	11	117	3.9
2013-14	29-1	546/18.8	46-124	.371	9-21	.429	18-34	.529	19	41	60	2.1	41	0	22	45	2	16	119	4.1
2014-15	30-16	718/23.9	67-196	.342	10-43	.233	21-34	.618	20	48	68	2.3	46	0	44	49	3	21	165	5.5
2015-16	24-24	541/22.5	39-109	.358	2-17	.118	20-22	.909	17	45	62	2.6	33	0	28	41	3	17	100	4.2
TOTAL	113-41	2273/20.1	194-555	.350	29-109	.266	84-121	.694	80	175	255	2.3	178	2	109	174	16	65	501	4.4



Farrin BELL

Guard • 6-0 • Redshirt Junior • 1L • Richardson, Texas (Richardson HS/SMU)

#20

TOP PERFORMANCES

POINTS

Season: 10, vs. La Tech (12/10/15)
Career: 10, vs. La Tech (12/10/15)

REBOUNDS

Season: 6, vs. Oregon State (1/29/16)
Career: 6, vs. Oregon State (1/29/16)

ASSISTS

Season: 4, 2x, last vs. Kansas (11/23/15)
Career: 4, 2x, last vs. Kansas (11/23/15)

STEALS

Season: 3, vs. Pacific (12/05/15)
Career: 3, vs. Pacific (12/05/15)

BLOCKS

Season: 1, at Toledo (11/14/15)
Career: 1, at Toledo (11/14/15)

FIELD GOALS MADE

Season: 4, vs. La Tech (12/10/15)
Career: 4, vs. La Tech (12/10/15)

3-PT FIELD GOALS MADE

Season:
Career:

FREE THROWS MADE

Season: 2, 3x, last vs. La Tech (12/10/15)
Career: 2, 3x, last vs. La Tech (12/10/15)

MINUTES PLAYED

Season: 25, vs. Colorado (01/17/16)
Career: 25, vs. Colorado (01/17/16)

Bell's 2015-16 Game-by-Game Statistics

Opponent	Date	qs	min	Total		3-Pointers		Free throws		Rebounds				pf	a	t/o	blk	stl	pts	avg
				fg-fga	pct	3fg-fga	pct	ft-fa	pct	off	def	tot	avg							
at Toledo	11/14/15	10	1-1	1.000	0-0	.000	2-4	.500	0	0	0	0.0	1	0	1	1	0	4	4.0	
HOWW	11/18/15	12	1-3	.333	0-0	.000	1-2	.500	2	3	5	2.5	2	4	1	0	0	3	3.5	
at San Diego	11/21/15	8	1-1	1.000	0-0	.000	0-0	.000	1	2	3	2.7	2	1	0	0	0	2	3.0	
UNIVERSITY OF KANSAS	11/23/15	17	1-2	.500	0-0	.000	1-4	.250	2	1	3	2.8	1	4	1	1	0	3	3.0	
at North Texas	11/27/15	18	0-1	.000	0-0	.000	0-0	.000	1	2	3	2.8	2	2	2	0	1	0	2.4	
NEW MEXICO STATE	12/2/15	20	0-2	.000	0-0	.000	0-0	.000	0	3	3	2.8	0	2	3	0	0	0	2.0	
PACIFIC	12/05/15	14	2-4	.500	0-0	.000	2-4	.500	0	3	3	2.9	1	1	2	0	3	6	2.6	
LOUISIANA TECH	12/10/15 *	24	4-6	.667	0-0	.000	2-3	.667	0	5	5	3.1	2	1	2	0	1	10	3.5	
vs SMU	DEC. 19	12	1-4	.250	0-1	.000	0-0	.000	0	1	1	2.9	1	1	0	0	1	2	3.3	
vs Florida Gulf Coast Eagle	DEC. 20	8	0-0	.000	0-0	.000	0-0	.000	0	1	1	2.7	0	0	2	0	0	0	3.0	
vs GARDNE~1	DEC. 21	12	0-2	.000	0-0	.000	0-0	.000	0	1	1	2.5	2	1	1	0	0	0	2.7	
GEORGE MASON	12/29/15	8	0-1	.000	0-0	.000	0-0	.000	0	1	1	2.4	1	0	0	0	1	0	2.5	
STANFORD	1/2/16	11	0-1	.000	0-0	.000	0-0	.000	0	1	1	2.3	1	0	0	0	0	0	2.3	
CALIFORNIA	1/4/16	15	2-3	.667	0-0	.000	0-0	.000	1	0	1	2.2	1	2	0	0	0	4	2.4	
at Washington State	1/8/16	14	1-4	.250	0-0	.000	0-1	.000	0	1	1	2.1	0	1	3	0	1	2	2.4	
at Washington	01/10/16	12	0-3	.000	0-0	.000	0-0	.000	0	2	2	2.1	0	0	1	0	1	0	2.3	
UTAH	01/15/16	20	1-3	.333	0-0	.000	0-0	.000	2	1	3	2.2	0	2	1	0	0	2	2.2	
COLORADO	01/17/16	25	0-2	.000	0-0	.000	0-0	.000	1	0	1	2.1	2	2	3	0	0	0	2.1	
at Arizona State	1/22/16	10	0-1	.000	0-0	.000	0-0	.000	1	0	1	2.1	1	0	4	0	0	0	2.0	
ARIZONA STATE	1/24/16	8	0-1	.000	0-0	.000	0-2	.000	0	0	0	2.0	0	1	2	0	2	0	1.9	
at Oregon State	1/29/16	15	1-3	.333	0-0	.000	0-0	.000	0	6	6	2.1	0	2	1	1	1	2	1.9	
at Oregon	1/31/16	20	0-2	.000	0-0	.000	0-0	.000	2	0	2	2.1	2	1	3	0	0	0	1.8	
USC	02/05/16	18	0-1	.000	0-0	.000	0-0	.000	0	3	3	2.2	1	0	1	0	0	0	1.7	
UCLA	02/07/16	11	0-0	.000	0-0	.000	0-0	.000	0	1	1	2.1	0	0	4	0	2	0	1.7	
Totals		1	342	16-51	.314	0-1	.000	8-20	.400	13	38	51	2.1	23	28	38	3	14	40	1.7

Bell's Career Statistics

			Total		3-Point		F-Throws		Rebounds											Scoring	
Season	gp-gs	min/avg	fg-fga	pct	fg-fga	pct	ft-fa	pct	off	def	tot	avg	pf	fo	ast	to	blk	stl	pts	avg	
2014-15	2-0	26/13.0	1-6	.167	0-1	.000	0-0	.000	0	0	0	0.0	3	0	2	1	0	1	2	1.0	
2015-16	24-1	342/14.3	16-51	.314	0-1	.000	8-20	.400	13	38	51	2.1	23	0	28	38	3	14	40	1.7	
TOTAL	26-1	368/14.2	17-57	.298	0-2	.000	8-20	.400	13	38	51	2.0	26	0	30	39	3	15	42	1.6	



Destiny GRAHAM

Forward • 6-3 • Freshman • HS • San Francisco, Calif. (Eastside College Prep)

#21

TOP PERFORMANCES

POINTS

Season: 14, vs. George Mason (12/29/15)
Career: 14, vs. George Mason (12/29/15)

REBOUNDS

Season: 9, at Toledo (11/14/15)
Career: 9, at Toledo (11/14/15)

ASSISTS

Season: 3, at Toledo (11/14/15)
Career: 3, at Toledo (11/14/15)

STEALS

Season: 3, at Toledo (11/14/15)
Career: 3, at Toledo (11/14/15)

BLOCKS

Season: 2, vs. Pacific (12/05/15)
Career: 2, vs. Pacific (12/05/15)

FIELD GOALS MADE

Season: 4, 2x, last at Washington State (1/8/16)
Career: 4, 2x, last at Washington State (1/8/16)

3-PT FIELD GOALS MADE

Season:
Career:

FREE THROWS MADE

Season: 6, vs. George Mason (12/29/15)
Career: 6, vs. George Mason (12/29/15)

MINUTES PLAYED

Season: 31, vs. George Mason (12/29/15)
Career: 31, vs. George Mason (12/29/15)

Graham's 2015-16 Game-by-Game Statistics

Opponent	Date	gs	min	Total		3-Pointers		Free throws		Rebounds				pf	a	t/o	blk	stl	pts	avg
				fg-fga	pct	3fg-fga	pct	ft-fa	pct	off	def	tot	avg							
at Toledo	11/14/15	28	1-4	.250	0-0	.000	0-2	.000	5	4	9	9.0	2	3	0	1	3	2	2.0	
HOWW	11/18/15	16	0-1	.000	0-0	.000	0-0	.000	1	0	1	5.0	4	1	0	0	0	0	1.0	
at San Diego	11/21/15	9	1-2	.500	0-0	.000	1-1	1.000	0	2	2	4.0	2	0	0	1	0	3	1.7	
UNIVERSITY OF KANSAS	11/23/15	14	0-2	.000	0-0	.000	2-2	1.000	2	2	4	4.0	2	0	0	0	0	2	1.8	
at North Texas	11/27/15	9	0-2	.000	0-0	.000	0-2	.000	0	0	0	3.2	1	0	2	0	2	0	1.4	
NEW MEXICO STATE	12/2/15	10	0-1	.000	0-0	.000	2-4	.500	1	3	4	3.3	2	2	0	0	0	2	1.5	
PACIFIC	12/05/15	13	2-3	.667	0-0	.000	1-2	.500	1	3	4	3.4	4	1	1	2	0	5	2.0	
LOUISIANA TECH	12/10/15	8	2-2	1.000	0-0	.000	0-0	.000	1	1	2	3.3	3	0	0	0	0	4	2.3	
vs SMU	DEC. 19	5	0-1	.000	0-0	.000	0-0	.000	1	0	1	3.0	3	0	1	1	0	0	2.0	
vs Florida Gulf Coast Eagle	DEC. 20	10	2-3	.667	0-0	.000	0-0	.000	1	2	3	3.0	2	1	2	1	1	4	2.2	
vs GARDNE-1	DEC. 21	20	1-3	.333	0-0	.000	0-0	.000	4	1	5	3.2	2	2	0	0	2	2	2.2	
GEORGE MASON	12/29/15	31	4-6	.667	0-0	.000	6-6	1.000	2	2	4	3.3	3	2	1	0	0	14	3.2	
STANFORD	1/2/16	20	0-3	.000	0-0	.000	0-0	.000	1	1	2	3.2	3	2	1	0	2	0	2.9	
CALIFORNIA	1/4/16	12	1-3	.333	0-0	.000	0-0	.000	1	1	2	3.1	2	0	0	0	0	2	2.9	
at Washington State	1/8/16	20	4-6	.667	0-0	.000	3-3	1.000	2	1	3	3.1	1	0	2	0	0	11	3.4	
at Washington	01/10/16	14	0-1	.000	0-0	.000	0-0	.000	0	2	2	3.0	0	0	0	0	0	0	3.2	
UTAH	01/15/16	11	3-4	.750	0-0	.000	0-0	.000	2	2	4	3.1	3	1	2	0	0	6	3.4	
COLORADO	01/17/16	15	1-2	.500	0-0	.000	2-2	1.000	2	0	2	3.0	0	0	0	0	0	4	3.4	
at Arizona State	1/22/16	16	1-1	1.000	0-0	.000	0-0	.000	0	2	2	2.9	1	0	0	0	0	2	3.3	
ARIZONA STATE	1/24/16	15	0-1	.000	0-0	.000	1-2	.500	2	1	3	3.0	3	1	0	0	0	1	3.2	
at Oregon State	1/29/16	15	3-5	.600	0-0	.000	1-2	.500	0	2	2	2.9	1	0	1	0	2	7	3.4	
at Oregon	1/31/16	13	0-1	.000	0-0	.000	0-0	.000	0	2	2	2.9	4	0	0	0	1	0	3.2	
USC	02/05/16	16	2-2	1.000	0-0	.000	0-0	.000	2	1	3	2.9	2	1	2	0	0	4	3.3	
UCLA	02/07/16	16	0-2	.000	0-0	.000	1-2	.500	0	2	2	2.8	3	0	2	0	0	1	3.2	
Totals		5	356	28-61	.459	0-0	.000	20-30	.667	31	37	68	2.8	53	17	17	6	13	76	3.2

Games played: 24
Minutes/game: 14.8
Points/game: 3.2
FG Pct: 45.9
FT Pct: 66.7

Rebounds/game: 2.8
Assists/game: 0.7
Turnovers/game: 0.7
Assist/turnover ratio: 1.0
Steals/game: 0.5
Blocks/game: 0.3

Graham's Career Statistics

			Total		3-Point		F-Throws		Rebounds											Scoring	
Season	gp-gs	min/avg	fg-fga	pct	fg-fga	pct	ft-fa	pct	off	def	tot	avg	pf	fo	ast	to	blk	stl	pts	avg	
2015-16	24-5	356/14.8	28-61	.459	0-0	.000	20-30	.667	31	37	68	2.8	53	0	17	17	6	13	76	3.2	
TOTAL	24-5	356/14.8	28-61	.459	0-0	.000	20-30	.667	31	37	68	2.8	53	0	17	17	6	13	76	3.2	



Michal MILLER

Guard • 5-7 • Freshman • HS • Michigan City, Ind. (Michigan City HS)

#23

TOP PERFORMANCES

POINTS

Season: 16, vs. Howard (11/18/15)
Career: 16, vs. Howard (11/18/15)

REBOUNDS

Season: 3, vs. Gardner-Webb (12/21/15)
Career: 3, vs. Gardner-Webb (12/21/15)

ASSISTS

Season: 2, 2x, last vs. Oregon (01/31/16)
Career: 2, 2x, last vs. Oregon (01/31/16)

STEALS

Season: 2, 2x, last vs. La Tech (12/10/15)
Career: 2, 2x, last vs. La Tech (12/10/15)

BLOCKS

Season: 1, vs. George Mason (12/29/15)
Career: 1, vs. George Mason (12/29/15)

FIELD GOALS MADE

Season: 5, vs. Howard (11/18/15)
Career: 5, vs. Howard (11/18/15)

3-PT FIELD GOALS MADE

Season: 4, vs. Howard (11/18/15)
Career: 4, vs. Howard (11/18/15)

FREE THROWS MADE

Season: 2, vs. Howard (11/18/15)
Career: 2, vs. Howard (11/18/15)

MINUTES PLAYED

Season: 22, vs. Oregon State (1/29/16)
Career: 22, vs. Oregon State (1/29/16)

Miller's 2015-16 Game-by-Game Statistics

Opponent	Date	gs	min	Total		3-Pointers		Free throws		Rebounds				pf	a	t/o	blk	stl	pts	avg
				fg-fga	pct	3fg-fga	pct	ft-fga	pct	off	def	tot	avg							
at Toledo	11/14/15	5	1-4	.250	1-2	.500	0-0	.000	1	0	1	1.0	0	0	0	0	0	0	3	3.0
HOWW	11/18/15	14	5-7	.714	4-6	.667	2-4	.500	0	2	2	1.5	2	0	3	0	2	16	9.5	
at San Diego	11/21/15	6	0-1	.000	0-1	.000	0-0	.000	0	0	0	1.0	0	0	0	0	1	0	6.3	
UNIVERSITY OF KANSAS	11/23/15	5	1-1	1.000	1-1	1.000	0-0	.000	1	0	1	1.0	1	0	0	0	0	3	5.5	
at North Texas	11/27/15	1	1-1	1.000	0-0	.000	0-0	.000	0	0	0	0.8	0	0	1	0	0	2	4.8	
NEW MEXICO STATE	12/2/15	3	0-1	.000	0-0	.000	0-0	.000	0	0	0	0.7	0	0	1	0	0	0	4.0	
PACIFIC	12/05/15	10	1-3	.333	1-3	.333	1-2	.500	1	0	1	0.7	4	1	2	0	0	4	4.0	
LOUISIANA TECH	12/10/15	13	3-7	.429	1-4	.250	0-0	.000	0	2	2	0.9	3	1	0	0	2	7	4.4	
vs SMU	DEC. 19	6	1-3	.333	1-3	.333	0-0	.000	1	1	2	1.0	0	0	0	0	0	3	4.2	
vs Florida Gulf Coast Eagle	DEC. 20	6	1-4	.250	1-2	.500	0-0	.000	1	1	2	1.1	0	1	0	0	0	3	4.1	
vs GARDNE-1	DEC. 21	12	3-4	.750	0-0	.000	1-1	1.000	0	3	3	1.3	0	2	2	0	0	7	4.4	
GEORGE MASON	12/29/15	6	0-5	.000	0-2	.000	0-0	.000	0	1	1	1.3	2	1	0	1	1	0	4.0	
STANFORD	1/2/16	6	1-4	.250	0-0	.000	0-0	.000	1	0	1	1.2	1	0	0	0	1	2	3.8	
CALIFORNIA	1/4/16	2	1-1	1.000	1-1	1.000	0-0	.000	0	0	0	1.1	0	0	1	0	0	3	3.8	
at Washington State	1/8/16	9	0-1	.000	0-0	.000	2-4	.500	0	0	0	1.1	1	1	0	0	1	2	3.7	
at Washington	01/10/16	2	0-0	.000	0-0	.000	0-0	.000	0	0	0	1.0	0	0	0	0	0	0	3.4	
UTAH	01/15/16	11	0-4	.000	0-3	.000	1-2	.500	0	1	1	1.0	1	1	0	0	0	1	3.3	
COLORADO	01/17/16	8	0-0	.000	0-0	.000	0-0	.000	0	1	1	1.0	1	0	0	0	0	0	3.1	
at Arizona State	1/22/16	11	1-2	.500	0-0	.000	0-0	.000	1	0	1	1.0	0	0	0	0	1	2	3.1	
ARIZONA STATE	1/24/16	12	1-2	.500	0-0	.000	0-0	.000	0	0	0	1.0	2	1	0	0	0	2	3.0	
at Oregon State	1/29/16	22	1-5	.200	0-1	.000	1-2	.500	0	2	2	1.0	1	1	1	0	0	3	3.0	
at Oregon	1/31/16	18	2-7	.286	1-3	.333	0-0	.000	0	1	1	1.0	3	2	0	0	0	5	3.1	
USC	02/05/16	12	3-6	.500	0-2	.000	2-2	1.000	1	0	1	1.0	2	1	3	0	0	8	3.3	
UCLA	02/07/16	11	1-6	.167	0-3	.000	0-0	.000	1	0	1	1.0	0	0	3	0	1	2	3.3	
Totals		0	211	28-79	.354	12-37	.324	10-17	.588	9	15	24	1.0	24	13	17	1	10	78	3.3

Games played: 24
Minutes/game: 8.8
Points/game: 3.3
FG Pct: 35.4
3FG Pct: 32.4
FT Pct: 58.8

Rebounds/game: 1.0
Assists/game: 0.5
Turnovers/game: 0.7
Assist/turnover ratio: 0.8
Steals/game: 0.4
Blocks/game: 0.0

Miller's Career Statistics

			Total		3-Point		F-Throws		Rebounds											Scoring	
Season	gp-gs	min/avg	fg-fga	pct	fg-fga	pct	ft-fga	pct	off	def	tot	avg	pf	fo	ast	to	blk	stl	pts	avg	
2015-16	24-0	211/8.8	28-79	.354	12-37	.324	10-17	.588	9	15	24	1.0	24	0	13	17	1	10	78	3.3	
TOTAL	24-0	211/8.8	28-79	.354	12-37	.324	10-17	.588	9	15	24	1.0	24	0	13	17	1	10	78	3.3	



LaBrittney JONES

Forward • 6-1 • Junior • 2L • Cedar Hill, Texas (Cedar Hill HS)

#24

TOP PERFORMANCES

POINTS

Season: 22, vs. Colorado (01/17/15)
Career: 30, vs. Oregon (01/25/15)

REBOUNDS

Season: 10, 2x, last vs. USC (02/05/16)
Career: 15, vs. Texas Tech (12/15/13)

ASSISTS

Season: 3, vs. Cal (01/04/16)
Career: 3, vs. Cal (01/04/16)

STEALS

Season: 3, 3x, last vs. Colorado (01/17/16)
Career: 3, 5x, last vs. Colorado (01/17/16)

BLOCKS

Season: 3, 2x, last vs. George Mason (12/29/15)
Career: 6, at Colorado (02/01/15)

FIELD GOALS MADE

Season: 9, vs. Colorado (01/17/16)
Career: 10, vs. Oregon (01/25/15)

3-PT FIELD GOALS MADE

Season: 2, 2x, last vs. Arizona State (01/22/16)
Career: 2, 2x, last vs. Arizona State (01/22/16)

FREE THROWS MADE

Season: 8, vs. George Mason (12/29/15)
Career: 10, vs. Oregon (01/25/15)

MINUTES PLAYED

Season: 34, vs. Utah (01/15/16)
Career: 36, vs. Iona (11/08/13)

Jones' 2015-16 Game-by-Game Statistics

Opponent	Date	gs	min	Total		3-Pointers		Free throws		Rebounds				pf	a	t/o	blk	stl	pts	avg
				fg-fga	pct	3fg-fga	pct	ft-fa	pct	off	def	tot	avg							
vs SMU	DEC. 19	23		1-6	.167	0-0	.000	5-6	.833	2	5	7	7.0	3	1	5	2	0	7	7.0
vs Florida Gulf Coast Eagle	DEC. 20	15		3-7	.429	0-1	.000	1-2	.500	3	2	5	6.0	1	0	0	3	0	7	7.0
vs GARDNE~1	DEC. 21	25		5-10	.500	0-0	.000	4-6	.667	1	1	2	4.7	2	2	2	1	3	14	9.3
GEORGE MASON	12/29/15	*	27	4-8	.500	0-0	.000	8-11	.727	2	3	5	4.8	2	1	1	3	2	16	11.0
STANFORD	1/2/16	*	30	3-13	.231	0-2	.000	5-8	.625	2	3	5	4.8	1	1	4	1	2	11	11.0
CALIFORNIA	1/4/16	*	33	2-10	.200	0-0	.000	5-5	1.000	4	6	10	5.7	2	3	2	1	2	9	10.7
at Washington State	1/8/16	*	31	3-7	.429	0-0	.000	3-4	.750	2	4	6	5.7	2	2	2	1	0	9	10.4
at Washington	01/10/16	*	23	2-9	.222	0-0	.000	3-4	.750	1	3	4	5.5	2	0	1	1	1	7	10.0
UTAH	01/15/16	*	34	8-19	.421	2-3	.667	1-3	.333	1	6	7	5.7	4	1	0	2	3	19	11.0
COLORADO	01/17/16	*	28	9-18	.500	0-0	.000	4-6	.667	2	7	9	6.0	0	0	0	1	3	22	12.1
at Arizona State	1/22/16	*	30	3-8	.375	2-2	1.000	0-1	.000	2	2	4	5.8	4	1	3	0	0	8	11.7
ARIZONA STATE	1/24/16	*	31	4-10	.400	0-2	.000	2-2	1.000	1	5	6	5.8	2	2	1	0	2	10	11.6
at Oregon State	1/29/16	*	28	3-8	.375	1-3	.333	3-5	.600	0	1	1	5.5	2	1	3	1	1	10	11.5
at Oregon	1/31/16	*	20	5-13	.385	2-3	.667	2-2	1.000	2	1	3	5.3	4	0	1	0	0	14	11.6
USC	02/05/16	*	32	7-15	.467	0-4	.000	3-5	.600	2	8	10	5.6	4	2	2	1	0	17	12.0
UCLA	02/07/16	*	34	5-16	.313	0-3	.000	2-3	.667	2	2	4	5.5	3	1	2	0	1	12	12.0
Totals		13	444	67-177	.379	7-23	.304	51-73	.699	29	59	88	5.5	38	18	29	18	20	192	12.0

Games played: 16
Minutes/game: 27.8
Points/game: 12.0
FG Pct: 37.9
3FG Pct: 30.4
FT Pct: 69.9

Rebounds/game: 5.5
Assists/game: 1.1
Turnovers/game: 1.8
Assist/turnover ratio: 0.6
Steals/game: 1.3
Blocks/game: 1.1

Jones' Career Statistics

Season	gp-gs	min/avg	Total		3-Point		F-Throws		Rebounds				pf	fo	ast	to	blk	stl	Scoring	
			fg-fga	pct	fg-fga	pct	ft-fa	pct	off	def	tot	avg							pts	avg
2013-14	30-30	748/24.9	84-182	.462	0-1	.000	55-75	.733	47	126	173	5.8	76	1	18	42	32	23	223	7.4
2014-15	30-17	704/23.5	101-236	.428	1-4	.250	68-89	.764	66	104	170	5.7	66	0	12	39	44	13	271	9.0
2015-16	16-13	444/27.8	67-177	.379	7-23	.304	51-73	.699	29	59	88	5.5	38	0	18	29	18	20	192	12.0
TOTAL	76-60	1896/24.9	252-595	.424	8-28	.286	174-237	.734	142	289	431	5.7	180	1	48	110	94	56	686	9.0



Dejza JAMES

Forward • 6-1 • Junior • 1L • Elk Grove, Calif. (Elk Grove HS)

#31

TOP PERFORMANCES

POINTS

Season: 16, vs. La Tech (12/10/15)
Career: 13, vs. La Tech (12/10/15)

REBOUNDS

Season: 13, vs. New Mexico State (12/02/15)
Career: 13, vs. New Mexico State (12/02/15)

ASSISTS

Season: 5, vs. La Tech (12/10/15)
Career: 5, vs. La Tech (12/10/15)

STEALS

Season: 1, 7x, last vs. Cal (01/04/16)
Career: 2, 3x, last vs. Cal (02/06/15)

BLOCKS

Season: 2, vs. New Mexico State (12/02/15)
Career: 2, vs. New Mexico State (12/02/15)

FIELD GOALS MADE

Season: 8, vs. La Tech (12/10/15)
Career: 8, vs. La Tech (12/10/15)

3-PT FIELD GOALS MADE

Season: 1, vs. Kansas (11/23/15)
Career: 1, vs. Kansas (11/23/15)

FREE THROWS MADE

Season: 3, vs. Kansas (11/23/15)
Career: 3, vs. Kansas (11/23/15)

MINUTES PLAYED

Season: 24, 2x, last at Washington (1/10/16)
Career: 29, vs. Michigan (11/09/13)

James' 2015-16 Game-by-Game Statistics

				Total		3-Pointers		Free throws		Rebounds											
Opponent	Date	gs	min	fg-fga	pct	3fg-fga	pct	ft-fa	pct	off	def	tot	avg	pf	a	t/o	blk	stl	pts	avg	
at San Diego	11/21/15	21		4-10	.400	0-0	.000	0-2	.000	2	8	10	10.0	4	0	3	0	1	8	8.0	
UNIVERSITY OF KANSAS	11/23/15	17		1-6	.167	1-1	1.000	3-6	.500	2	3	5	7.5	1	2	1	0	0	6	7.0	
at North Texas	11/27/15	17		0-2	.000	0-0	.000	0-0	.000	0	1	1	5.3	3	1	3	0	1	0	4.7	
NEW MEXICO STATE	12/2/15	21		3-8	.375	0-0	.000	1-3	.333	2	11	13	7.3	1	0	4	2	1	7	5.3	
LOUISIANA TECH	12/10/15	24		8-12	.667	0-1	.000	0-1	.000	6	3	9	7.6	1	5	1	1	0	16	7.4	
vs SMU	DEC. 19	23		2-7	.286	0-0	.000	0-0	.000	2	4	6	7.3	4	1	3	1	0	4	6.8	
vs Florida Gulf Coast Eagle	DEC. 20	8		0-1	.000	0-0	.000	0-0	.000	0	2	2	6.6	1	0	2	0	1	0	5.9	
vs GARDNE~1	DEC. 21	*	16		0-2	.000	0-0	.000	1-2	.500	2	3	5	6.4	3	1	3	0	0	5.3	
GEORGE MASON	12/29/15	13		0-4	.000	0-0	.000	0-0	.000	3	4	7	6.4	0	0	3	1	1	0	4.7	
STANFORD	1/2/16	18		2-6	.333	0-0	.000	2-4	.500	3	2	5	6.3	3	0	0	0	1	6	4.8	
CALIFORNIA	1/4/16	23		3-5	.600	0-0	.000	1-1	1.000	3	5	8	6.5	2	0	1	0	1	7	5.0	
at Washington State	1/8/16	10		2-3	.667	0-1	.000	0-0	.000	1	2	3	6.2	2	0	0	0	0	4	4.9	
at Washington	01/10/16	24		5-14	.357	0-0	.000	0-2	.000	3	3	6	6.2	1	1	2	1	0	10	5.3	
Totals		1	235	30-80	.375	1-3	.333	8-21	.381	29	51	80	6.2	26	11	26	6	7	69	5.3	

Games played: 13
Minutes/game: 18.1
Points/game: 5.3
FG Pct: 37.5
3FG Pct: 33.3
FT Pct: 38.1

Rebounds/game: 6.2
Assists/game: 0.8
Turnovers/game: 2.0
Assist/turnover ratio: 0.4
Steals/game: 0.5
Blocks/game: 0.5

James' Career Statistics

			Total		3-Point		F-Throws		Rebounds											Scoring	
Season	gp-gs	min/avg	fg-fga	pct	fg-fga	pct	ft-fa	pct	off	def	tot	avg	pf	fo	ast	to	blk	stl	pts	avg	
2013-14	10-0	129/12.9	18-33	.545	0-0	.000	1-3	.333	8	16	24	2.4	12	0	2	6	2	2	37	3.7	
2014-15	30-0	395/13.2	48-124	.387	0-0	.000	13-27	.481	37	51	88	2.9	40	0	6	13	4	8	109	3.6	
2015-16	13-1	235/18.1	30-80	.375	1-3	.333	8-21	.381	29	51	80	6.2	26	0	11	26	6	7	69	5.3	
TOTAL	53-1	759/14.3	96-237	.405	1-3	.333	22-51	.431	74	118	192	3.6	78	0	19	45	12	17	215	4.1	



JaLea BENNETT

Guard • 6-0 • Sophomore • 1L • Grand Prairie, Texas (Mansfield Timberview)

#33

TOP PERFORMANCES

POINTS

Season: 18, vs. Howard (11/18/15)

Career: 18, vs. Howard (11/18/15)

REBOUNDS

Season: 6, vs. Arizona State (01/22/16)

Career: 6, 4x, last vs. Arizona State (01/22/16)

ASSISTS

Season: 3, vs. George Mason (12/29/15)

Career: 4, vs. Utah (03/01/15)

STEALS

Season: 3, vs. New Mexico State (12/02/15)

Career: 3, vs. New Mexico State (12/02/15)

BLOCKS

Season: 1, 12x, last vs. USC (02/05/16)

Career: 3, vs. Arizona State (01/08/15)

FIELD GOALS MADE

Season: 7, vs. Howard (11/18/15)

Career: 7, 2x, last vs. Howard (11/18/15)

3-PT FIELD GOALS MADE

Season: 3, at North Texas (11/27/15)

Career: 3, at North Texas (11/27/15)

FREE THROWS MADE

Season: 4, vs. Oregon State (1/29/16)

Career: 5, at Texas Tech (11/21/14)

MINUTES PLAYED

Season: 31, vs. La Tech (12/10/15)

Career: 32, vs. Utah (03/01/15)

Bennett's 2014-15 Game-by-Game Statistics

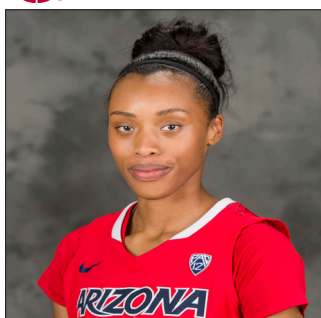
				Total		3-Pointers		Free throws		Rebounds													
Opponent	Date	qs	min	fg-fga	pct	3fg-fga	pct	ft-fa	pct	off	def	tot	avg	pf	a	t/o	blk	stl	pts	avg			
at Toledo	11/14/15	*	15	1-4	.250	0-1	.000	1-2	.500	0	1	1	1.0	3	0	0	1	1	3	3.0			
HOWW	11/18/15	*	21	7-12	.583	2-2	1.000	2-4	.500	3	1	4	2.5	3	1	1	0	1	18	10.5			
at San Diego	11/21/15	*	22	0-3	.000	0-0	.000	0-0	.000	0	0	0	1.7	2	2	0	1	0	0	7.0			
UNIVERSITY OF KANSAS	11/23/15	*	23	4-13	.308	1-2	.500	2-5	.400	2	3	5	2.5	2	0	1	0	0	11	8.0			
at North Texas	11/27/15	*	28	6-9	.667	3-3	1.000	2-3	.667	0	2	2	2.4	4	0	2	0	2	17	9.8			
NEW MEXICO STATE	12/2/15	*	20	2-5	.400	0-2	.000	3-4	.750	0	1	1	2.2	2	1	2	1	3	7	9.3			
PACIFIC	12/05/15	*	21	2-5	.400	0-0	.000	0-0	.000	0	1	1	2.0	3	1	0	0	1	4	8.6			
LOUISIANA TECH	12/10/15	*	31	6-14	.429	1-1	1.000	1-1	1.000	1	2	3	2.1	3	2	4	0	0	14	9.3			
vs SMU	DEC. 19	*	14	0-2	.000	0-1	.000	1-2	.500	0	1	1	2.0	4	0	1	1	0	1	8.3			
vs Florida Gulf Coast Eagle	DEC. 20	*	21	2-4	.500	0-0	.000	0-0	.000	2	2	4	2.2	0	1	1	1	0	4	7.9			
vs GARDNE~1	DEC. 21	*	6	1-2	.500	0-0	.000	0-0	.000	1	2	3	2.3	0	0	0	1	0	2	7.4			
GEORGE MASON	12/29/15	*	18	3-9	.333	0-2	.000	1-2	.500	0	0	0	2.1	2	3	1	0	1	7	7.3			
STANFORD	1/2/16	*	17	0-2	.000	0-0	.000	0-2	.000	1	2	3	2.2	2	0	1	0	1	0	6.8			
CALIFORNIA	1/4/16	*	26	2-8	.250	1-1	1.000	0-0	.000	1	4	5	2.4	1	2	3	1	1	5	6.6			
at Washington State	1/8/16	*	21	3-9	.333	0-3	.000	0-0	.000	2	1	3	2.4	1	2	3	0	1	6	6.6			
at Washington	01/10/16	*	26	3-6	.500	0-1	.000	1-3	.333	0	2	2	2.4	2	2	2	1	0	7	6.6			
UTAH	01/15/16	*	24	1-6	.167	0-1	.000	0-0	.000	0	2	2	2.4	2	1	1	1	1	2	6.4			
COLORADO	01/17/16	*	21	2-5	.400	0-0	.000	0-0	.000	0	2	2	2.3	4	2	3	0	0	4	6.2			
at Arizona State	1/22/16	*	29	1-3	.333	0-0	.000	0-0	.000	2	4	6	2.5	2	0	4	0	1	2	6.0			
ARIZONA STATE	1/24/16	*	22	2-3	.667	0-0	.000	0-0	.000	0	1	1	2.5	4	0	2	1	1	4	5.9			
at Oregon State	1/29/16	*	23	0-7	.000	0-0	.000	4-4	1.000	1	1	2	2.4	2	1	0	0	2	4	5.8			
at Oregon	1/31/16	*	24	1-5	.200	0-2	.000	0-0	.000	1	2	3	2.5	1	1	1	1	0	2	5.6			
USC	02/05/16	*	18	3-8	.375	0-1	.000	1-3	.333	2	1	3	2.5	5	2	3	1	0	7	5.7			
UCLA	02/07/16	*	19	1-4	.250	0-0	.000	0-0	.000	1	0	1	2.4	5	2	2	0	1	2	5.5			
Totals		24	510	53-148	.358	8-23	.348	19-35	.543	20	38	58	2.4	59	26	38	12	18	133	5.5			

Games played: 24
Minutes/game: 21.3
Points/game: 5.5
FG Pct: 35.8
3FG Pct: 34.8
FT Pct: 54.3

Rebounds/game: 2.4
Assists/game: 1.1
Turnovers/game: 1.6
Assist/turnover ratio: 0.7
Steals/game: 0.8
Blocks/game: 0.5

Bennett's Career Statistics

			Total		3-Point		F-Throws		Rebounds											Scoring	
Season	gp-gs	min/avg	fg-fga	pct	fg-fga	pct	ft-fa	pct	off	def	tot	avg	pf	fo	ast	to	blk	stl	pts	avg	
2014-15	30-14	524/17.5	48-125	.384	2-15	.133	37-55	.673	37	33	70	2.3	62	1	36	43	7	15	135	4.5	
2015-16	24-24	510/21.3	53-148	.358	8-23	.348	19-35	.543	20	38	58	2.4	59	2	26	38	12	18	133	5.5	
TOTAL	54-38	1034/19.1	101-273	.370	10-38	.263	56-90	.622	57	71	128	2.4	121	3	62	81	19	33	268	5.0	



A'Shanti COLEMAN

Forward • 6-2 • Freshman • HS • San Francisco, Calif. (Sacred Heart Cathedral)

#42

TOP PERFORMANCES

POINTS

Season: 10, vs. Florida Gulf Coast (12/20/15)
Career: 10, vs. Florida Gulf Coast (12/20/15)

REBOUNDS

Season: 7, vs. Pacific (12/05/15)
Career: 7, vs. Pacific (12/05/15)

ASSISTS

Season: 3, vs. George Mason (12/29/15)
Career: 3, vs. George Mason (12/29/15)

STEALS

Season: 3, vs. Howard (11/18/15)
Career: 3, vs. Howard (11/18/15)

BLOCKS

Season: 4, 2x, last vs. Pacific (12/05/15)
Career: 4, 2x, last vs. Pacific (12/05/15)

FIELD GOALS MADE

Season: 5, vs. Florida Gulf Coast (12/20/15)
Career: 5, vs. Florida Gulf Coast (12/20/15)

3-PT FIELD GOALS MADE

Season:
Career:

FREE THROWS MADE

Season: 2, vs. Howard (11/18/15)
Career: 2, vs. Howard (11/18/15)

MINUTES PLAYED

Season: 28, vs. Howard (11/18/15)
Career: 28, vs. Howard (11/18/15)

Coleman's 2015-16 Game-by-Game Statistics

Opponent	Date	gs	min	Total		3-Pointers		Free throws		Rebounds				pf	a	t/o	blk	stl	pts	avg	
				fg-fga	pct	3fg-fga	pct	ft-fa	pct	off	def	tot	avg								
at Toledo	11/14/15	*	12	1-2	.500	0-0	.000	0-0	.000	0	0	0	0.0	2	1	0	1	0	2	2.0	
HOWW	11/18/15	*	28	3-6	.500	0-0	.000	2-2	1.000	1	4	5	2.5	3	0	1	0	3	8	5.0	
at San Diego	11/21/15	*	15	1-2	.500	0-0	.000	0-0	.000	0	1	1	2.0	2	0	0	1	0	2	4.0	
UNIVERSITY OF KANSAS	11/23/15	*	22	1-2	.500	0-0	.000	0-0	.000	1	2	3	2.3	2	0	1	4	1	2	3.5	
at North Texas	11/27/15	*	18	0-1	.000	0-0	.000	0-0	.000	0	2	2	2.2	0	0	0	1	0	0	2.8	
NEW MEXICO STATE	12/2/15	*	10	1-2	.500	0-0	.000	0-2	.000	0	2	2	2.2	3	0	1	0	0	2	2.7	
PACIFIC	12/05/15	*	25	4-9	.444	0-0	.000	1-2	.500	4	3	7	2.9	1	2	0	4	0	9	3.6	
LOUISIANA TECH	12/10/15	*	13	0-0	.000	0-0	.000	0-0	.000	0	1	1	2.6	2	0	1	0	0	0	3.1	
vs SMU	DEC. 19	*	9	1-4	.250	0-0	.000	0-0	.000	1	0	1	2.4	1	1	1	0	1	2	3.0	
vs Florida Gulf Coast Eagle	DEC. 20	*	18	5-5	1.000	0-0	.000	0-0	.000	0	2	2	2.4	2	1	4	0	0	10	3.7	
vs GARDNE~1	DEC. 21	*	15	2-5	.400	0-0	.000	0-0	.000	3	1	4	2.5	2	0	2	1	1	4	3.7	
GEORGE MASON	12/29/15		18	0-6	.000	0-0	.000	0-0	.000	3	0	3	2.6	1	3	2	1	1	0	3.4	
STANFORD	1/2/16		12	1-2	.500	0-0	.000	0-0	.000	1	2	3	2.6	1	0	0	0	0	2	3.3	
CALIFORNIA	1/4/16		13	1-4	.250	0-0	.000	0-0	.000	1	2	3	2.6	1	0	0	0	1	2	3.2	
at Washington State	1/8/16		5	0-0	.000	0-0	.000	0-0	.000	0	0	0	2.5	1	0	2	0	1	0	3.0	
at Washington	01/10/16		3	0-0	.000	0-0	.000	0-0	.000	0	0	0	2.3	0	0	1	0	0	0	2.8	
UTAH	01/15/16		3	0-0	.000	0-0	.000	0-0	.000	0	0	0	2.2	0	0	0	0	0	0	2.6	
COLORADO	01/17/16		8	1-2	.500	0-0	.000	0-0	.000	0	1	1	2.1	0	1	1	1	1	2	2.6	
at Arizona State	1/22/16		9	0-1	.000	0-0	.000	0-0	.000	0	1	1	2.1	3	0	1	0	0	0	2.5	
ARIZONA STATE	1/24/16		9	1-3	.333	0-0	.000	0-0	.000	0	2	2	2.1	2	0	1	1	0	2	2.5	
at Oregon State	1/29/16		15	2-5	.400	0-0	.000	0-0	.000	0	1	1	2.0	1	0	0	0	0	4	2.5	
at Oregon	1/31/16		5	1-1	1.000	0-0	.000	0-0	.000	0	0	0	1.9	0	0	0	0	0	2	2.5	
USC	02/05/16		1	0-2	.000	0-0	.000	0-0	.000	0	0	0	1.8	0	0	0	0	0	0	2.4	
UCLA	02/07/16		2	0-0	.000	0-0	.000	0-0	.000	0	0	0	1.8	0	0	0	0	0	0	2.3	
Totals			11	288	26-64	.406	0-0	.000	3-6	.500	15	27	42	1.8	30	9	19	14	11	55	2.3

Games played: 24
Minutes/game: 12.0
Points/game: 2.3
FG Pct: 40.6
FT Pct: 50.0

Rebounds/game: 1.8
Assists/game: 0.4
Turnovers/game: 0.8
Assist/turnover ratio: 0.5
Steals/game: 0.5
Blocks/game: 0.6

Coleman's Career Statistics

			Total		3-Point		F-Throws		Rebounds											Scoring	
Season	gp-gs	min/avg	fg-fga	pct	fg-fga	pct	ft-fa	pct	off	def	tot	avg	pf	fo	ast	to	blk	stl	pts	avg	
2015-16	24-11	288/12.0	26-64	.406	0-0	.000	3-6	.500	15	27	42	1.8	30	0	9	19	14	11	55	2.3	
TOTAL	24-11	288/12.0	26-64	.406	0-0	.000	3-6	.500	15	27	42	1.8	30	0	9	19	14	11	55	2.3	



2015-16 Arizona Women's Basketball
Arizona Combined Team Statistics (as of Feb 07, 2016)
All games

RECORD:	OVERALL	HOME	AWAY	NEUTRAL
ALL GAMES	11-13	8-5	2-6	1-2
CONFERENCE	2-10	2-5	0-5	0-0
NON-CONFERENCE	9-3	6-0	2-1	1-2

#	Player	gp-gs	min	avg	Total		3-Point		F-Throw		Rebounds				pf	dq	a	to	blk	stl	pts	avg
					fg-fga	fg%	3fg-fga	3fg%	ft-fa	ft%	off	def	tot	avg								
24	JONES, LaBrittney	16-13	444	27.8	67-177	.379	7-23	.304	51-73	.699	29	59	88	5.5	38	0	18	29	18	20	192	12.0
14	WASHINGTON, Malen	24-9	586	24.4	96-258	.372	30-102	.294	36-49	.735	9	36	45	1.9	50	1	68	67	1	20	258	10.8
03	GRIFFEY, Taryn	16-14	319	19.9	53-124	.427	29-67	.433	9-18	.500	12	36	48	3.0	22	0	22	29	4	12	144	9.0
00	WORKMAN, Breanna	20-18	501	25.1	46-96	.479	0-3	.000	34-52	.654	23	67	90	4.5	47	1	26	54	1	16	126	6.3
33	BENNETT, JaLea	24-24	510	21.3	53-148	.358	8-23	.348	19-35	.543	20	38	58	2.4	59	2	26	38	12	18	133	5.5
31	JAMES, Dejza	13-1	235	18.1	30-80	.375	1-3	.333	8-21	.381	29	51	80	6.2	26	0	11	26	6	7	69	5.3
15	CANNON, Keyahndra	24-24	541	22.5	39-109	.358	2-17	.118	20-22	.909	17	45	62	2.6	33	0	28	41	3	17	100	4.2
10	EVANS, Lauren	24-0	486	20.3	34-80	.425	0-1	.000	13-19	.684	26	47	73	3.0	44	0	26	29	8	21	81	3.4
23	MILLER, Michal	24-0	211	8.8	28-79	.354	12-37	.324	10-17	.588	9	15	24	1.0	24	0	13	17	1	10	78	3.3
21	GRAHAM, Destiny	24-5	356	14.8	28-61	.459	0-0	.000	20-30	.667	31	37	68	2.8	53	0	17	17	6	13	76	3.2
42	COLEMAN, A'Shanti	24-11	288	12.0	26-64	.406	0-0	.000	3-6	.500	15	27	42	1.8	30	0	9	19	14	11	55	2.3
20	BELL, Farrin	24-1	342	14.3	16-51	.314	0-1	.000	8-20	.400	13	38	51	2.1	23	0	28	38	3	14	40	1.7
11	HARRIS, Cherice	3-0	6	2.0	0-1	.000	0-0	.000	0-0	.000	0	0	0	0.0	0	0	1	0	0	0	0	0.0
Team											65	76	141					13				
Total.....		24	4825		516-1328	.389	89-277	.321	231-362	.638	298	572	870	36.2	449	4	293	417	77	179	1352	56.3
Opponents.....		24	4825		505-1284	.393	120-397	.302	297-434	.684	279	570	849	35.4	410	-	268	409	89	197	1427	59.5

TEAM STATISTICS	ARIZ	OPP	Date	Opponent	Score	Att.
SCORING	1352	1427	11/14/15	at Toledo	w 62-59	3713
Points per game	56.3	59.5	11/18/15	HOWW	w 65-28	778
Scoring margin	-3.1	-	11/21/15	at San Diego	L 54-59	714
FIELD GOALS-ATT	516-1328	505-1284	11/23/15	UNIVERSITY OF KANSAS	w 67-52	6652
Field goal pct	.389	.393	11/27/15	at North Texas	w 51-44	961
3 POINT FG-ATT	89-277	120-397	12/2/15	NEW MEXICO STATE	w 68-64	741
3-point FG pct	.321	.302	12/05/15	PACIFIC	w 69-56	765
3-pt FG made per game	3.7	5.0	12/10/15	LOUISIANA TECH	w 77-67	827
FREE THROWS-ATT	231-362	297-434	N Dec. 19	vs SMU	L 46-58	0
Free throw pct	.638	.684	N Dec. 20	vs Florida Gulf Coast Eagles	L 55-57	0
F-Throws made per game	9.6	12.4	N Dec. 21	vs GARDNE~1	w 79-60	0
REBOUNDS	870	849	12/29/15	GEORGE MASON	wot 68-60	990
Rebounds per game	36.2	35.4	* 1/2/16	STANFORD	L 34-59	1491
Rebounding margin	+0.9	-	* 1/4/16	CALIFORNIA	w 57-52	728
ASSISTS	293	268	* 1/8/16	at Washington State	L 46-67	756
Assists per game	12.2	11.2	* 01/10/16	at Washington	L 47-63	2913
TURNOVERS	417	409	* 01/15/16	UTAH	L 55-60	1022
Turnovers per game	17.4	17.0	* 01/17/16	COLORADO	w 63-52	967
Turnover margin	-0.3	-	* 1/22/16	at Arizona State	L 49-61	3455
Assist/turnover ratio	0.7	0.7	* 1/24/16	ARIZONA STATE	L 47-62	1483
STEALS	179	197	* 1/29/16	at Oregon State	L 43-71	3402
Steals per game	7.5	8.2	* 1/31/16	at Oregon	L 54-76	2301
BLOCKS	77	89	* 02/05/16	USC	L 57-67	1030
Blocks per game	3.2	3.7	* 02/07/16	UCLA	L 39-73	845
ATTENDANCE	18319	18215				
Home games-Avg/Game	13-1409	8-2277				
Neutral site-Avg/Game	-	3-0				

* - Conference game

Score by Periods	1st	2nd	3rd	4th	OT	Totals
Arizona	328	295	348	366	15	1352
Opponents	399	326	333	362	7	1427



2015-16 Arizona Women's Basketball
Arizona Team Game-by-Game (as of Feb 07, 2016)
All games

TEAM STATISTICS

Opponent	Date	Score		Total		3-Pointers		Free throws		Rebounds				pf	a	t/o	blk	stl	pts	avg
				fg-fga	pct	3fg-fga	pct	ft-fa	pct	off	def	tot	avg							
at Toledo	11/14/15	62-59	W	24-56	.429	9-18	.500	5-13	.385	14	21	35	35.0	16	17	16	5	11	62	62.0
HOWW	11/18/15	65-28	W	23-52	.442	9-15	.600	10-17	.588	13	25	38	36.5	24	17	19	2	15	65	63.5
at San Diego	11/21/15	54-59	L	23-56	.411	3-8	.375	5-9	.556	12	25	37	36.7	25	12	16	5	3	54	60.3
UNIVERSITY OF KANSAS	11/23/15	67-52	W	23-56	.411	7-12	.583	14-26	.538	15	30	45	38.8	22	9	14	5	5	67	62.0
at North Texas	11/27/15	51-44	W	18-40	.450	3-7	.429	12-20	.600	5	21	26	36.2	18	8	24	1	14	51	59.8
NEW MEXICO STATE	12/2/15	68-64	W	25-54	.463	4-13	.308	14-25	.560	11	28	39	36.7	18	11	22	3	12	68	61.2
PACIFIC	12/05/15	69-56	W	25-54	.463	6-13	.462	13-20	.650	9	25	34	36.3	20	19	14	6	9	69	62.3
LOUISIANA TECH	12/10/15	77-67	W	34-69	.493	3-12	.250	6-9	.667	17	22	39	36.6	23	22	16	2	7	77	64.1
vs SMU	DEC. 19	46-58	L	15-52	.288	4-13	.308	12-17	.706	14	28	42	37.2	28	9	18	8	5	46	62.1
vs Florida Gulf Coast Eagle	DEC. 20	55-57	L	22-47	.468	1-8	.125	10-13	.769	13	30	43	37.8	18	14	21	5	6	55	61.4
vs GARDNE~1	DEC. 21	79-60	W	31-66	.470	8-16	.500	9-13	.692	19	25	44	38.4	20	15	17	3	12	79	63.0
GEORGE MASON	12/29/15	68-60	Wot	23-68	.338	5-18	.278	17-23	.739	19	26	45	38.9	17	17	17	9	14	68	63.4
STANFORD	1/2/16	34-59	L	11-53	.208	1-10	.100	11-19	.579	13	16	29	38.2	16	7	13	1	9	34	61.2
CALIFORNIA	1/4/16	57-52	W	20-64	.313	4-14	.286	13-14	.929	19	28	47	38.8	12	11	13	2	9	57	60.9
at Washington State	1/8/16	46-67	L	18-48	.375	1-8	.125	9-14	.643	13	21	34	38.5	13	12	24	1	4	46	59.9
at Washington	01/10/16	47-63	L	19-67	.284	5-17	.294	4-10	.400	13	27	40	38.6	16	10	14	3	5	47	59.1
UTAH	01/15/16	55-60	L	23-68	.338	4-15	.267	5-10	.500	10	23	33	38.2	16	15	12	4	8	55	58.8
COLORADO	01/17/16	63-52	W	23-49	.469	0-1	.000	17-24	.708	10	28	38	38.2	15	12	12	2	6	63	59.1
at Arizona State	1/22/16	49-61	L	20-40	.500	3-7	.429	6-9	.667	9	26	35	38.1	19	10	27	0	3	49	58.5
ARIZONA STATE	1/24/16	47-62	L	19-45	.422	1-5	.200	8-13	.615	5	14	19	37.1	22	10	14	3	6	47	58.0
at Oregon State	1/29/16	43-71	L	16-54	.296	1-5	.200	10-15	.667	9	23	32	36.9	12	8	11	2	6	43	57.2
at Oregon	1/31/16	54-76	L	22-51	.431	6-16	.375	4-4	1.000	8	14	22	36.2	18	10	17	2	3	54	57.1
USC	02/05/16	57-67	L	23-61	.377	0-9	.000	11-16	.688	16	29	45	36.6	20	14	21	3	1	57	57.1
UCLA	02/07/16	39-73	L	16-58	.276	1-17	.059	6-9	.667	12	17	29	36.2	21	4	25	0	6	39	56.3
Arizona		1352		516-1328	.389	89-277	.321	231-362	.638	298	572	870	36.2	449	293	417	77	179	1352	56.3
Opponents		1427		505-1284	.393	120-397	.302	297-434	.684	279	570	849	35.4	410	268	409	89	197	1427	59.5

Games played: 24

Points/game: 56.3

FG Pct: 38.9

3FG Pct: 32.1

FT Pct: 63.8

Rebounds/game: 36.2

Assists/game: 12.2

Turnovers/game: 17.4

Assist/turnover ratio: 0.7

Steals/game: 7.5

Blocks/game: 3.2



2015-16 Arizona Women's Basketball
Arizona Game-by-Game Highs (as of Feb 07, 2016)
All games

Opponent	Date	Score	Points	Rebounds	Assists	Steals	Blocked shots
at Toledo	11/14/15	62-59	18-GRIFFEY, Taryn	10-EVANS, Lauren	4-GRIFFEY, Taryn WASHINGTON, Mal	3-EVANS, Lauren GRAHAM, Destiny	1-BENNETT, JaLea EVANS, Lauren COLEMAN, A'Shanti GRAHAM, Destiny BELL, Farrin
HOWW	11/18/15	65-28	18-BENNETT, JaLea	5-COLEMAN, A'Shan BELL, Farrin WORKMAN, Breann	4-GRIFFEY, Taryn BELL, Farrin WASHINGTON, Mal	3-COLEMAN, A'Shan CANNON, Keyahndr	1-EVANS, Lauren GRIFFEY, Taryn
at San Diego	11/21/15	54-59	10-WORKMAN, Breann WASHINGTON, Mal	10-JAMES, Dejza	4-WASHINGTON, Mal	1-JAMES, Dejza WORKMAN, Breann MILLER, Michal	1-GRAHAM, Destiny COLEMAN, A'Shanti BENNETT, JaLea GRIFFEY, Taryn WORKMAN, Breann
UNIVERSITY OF KANSAS	11/23/15	67-52	17-GRIFFEY, Taryn	6-WORKMAN, Breann	4-BELL, Farrin	1-GRIFFEY, Taryn COLEMAN, A'Shanti EVANS, Lauren WORKMAN, Breann WASHINGTON, Mal	4-COLEMAN, A'Shan
at North Texas	11/27/15	51-44	17-BENNETT, JaLea	6-EVANS, Lauren	3-CANNON, Keyahnd	4-EVANS, Lauren	1-GRIFFEY, Taryn
NEW MEXICO STATE	12/2/15	68-64	17-WASHINGTON, Mal	13-JAMES, Dejza	3-WASHINGTON, Mal	4-WORKMAN, Breann	2-JAMES, Dejza
PACIFIC	12/05/15	69-56	21-WASHINGTON, Mal	7-COLEMAN, A'Shan	3-EVANS, Lauren WASHINGTON, Mal WORKMAN, Breann	3-BELL, Farrin WORKMAN, Breann	4-COLEMAN, A'Shan
LOUISIANA TECH	12/10/15	77-67	16-JAMES, Dejza	9-JAMES, Dejza	5-JAMES, Dejza	2-MILLER, Michal EVANS, Lauren	1-CANNON, Keyahnd JAMES, Dejza
vs SMU	DEC. 19	46-58	16-GRIFFEY, Taryn	7-JONES, LaBrittney	3-WASHINGTON, Mal	2-GRIFFEY, Taryn	2-JONES, LaBrittney
vs Florida Gulf Coast Eagles	DEC. 20	55-57	11-WASHINGTON, Mal	6-WORKMAN, Breann	4-WASHINGTON, Mal	3-CANNON, Keyahnd	3-JONES, LaBrittney
vs GARDNE~1	DEC. 21	79-60	29-GRIFFEY, Taryn	5-JAMES, Dejza GRAHAM, Destiny	5-WASHINGTON, Mal	3-CANNON, Keyahnd JONES, LaBrittney	1-JONES, LaBrittney COLEMAN, A'Shanti BENNETT, JaLea
GEORGE MASON	12/29/15	68-60	16-JONES, LaBrittney	7-JAMES, Dejza	3-COLEMAN, A'Shan CANNON, Keyahndr BENNETT, JaLea	3-CANNON, Keyahnd GRIFFEY, Taryn	3-EVANS, Lauren JONES, LaBrittney
STANFORD	1/2/16	34-59	11-JONES, LaBrittney	5-JAMES, Dejza JONES, LaBrittney	3-EVANS, Lauren	2-GRAHAM, Destiny JONES, LaBrittney	1-JONES, LaBrittney
CALIFORNIA	1/4/16	57-52	11-GRIFFEY, Taryn	10-JONES, LaBrittney	3-WASHINGTON, Mal JONES, LaBrittney	2-EVANS, Lauren JONES, LaBrittney	1-BENNETT, JaLea JONES, LaBrittney
at Washington State	1/8/16	46-67	11-GRAHAM, Destiny	6-JONES, LaBrittney	3-WASHINGTON, Mal	1-BELL, Farrin BENNETT, JaLea MILLER, Michal COLEMAN, A'Shanti	1-JONES, LaBrittney
at Washington	01/10/16	47-63	10-JAMES, Dejza	8-GRIFFEY, Taryn	3-WASHINGTON, Mal	1-GRIFFEY, Taryn BELL, Farrin WORKMAN, Breann JONES, LaBrittney WASHINGTON, Mal	1-JAMES, Dejza JONES, LaBrittney BENNETT, JaLea
UTAH	01/15/16	55-60	19-JONES, LaBrittney	7-JONES, LaBrittney	5-WASHINGTON, Mal	3-JONES, LaBrittney	2-JONES, LaBrittney
COLORADO	01/17/16	63-52	22-JONES, LaBrittney	9-JONES, LaBrittney	4-WASHINGTON, Mal	3-JONES, LaBrittney	1-COLEMAN, A'Shan JONES, LaBrittney
at Arizona State	1/22/16	49-61	14-WASHINGTON, Mal	7-WORKMAN, Breann	7-WASHINGTON, Mal	1-WORKMAN, Breann MILLER, Michal BENNETT, JaLea	None
ARIZONA STATE	1/24/16	47-62	17-WASHINGTON, Mal	6-JONES, LaBrittney	4-WASHINGTON, Mal	2-BELL, Farrin	1-COLEMAN, A'Shan

